

WOODHAVEN NEWS

OCTOBER '24 | VOL. 41 NO. 8



WHATS INSIDE:

Management Report
pg. 3

Recreation & Activities
pg. 12-15

Resource News
pg. 22-23

MESSAGE FROM THE BOARD



Hi, I am Diane Connelly, a member of your Board of Directors, and October is my month to communicate with all of you. I have been on the Board for two years now and am still learning. Our new "old" board was seated at the end of August. I say old because we have been together for two years now and some for much longer. Consistency can be a good thing, but it is disheartening to see the lack of interest in running for the Board. It is a big commitment, but well

worth it, knowing that we are doing our part to keep Woodhaven strong, financially secure, and the best campground around. The next election is in two years and there will be four seats up for re-election. The process begins in April 2026, get involved.

The budget process starts in early October and lasts for two days. This is when each department makes a presentation to the Board of what they will need for the next year. All this information is used to prepare a balanced budget which will be approved in November and next year's assessment will be approved in December. The Facilities Planning committee plays a large part in this process also, but I think it's our "numbers" guru, Jeff, who somehow gets the whole budget to balance! I used to attend Board meetings and thought the Board voted yes to every item that was requested. I never realized all these items had already been approved and included in the yearly budget, so the Board knew they were needed. At the monthly Board meeting, we approve the recommendations from the Public Safety Board of Review and the ESAC Board of Review. It may appear like we always just say yes, but what you probably don't

know is that we have already read over the entire transcript from the reviews. If there are any recommendations we don't agree with we discuss them in our executive sessions. We seldom make any changes because the review boards spend a lot of time making their recommendations. So now you know! This season has again gone by too quickly, but hope you have all had a chance to enjoy everything that was planned for us. I know all the departments work extremely hard to plan a fun-filled season and staff work hard to carry out all those plans. I would like to acknowledge one department in particular who really stepped up their game this year. The Nature Center had it's usual awesome programs including Farmers Market, Storybook Walk, The Journal Program, and free crafts for the kids, but this year they added a new program for the "adults" here at Woodhaven. Listed as "over 16" it is perfect for us seniors here during the week. This was a free craft event offered several times throughout the season and was very well attended. They also added several new events, the highlight I think was the "Touch a Truck with Sublette Fire Department."

Memorial Day through Labor Day there are weekly events planned but there are still a lot of fun things going on here at Woodhaven in the fall. You don't want to miss Fall Fest on Saturday, October 12 and Sunday, October 13th. Events include the Farmers Market at the Nature Center, the Great Pumpkin Hunt, the Food Fair, and of course the famous Haunted House. Trout Fishing opens on Saturday and the Open Market is on Sunday. On Saturday, October 26th, there will be the Kid's Halloween Party along with Trick or Treat and Trunk or Treat. Sunday is Joker's Jog 3K/5K. So don't close up yet, but do be sure to make plans to winterize your trailer before the cold sets in.

- 1 Message From The Board
- 3 Management Report
- 5 WLRI Residential
- 6 Board News & Meeting Schedules
- 8 New Property Owners | Section Reps.
- 9 Citations/Violations
- 11 ESAC Corner | Snow & Ice Control
- 12-15 Recreation & Activities
- 17 Package Policy
- 18-21 Department Highlights
- 22-23 Resource News
- 28 The Naturalist Corner
- 31 Woody True Value Bargains of the Month
- 32 Woodhaven Lakes Realty Lots for Sale

ASSOCIATION OFFICE/ESAC

Monday - Saturday | 8:30 a.m.-4:30 p.m.
 Sunday | 10 a.m.-2 p.m.

Starting 10/14 CLOSED on Sundays

WOODHAVEN LAKES REALTY

Monday - Saturday | 8:30 a.m.-4:30 p.m.
 Sunday | 10 a.m.-2 p.m.

Starting 10/14 CLOSED on Sundays

REC PLEX

Saturday | 10 a.m.-10 p.m.
 Sunday | 10 a.m.-4 p.m.

CLOSED after 10/13

NATURE CENTER

Saturday | 10 a.m.-3 p.m.
 Sunday | 10 a.m.-2 p.m.

Monday-Friday | CLOSED

CLOSED after 10/26

WOODY'S TRUE VALUE

Monday - Saturday | 8 a.m.-4 p.m.
 Sunday | 8 a.m.-3 p.m.

LAKEVIEW

Daily | 7 a.m.-Dusk

LAUNDROMAT

24 hours

CLOSED FOR THE SEASON:

Aquatics Facilities
 Family Center

PLEASE CHECK THE ONLINE FACILITY HOURS CALENDAR AT WWW.WOODHAVENASSOCIATION.COM/FACILITY-HOURS
 FOR MOST UP-TO-DATE SCHEDULES

CAMPSTOVE RESTAURANT

Friday-Sunday | 8 a.m.-11 a.m.

Monday-Thursday | CLOSED

CLOSED after 10/13

GENERAL STORE

Fri.10/4 & Sat. 10/5 | 8 a.m.-8 p.m.

Sun.10/6 | 8 a.m.-1 p.m.

Fri. 10/11 & Sat 10/12 | 8 a.m.-8 p.m.

Sun. 10/13 | 8 a.m.-3 p.m.

Fri. 10/18 & 10/25 | 3 p.m.-8 p.m.

Sat. 10/19 & 10/26 | 8 a.m.- 4 p.m.

Sun. 10/20 & 10/27 | 8 a.m.- 1 p.m.

CLOSED after 10/27

PIZZA PLUS

Friday & Saturday | 11 a.m.-7 p.m.

Sun. 10/6 | 11 a.m.-1 p.m.

Sun. 10/13 | 11 a.m.-2 p.m.

CLOSED after 10/13

BAIT SHOP

Saturday 10/5 | 8 a.m.-4 p.m.

Sunday 10/6 & 10/20 | 9 a.m.-3 p.m.

Saturday 10/12 | 7 a.m.-5 p.m.

Sunday 10/13 | 8 a.m.-3 p.m.

Monday 10/14 | 8 a.m.-1 p.m.

Saturday 10/19 & 10/26 | 9 a.m.- 4 p.m.

Monday-Friday | CLOSED

CLOSED after 10/26



Another fun-filled summer has passed at Woodhaven. While we have moved beyond Labor Day and the bulk of activities and scheduled events, you can still enjoy Woodhaven... at a more leisurely pace. For pure relaxation, there is nothing like a cozy campfire with family and friends on a crisp fall evening. As Woodhaven's awesome fall colors begin to pop, take a hike through the woods on any of our 14 miles of trails. Hiking maps can be picked up at the Association Office or viewed on our website or mobile app. Also, check out the newly installed trailhead signs which provide distances to various facilities and amenities on property from locations on the improved trails. Drop a line in the water and read a book or try your hand at the disc golf course located throughout the Rec Plex area. And not all events are done for the year, with our annual Fall Fest Weekend scheduled for October 12 and 13. This weekend is a favorite for many and offers an amazing Haunted House, caramel apples, Farmer's Market, Open Air Market, wagon rides, and a pumpkin hunt. On Saturday, October 26th, the Recreation Department also hosts the Children's Halloween Party along with lot-to-lot Trick or Treating and a Trunk or Treat program along the paved Open Market path in the Rec Plex area. For some great fall fitness, the Joker Jog 5K Run/3K Walk is on Sunday, October 27th followed by a wonderful breakfast at the General Store for all participants.



And to our plethora of "Snowbirds" who head for warmer weather and don't get to enjoy Woodhaven's "off season" activities, we wish you safe travels and look forward to providing you, and all our Owners and guests, with another season of great programs and services next year.

Annual Budget Process

As we move into fall and the air cools, Woodhaven budget planning and preparation begins to heat up for management, staff, and volunteer Board and Committee members. The next several months will be devoted to preparing and presenting the Association's 2025 - 2026 Annual Budget to Membership. Staff work closely with the Finance and Facilities Planning Committees to prepare a preliminary budget for Property Owners and ultimately to the Board of Directors for approval. The Facilities Planning Committee has reviewed most projects under consideration for next year, and the Finance Committee has already completed its initial review of the operating budget.

Current year projections and several years of actual history are used to establish a preliminary operating budget for review and discussion. Major repair, renovation, replacement, and possible new projects are also evaluated within our reserve plan, and approved changes are incorporated into the planning process. Assessments for the next fiscal year are scheduled to remain at \$1,495 on lots with sewer, and \$1,375 on lots without sewer services for Fiscal Year 2025 - 2026. Beyond that, a combination of inflationary impacts

and several large upcoming projects, including the replacement of Pool 2 and Pool 2 bathhouse scheduled for Fiscal Year 2026 - 2027, are expected to push annual assessment figures higher than initially projected for the next three-year assessment cycle. Several budget workshops and related meetings will be held to further refine the budget and prepare for presentation to the Membership at the Budget Hearing scheduled for Saturday, November 9th.

Public Safety Lot-to-Lot Foot Patrol

While we encourage our Owners and guests to get out for a walk during the fall to enjoy the colors and crisp air at Woodhaven, we do the same to our Public Safety Staff. One of their upcoming annual projects is to perform lot-to-lot foot patrol checks throughout property. Foot patrol checks are typically started in October after Fall Fest Weekend and completed by late November, and they involve walking every lot within Woodhaven to perform a visual inspection of each property. Officers are checking for open roof vents and windows, unsecured doors, water and LP leaks, and any signs of tampering or property theft or damage. If something out of the ordinary is discovered, the Property Owner is contacted and provided with the information. Last year, Public Safety walked a total of 6,216 lots and found:

- 14 open trailer doors
- 83 open trailer windows
- 58 open shed doors
- 7 open shed windows
- 15 broken/cracked windows
- 2 open roof vents
- 2 water leaks

As you hopefully agree, we find this service to be valuable and worthwhile to you as an Owner. Also, please use this as a reminder to secure your RV and shed doors and windows for the off-season during the winterization process.

Big Improvements on Deck for Woodhaven Lake Shoreline and Beach

We have a major project, separated into two phases, scheduled for completion this off-season at Woodhaven Lake - Beach renovations and shoreline stabilization. The first phase is to stabilize 882 feet of Woodhaven Lake shoreline from the boat rental shed to just west of the basketball courts. The main goal of the project is to eliminate shoreline erosion to help provide a more user-friendly shoreline for public usage. The project will add an additional two to six feet of land, depending on the location, and help create a flat "shelf" for fishermen and walkers to comfortably utilize. The shoreline will remain natural with grass right to the water's edge. The project will use a proprietary SOX system, utilizing bioengineered materials and locally sourced natural fill that integrates directly into the earth. The cost for the stabilization phase of the project is \$122,401 with the entire project budget set at \$500,000.

The second phase of the project includes renovation and improvements to the Beach and rental boat launch areas. The main objectives of the second phase include beach stabilization, reshaping and reclaiming the lake bottom at the swimming dock, beach access control improvements, and upgrades at the boat rental area for boat loading and access. These improvements are scheduled to be completed by the opening of next season. Watch for more details on the progress of both phases of the project.

IMPORTANT PHONE NUMBERS

Association Office Main Number	815-849-5209	Service Center	815-849-5107
Public Safety Main Gate	815-849-5915	Woodhaven Utilities.	815-849-5718
Woodhaven Lakes Realty	815-849-5476	Lee County Treasurer	815-288-4477
ESAC	815-849-5371	Lee County Recorder	815-288-3309
General Store	815-849-5189		

Woodhaven News | 509 LaMoille Road, P.O. Box 110 Sublette, IL 61367 | 815-849-5209

Copy & Advertising Deadline: First of each month. No issue in February.

Woodhaven News (USPS001-073) is published monthly except February by Woodhaven Association, 509 LaMoille Road, Sublette, IL 61367, as an official source of information for Woodhaven Association members. Subscription price is \$2.25 per year included in annual assessment.

Periodicals postage paid at Sublette, Illinois and additional mailing offices.

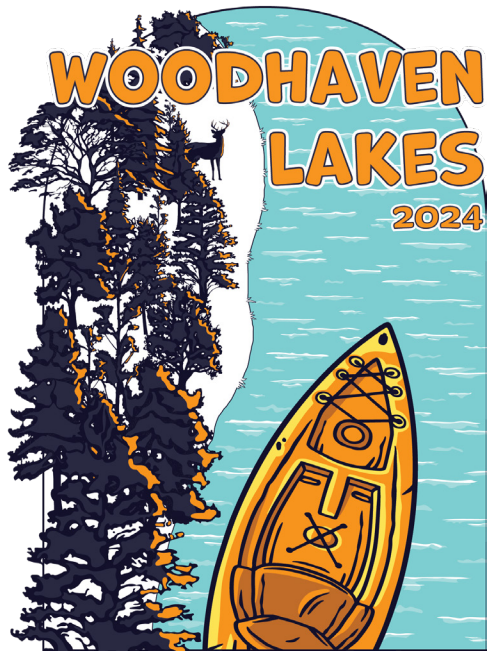
Postmaster: Send address changes to Woodhaven News, P.O. Box 110, Sublette, IL 61367-0110.

The Woodhaven News disclaims any liability for any advertisements published herein and in no way endorses or guarantees these ads. It also reserves the right to reject any ads submitted.

Letters to the Editor: All letters must be signed, names may be withheld upon request. Please limit letters to 200 words. Woodhaven reserves the right to refuse publication of any letter in the interest of space or objectionable content. Issues must be of interest to a large portion of Woodhaven and will not express personal conflicts or grievances. For inquiries regarding the Woodhaven News, or to submit a letter to the editor: NLeffel@woodhavenassociation.com

2024 Woodhaven Lakes Tin Tackers

This year's tin tacker design features a lakeside scene complete with a kayak and a coy deer. Continue your collection by stopping in the Association Office to purchase yours today! Tin tackers are \$25 each and available at the Association Office only.



Anne's garden center
 Gift Cards Available!
 Anne's garden center gift card

3 Trees for \$600
 Delivered & Planted
 One Year Guarantee

We have Fire Pits

1200 N Galena Dixon
815-288-6060
www.annesgc.com

Woodhaven Lakes Realty
 815-849-5476

Here for all your residential needs!

Please Call for an Appointment
 Monday-Saturday | 8:30 a.m.-4:30 p.m.
 Sunday | 10 a.m.-2 p.m.

707 N 4th St
 Ashton

Why look at a remodel when you can move right in to a full renovation? Every aspect of this mid-century home has been addressed. As soon as you pull up, you'll love the blue exterior of the freshly painted cedar siding with new gutters and spruced up yard. The front yard is inviting for sure, but the back yard is both private and cozy - sure to be enjoyed all year long. The neighborhood is nice and quiet, with a lovely public park across the street and farm land directly behind said park. The location is just blocks from Rt. 38, so even being in the quaint community of Ashton you will be aligned with easy access to the surrounding communities of Rochelle, Dixon and just minutes from US 88. As soon as you step inside you will be sure to fall in love. The entryway has a charming built-in to flow perfectly with the style of this flawless renovation. The matching laminate flooring runs throughout the entire home and is a great neutral. The entire HVAC system was installed just months before listing, along with the water heater, water softener and expanded electrical panel. All of the internal plumbing fixtures have been repiped as well. Both the full and half bath were totally renovated with custom vanities and tile. The main bath has a lighted vanity and a double trough sink. The kitchen was totally gutted and renewed with beautiful cabinets, including three roll-out drawers and two with rotating shelves, and the quartz countertops will leave a sparkle in your eye. Then ALL the new appliances will be sure to captivate you - the dishwasher was a new addition but the disposal, stove, microwave and refrigerator are all brand new too. There is an interior water dispenser and ice maker in the fridge for convenience and refreshment. With all of this there is still room for a table and chairs, making this a functional eat-in kitchen if you choose. The huge, sunken family room is quite captivating and will be sure to be a great gathering space with the wood burning fireplace, full brick wall and exposed beams. There is a very convenient dry bar/buffet too with gorgeous butcherblock counter top for entertaining or convenience. A closet within the family room offers great options for room use as well. Directly off this great room is a perfectly appointed screened in porch. With the freshly painted concrete floor, inset tongue and groove pine ceiling and ceiling fan, you can enjoy the space most of the year. The dining room flows perfectly into the living room, but not before you pay special attention to the eye-catching feature wall and stunning new light fixture. Then the living room is nice and deep to afford a gathering of a large group of family and/or friends. Both the north and south walls have striking floor to ceiling windows. The bedrooms all have spacious closets with the old-school pull chain lights having been updated to switches. The main bedroom has another great accent wall that is also eye-catching, yet subtle at the same time. Every inch of the interior has been freshly painted and is heavily insulated from the crawlspace to the attic (access in bedroom hallway). All of these recent renovations were prudently planned out with the contractor and owner while staying true to the original style and relevance of the property. This home was the first all-electric home in northern IL, its location lends it to convenience and charm and should be appreciated by a vast collection of home buyers. If you are looking to get moved in and not spend all summer revamping your new home so it is ready to love, then make an appointment to look at 707 N. Fourth St. Ashton today! **\$285,000**

JIMENEZ CONSTRUCTION SERVICES

Hector Jimenez - General Construction & Carpentry
 Phone: (815)535-6345 | Email: jconstruction8240@gmail.com
 Quality Construction - Honest Service - Reliable For Everyone
 Se Habla Español - Fully Insured

- General Construction
- Carpentry
- Painting
- Power washing
- Retaining walls
- Roofing
- Window/screen repair
- Underbelly work

Woodhaven News Classified Ad Request

We will run your personal classified ad for \$5 per monthly issue (40 words Max.)
 Mail this form to:
Classified Ads, Woodhaven News, P.O. Box 110, Sublette, IL 61367
**The deadline to place a classified ad is the 1st of the month prior to the issue desired*
**All ads must be prepaid*
**Businesses may not place classified ads*
 Please run this ad for the months of: _____
 Amount enclosed: \$ _____

Woodhaven's Honor Roll of Veterans

We are continuing to seek the names of Woodhaven Property Owners and their immediate family who are US veterans or active duty. We will be adding to the list we compiled in over the last few years - if you submitted your info already, we will continue to include you. The Association would be honored to post these names in the *Woodhaven News*. You can fill out the form and return it to the Association Office, online [here](#) or you can send us a message through Facebook. We will continue to accept submissions and publish the list annually. Thank you for your time and thank you for your service to our country!

Woodhaven's Honor Roll of Veterans

Name: _____

Section: _____ Lot: _____

Branch of Military: _____

Wars Served or Peacetime: _____

Additional Information: _____

1645 Crever Coeur St
CONTINGENT
 La Salle

This darling 3 bedroom ranch home is turn key ready! Complimented with many updates including: kitchen/appliances, bathroom, flooring, and light fixtures. An attached 2 car garage means no scraping car windows on those snowy winter mornings! The spacious back yard is lovely and private with beautiful tall wood fencing. This listing gem won't last long-call for a showing today **\$163,500**

Listings available at: woodhavenlakes.com | realtor.com | zillow.com | trulia.com

THE BAIT SHOP

815-849-5451

Fishing & Hunting | Bait & Tackle | Snacks
Bottled Water & Soda | Night Crawlers | Shrimp
Wax Worms | Trout Worms | Chicken Liver

OCTOBER HOURS

Saturday 10/5 8 AM-4 PM
 Sunday 10/6 & 10/20 9 AM-3 PM
 Saturday 10/12 7 AM-5 PM
 Sunday 10/13 8 AM-3 PM
 Monday 10/14 8 AM-1 PM
 Saturday 10/19 & 10/26 9 AM-4 PM
 Monday-Friday CLOSED
CLOSED FOR THE SEASON AFTER 10/26

BOARD ACTION REPORT

The following actions were taken or reported by the Board of Directors at their August 13th, 2024, meeting:

Full meeting minutes will be posted to the Members tab on our website after approval at the August 25th meeting.

- Motion was made to approve the July 27, 2024 – Board of Directors’ Meeting Minutes. Motion passed unanimously.
- Motion was made to approve the July 27, 2024 – Board of Directors’ Executive Meeting Minutes. Motion passed unanimously.
- Motion was made to accept the bid from Ken Nelson for the 2025 GMC Sierra at a cost of \$71,045.88. Motion passed unanimously.
- Motion was made to accept the bid of \$50,763.00 from Prescott Brothers for the 2025 Ram ProMaster 2500 with the approval of the \$2,237 allowance purchase for a total replacement cost not to exceed the \$53,000 budget. Motion passed unanimously.

The following actions were taken or reported by the Board of Directors at their August 25th, 2024, meeting:

Full meeting minutes will be posted to the Members tab on our website after approval at the September 10th meeting.

- Motion was made to approve the August 13, 2024 – Board of Directors’ Meeting Minutes. Motion passed unanimously.
- Motion was made to accept the ESAC Board of Review recommendations as written. Motion passed unanimously.
- Motion was made to accept the Public Safety Board of Review recommendations as written. Motion passed unanimously.
- Motion was made to accept the deer management program

BOARD & COMMITTEE MEETINGS

*Meetings are subject to change, please check our website to view the most up-to-date schedules before attending a meeting.

Please see the online Event Calendar for details. Board meeting agendas will be posted to Facebook prior to each meeting.

SEPTEMBER

7th	Facilities Planning Meeting, Association Office	11:00 a.m.
10th	Board of Directors’ Meeting, NIU Naperville Campus	7:00 p.m.
21st	Communications Comm. Meeting, Association Office	8:00 a.m.
21st	Finance Committee Meeting, Association Office	8:30 a.m.
21st	Section Reps Meeting, Rec Plex Multi-Purpose Room	9:30 a.m.
24th	Board of Directors’ Meeting, NIU Naperville Campus	7:00 p.m.

OCTOBER

11th	Facilities Planning Meeting, Association Office	7:00 p.m.
12th	Finance Committee Meeting, Association Office	8:30 a.m.
16th	Board of Directors’ Meeting, NIU Naperville Campus	7:00 p.m.
19th	Communications Comm. Meeting, Association Office	8:00 a.m.

NOVEMBER

9th	Facilities Planning Meeting, Rec Plex M-P Room	2:30 p.m.
9th	Finance Committee Meeting, Rec Plex M-P Room	2:30 p.m.
12th	Board of Directors’ Meeting, NIU Naperville Campus	7:00 p.m.

Board Meeting Location: Northern Illinois University
Naperville Conference Center
1120 E. Diehl Rd. Naperville, IL 60563

NOTES FROM THE COMMUNICATIONS COMMITTEE

- **It’s time to think about winterizing - have you called your contractor yet?**
- **Reminder! All passes left at the gate will move down to the Association Office December 1st.**
- **Fall Fest is October 11-12 - check out the Fall Fest activities on page 15!**

BAKER INSURANCE

INSURANCE PROTECTION FOR
WOODHAVEN PROPERTY OWNERS



Dear Woodhaven Property Owner...Since 1986, I have specialized in providing insurance for all your camping needs at Woodhaven. I can customize your policy so you only pay for the coverages you need and want.

Some benefits of this program include:

1. All-risk protection including wind, fire, lightning, etc.
2. Coverage for you personal effects, shed, deck, etc.
3. Liability protection for your lot and trailer.
4. Special Discounts if you are 50 years of age.
5. Replacement cost option on your trailer.

If you would like more information, please call anytime, including evenings and weekends.

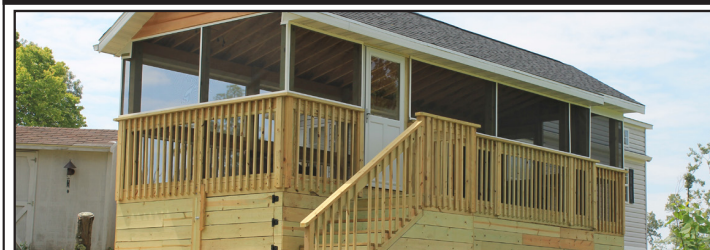
JULIE (BAKER) MOREY

(815) 822-4696

jmbakerins@gmail.com

PRIME SOLUTIONS

KEN RICKETTS
815-690-4025
KEN@PRIMESOLINC.COM
PRIMESOLINC.COM



GOT PROJECTS BACK HOME? WE CAN HELP! CALL US FOR A FREE ESTIMATE TODAY!

- | | |
|-----------------------------------|-----------------------------|
| ROOFING | POWER WASHING |
| CARPENTRY | TRAILER SKIRTING |
| RETAINING WALLS, SEAWALLS, | GLASS REPLACEMENT |
| PATIOS, & WALKWAYS | GENERAL MAINTENANCE |
| GRAVEL DRIVES & PADS | ROOM ADDITIONS |
| PAINTING & STAINING | Durabilt |
| CUSTOM BUILT DECKS & SCREEN ROOMS | - 3-Season & 4-Season Rooms |
| | - Covered Porches |

0% APR financing for your project
Explore 0% APR financing for your project
Up to 18 months
See options
Hearth

FREE ESTIMATES | FULLY INSURED

SHADY OAKS COUNTRY CLUB

815-849-5424
Located just off US Rt. 52
One mile North of Green Wing Rd.

OCTOBER

- 6th | Top Gun Team Scramble.....9 a.m.
CLOSED till 2 p.m.
- 12th | Illinois State Cross Country Meet.....8 a.m.
CLOSED till 12 p.m.
- 13th | 65+ Team Handicap Scramble9 a.m.
CLOSED till 10 a.m.

Summer (May 1st-September 2nd) Monday-Friday (with discount): 9 holes- \$15.00 18 holes- \$22.00	Fall (September 3rd-First Snow) 7 days a week (with discount): 9 holes- \$15.00 18 holes- \$22.00
Saturday, Sunday, Holidays (with discount): 9 holes- \$21.00 18 holes- \$33.00	*Pass must be presented to clubhouse staff to receive discount*

KIDS 13 & UNDER PLAY FREE!*

Loaner Clubs are Available! Parents accompanying young children can pay 3-hole (\$5) and 6-hole (\$7) rates! No Other Discounts Apply to this Special. *with paying adult*

LIVE VIDEO GAMING

Club House Hours

Weekdays: 7:00 AM - Dusk | Weekends: 6:00 AM - Dusk

Visit us at www.shadyoaksc.com to schedule tee times and check the event calendar! Like us on Facebook!

ALL AROUND LAWN SERVICE

MOWING - SPRING/FALL CLEANUP - LAWN ROLLING - POWER WASHING - TREE TRIMMING - AERATING - DETACHING - OVERSEEDING - STUMP GRINDING

Phone: 779-245-1587
Email: allarowlawnservice@gmail.com

FULLY INSURED - DEPENDABLE - AFFORDABLE

SUNCOAST TRAILER SALES

574-594-9000 / 800-434-7330
7839 E. 250 S. PIERCETON, INDIANA

RVIA
"We Won't Be Beat On Price"
FINANCING AVAILABLE

Website: www.SuncoastRvTrailerSales.com

PARK MODELS / RV DESTINATION TRAILERS

\$85,595 ELV3024-22 \$86,995 CB6375-23 \$82,595 FM7286

ELEVATION CANTERBURY FAIRMONT

FREE DELIVERY TO WOODHAVEN
MIDWEST LARGEST PARK MODEL DISPLAY

WELCOME NEW PROPERTY OWNERS - AUGUST

"Welcome" new Woodhaven Property Owners and families. Please stop at the Association Office and pick up your new Membership packet.

Sec/Lot	Name	City/State	
1/31	GINGER LANE	AURORA	IL
2/56	LESTER & DARLENE GEISS	WILMINGTON	IL
2/76	ROB & GRACE URQUHART	BARRINGTON	IL
2/83	TIFFANY & MITCHELL WILKINSON	DEKALB	IL
2/129	DEBRA BARTELT	CHICAGO	IL
3/86	DOUGLAS ERBES	SUBLETTE	IL
3/161	JOYCE KOZIOL	SOUTH ELGIN	IL
3/161	KIMBERLY CALDERON	BARTLETT	IL
3/195	ERWIN & ROCIO FLORES JR	ADDISON	IL
5/37	TOLIO SANCHEZ	CHICAGO	IL
5/141	RICHARD & ANGELA SULLIVAN	WOODRIDGE	IL
6/73	ELSA REY & JOSE SAAVEDRA	CHICAGO	IL
6/161	EDGAR & LUISA CALICOY	NILES	IL
7/129	JOSE MARTINEZ	SUGAR GROVE	IL
11/14	DUSTIN GATCHEL	LOVES PARK	IL
11/290	KRISTYNA & WLADYSLAW KOWALCZYK	JUSTICE	IL
12/25	DENNIS & NANCY NAPLES	ADDISON	IL
15/179	CASSANDRA GUTIERREZ	WHEELING	IL
16/3-4	CLIFFORD HEART	MC HENRY	IL
16/194	EDWIN DAVILA	RIVER GROVE	IL
17/236	JEFFREY POPLAWSKI	JOLIET	IL
17/236	KATIE POPLAWSKI	DENVER	CO
18/9	LAURA ATKINSON	FRANKLIN GROVE	IL
20/8	MARIA CARRILLO & EDUARDO RUIZ	CHICAGO	IL
21/72	JENNIFER GUNDERMAN & JOSE CARRILLO	CHICAGO	IL
22/33	JOHN LOUIS CHIANO	BERKELEY	IL
23/73	ANTHONY PECORARO	CHICAGO	IL
24/88	PATRICIA HARMON & DENISE BARLOW	SEMINOLE	IL
24/123	JOHN & TRICIA KOLZE	WOOD DALE	IL
24/248	JOSE & ALICIA GARCIA	CALUMET PARK	IL
26/3	SCOTT MCMANUS	EAST DUNDEE	IL
26/25	LUIS & ISABEL DIAZ	HOMER GLEN	IL
27/57	TONY & NORMA BATTAGLIA	LASALLE	IL
27/85	MARIO CASTRO & LUZ TAVIZON	MONTGOMERY	IL
29/50	PHILLIP SANCHEZ	CHICAGO	IL
29/319	EFRAIN & MARIA LOPEZ	SHOREWOOD	IL

SECTION REPRESENTATIVES & ALTERNATES

SECTION	REPRESENTATIVE	ALTERNATE
Section 1	Nancy Nieslawski	
Section 2	Pat Sirbas	Jane Elliott
Section 3	Maria Dellegrazio	Judy Gonzalez
Section 4	Gregg Swanstrom	Pamela Smith
Section 5	Pat Looby	Dale Fildes
Section 6	Michael Flanigan	
Section 7	Karen Larson	Lee Patterson
Section 8	Linda Smith	Mary Muir
Section 9	Jack Meyers	
Section 10	Bob Palatine	Tony Lona
Section 11	Rosa Galarza	John McCarthy
Section 12	Heather Hansen	
Section 13	Missy Silfies	
Section 14	Lee Campbell	
Section 15	Nancy Jackson	Elaine Ayres
Section 16	Ernest Mitchell	Rich Ziegenfuss
Section 17	Darlene Singleton	Diana Fontanez
Section 18	Rosemary Colness	
Section 19		
Section 20	Anthony Sarullo	Mike Connelly
Section 21	Shaunta Stocking	Joe Sedevic
Section 22	Kathy Brush	Kim Gibas
Section 23	Brenda Kriss	Rita Olsen
Section 24	Laurie Picha	Phyllis Sippel
Section 25	Ryan Davidson	Kurt Benda
Section 26	Jacqueline Foulk	
Section 27	Donna Sportun	
Section 28		
Section 29	James Robinson	Arthur Orsini

CLASSIFIEDS

2017 29' Keystone Springdale travel trailer like new condition. One large bump-out, queen bed in master with bunk beds in bunk house. Arctic package for year-round all season camping. \$28,000 **call: 815-830-1930, Brian (10)**



REGISTERED SEX OFFENDER LIST

Robert Hipshur-Sec. 21, Lot. 33
 William Dubois-Sec. 17, Lot. 122-123
 Christopher Jamroz-Sec. 11, Lot. 203

ESAC CITATIONS - AUGUST

Sec/Lot	Violation
1/47	RV does not appear to meet 7' setback/needs setup
1/103	Building materials - landscape timbers
2/143	Fire pit blocks not set; bldg. materials - blocks, timbers
2/289	Exposed wires into shed; concrete pillars under deck over 3"
3/125	Registrations on three snowmobiles expired 9/30/23
3/186	Exposed wires on light pole; missing/rotten wood on patio
4/18	Damaged vent on RV
4/22	No permit to demo shed or rework fire pit; fire pit 6.5" diameter
4/23	RV condition - no cover on electric inlet, tape on door, spray foam
4/26	Exposed wire under RV; loose shingles/tarp on shed
4/115	Open at top of shed doors; damaged wood on shed
4/119	Awning on RV damaged; bldg. materials - PVC, lumber, timbers
4/186	Miscellaneous building materials
5/13	Building materials-patio blocks, concrete blocks, lumber, timbers
5/266	Registration on LSV expired 6/30/24
5/312	RV cord buried
5/353	Registration on van expired in 2023
5/354	No railing on deck; bldg. materials - lumber, deck boards, posts
5/420	Cords plugged into outlet on RV; bldg. mat- blocks, lumber
5/459	No permit for patio
6/14	Damaged skirting around deck; damaged overhead frame
6/32	Rotten wood and mismatched siding on room
6/139	Broken window on RV; loose cap on sewer inlet
7/13	Tarp over RV
9/75	Over 400 sq ft enclosure
10/131	Exposed wire to outlet; rotten/missing wood on shed
11/81	Shed 4 1/2' from line
11/120	Building materials - landscape timbers
11/158	Building materials - railroad ties, blocks
11/191	Rolled asphalt roofing/bricks on RV roof
11/225	Cover on switch damaged
11/271	Wood pile, table, chairs over 271/272 property line
12/18	Building materials - blocks; tree on shed
14/105	Exposed wire on RV; tape on wire at A/C; rotten wood on shed
15/12	Interior junction box under OH; open at top of shed doors; tarp
15/158	Shed roof damaged
16/15	No permit for RV; registration on motor RV expired; bldg. mat.
16/156	Room roof/wall damaged; tarp on roof; damaged antenna
16/157	Rotten wood on shed/room; hole in RV; RV window damaged
16/174	Rotten wood on patio; bldg. mat - fencing, blocks
17/2	No permit for exterior shower; shower not connected to sewer
17/30	Registration on truck expired in 2023
19/57	Wood frame around fire pit
21/9	Registration on motor RV expired 12/31/23
21/26	Trim boards missing from shed doors
21/259	Broken window on RV; RV missing skirting; exposed wire
23/57	Building materials - blocks and cement pieces
23/118	Open at top of shed doors
24/154	RV tip-out less than 7' from line; NEMA3 at ground level
24/224	Registration on Jeep expired 2023; flat tire on Jeep
25/39	Dish on property line; exposed wire under room
25/108	RV cord buried; open above shed doors
26/225	Exposed wire at A/C; building materials - deck boards
26/240	Shed roof deteriorated
27/51	Tarp over RV
27/109	Building materials - lattice, blocks
27/166	Lights supported by trees
28/6	Building materials - blocks

PUBLIC SAFETY CITATIONS - AUGUST

Sec/Lot	Offender	Offense
2/268	Guest	Failure to have driver's license/permit while operating a motor vehicle
4/120	Guest	Speeding 28 mph in a posted 20 mph zone
10/205	Guest	Speeding 32 mph in a posted 20 mph zone
10/294	Guest	Speeding 30 mph in a posted 20 mph zone
14/55	Guest	Disposal of restricted trash or debris
15/155	Owner	Speeding 31 mph in a posted 20 mph zone
17/158	Owner	Speeding 36 mph in a posted 20 mph zone
17/178	Guest	Speeding 35 mph in a posted 20 mph zone
17/257	Guest	Speeding 34 mph in a posted 20 mph zone
18/90	Owner	Speeding 30 mph in a posted 20 mph zone
24/69	Owner	Failure to comply
24/234	Guest	Speeding 35 mph in a posted 20 mph zone
26/154	Guest	Speeding 30 mph in a posted 20 mph zone
27/49	Guest	Operating a motor vehicle with no license - underage driver
27/49	Guest	Failure to obey traffic sign - Sec 27 yield
27/49	Guest	Operating a motor vehicle with expired registration

Gene's Lawn Service

- Retaining Walls, Patios, & Walkways
- Landscaping | Tree Trimming
- Mulching | Mowing
- Power Washing
- Spring Clean Up | Fall Clean Up

815-671-1542 | gls8794@icloud.com

Licensed Wildlife Control, LLC



Beaver • Raccoon
 Groundhogs • Bats

Skunk • Moles • and More!

Art Albee

815.857.3989 | 815.535.2882 | artalbee@hotmail.com | Amboy



SALES • SERVICE
 RENTALS • STORAGE
 MINI-STORAGE

Matt Koning
 Owner/Mechanic/LSV Sales
 Cell: 815-973-2711

Josh Hintz
 Manager/Mechanic

Lane Koning
 Sales & Customization Expert

MSK Enterprises, LLC 815-857-4211
 981 Green Wing Road • Amboy, IL 61310

mskgolfcars.com @mskgolfcars
 Email Matt, Josh or Lane: matt@mskgolfcars.com



FIRE SAFETY TIPS

WHAT ARE FIRE SAFETY TIPS?

Fire safety tips are tidbits of information that can supplement fire safety practices of maintaining a secure and hazard-free environment to keep people safe from fire accidents. It's important to be well-informed about fire safety preventive measures

Smoke Alarms: Install smoke alarms on every level of your dwelling, inside bedrooms and outside sleeping areas. Be sure to test all Smoke Alarms once every few months, if not working replace batteries or unit, if Smoke Alarms are 10 years old (replace).



Fire Extinguishers: You should have at least two 5LB ABC Fire Extinguishers, you should inspect them once a year making sure that they are fully charged and ready to go.



Inspecting Fire Extinguisher: Inspecting - check the gauge to make sure the gauge needle is in the green as well checking the hose, making sure there are no kinks or damage to the hose. By doing so you are making sure your unit is ready to go.

If the gauge needle is in the red or 10yrs old, then it should be replaced.

How to use an Extinguisher: Use the Acronym P.A.S.S. Pull- Aim- Squeeze and Sweep at the base of the fire.



Camp Fire Safety: Remember to never leave your campfire unattended, and always extinguish your campfires when turning in for the night. Never use accelerants /flammable liquids to start your fire. Doing so may or will cause a flash explosion and bodily harm or death.

Always have a water source, a garden hose or water fire extinguisher nearby.

BY NO MEANS ARE YOU TO FIGHT LARGE FIRES LEAVE THAT FOR THE LOCAL FIRE DEPARTMENT. IF YOU SEE OR HAVE A FIRE CALL PUBLIC SAFETY 815-849-5915 AND 911.

October means Fall Fest, crisp night air around a cozy campfire, pumpkin spice everything and for many of our Property Owners, it also means closing their site for the winter.

As you prepare your property for the coming winter, take a critical look around your property to be sure items have been stored appropriately. If you are unable to store items in a shed or storage locker, make sure they are stored in a neat and orderly fashion and not as you last used them. Remember Woodhaven winters can be harsh so make sure your items will remain secure when the winter winds begin blowing.

Don't forget to empty trash and recycling containers. These items can draw our woodland friends, and they can quickly turn a neat and tidy property into a lot with "trash and debris" if given the right opportunity. Make sure your empty receptacles are stored appropriately to not collect water.

If you use tarps to protect your structures, make sure the tarps are properly secured. Tarps which blow off with the first storm not only become "trash and debris" on your lot, but they are no longer protecting your property.

Tents and fabric overheads need to be removed by December 1st. Snow and ice accumulation on these structures can cause significant damage. The frames for the portable overheads and screen rooms do not need to be removed.

Boats stored on common property need to be removed by December 1st. Boats which are not permitted to operate on Woodhaven's lakes, such as boats over 16' or with a gas-powered motor, need to be removed from property from December 1st through March 1st.

If you haven't made arrangements to winterize your camper, you will want to address this sooner rather than later. Once temperatures are below freezing, it may be too late. If you are unable to winterize your camper yourself, we have several contractors that can perform this for you. Their schedules fill up quickly so you will want to contact them as soon as possible. You can find a list of registered contractors on our website and app, in the ESAC Information kiosk in the front lobby of the Association Building or by stopping in the ESAC Office.

Snow & Ice Control Procedures

- The decision to plow snow and/or apply ice control materials to Woodhaven's roads will be made by Maintenance Department personnel and will be based on a variety of factors including: forecasted depth of snow and temperatures, time of day, and scheduled activities and events.
- When blinding conditions exist, all equipment will be pulled off the roads until it is safe to operate.
- Woodhaven Drive East and West, Greenbriar Trail, Mayfair Trail, and Cranhurst Trail are priority roads. These roads are plowed and/or spread with chips in their entirety first. Secondary roads and cul-de-sacs are plowed only after the priority roads are tended.
- Specific problem areas will be handled as soon as possible after the Maintenance Department has been notified. Emergencies should be directed to the Main Gate by calling 815-849-5915.
- Property Owners are required to remove vehicles completely from the road at all times during the snow removal process. Citations will be issued to violators.
- Plows may make several passes in order to widen the roads. "Windrows" are unavoidable.
- Plows will not be lifted at any entrance to individual driveways.
- Maintenance personnel are prohibited from plowing private driveways; clearance of driveway entrances is the responsibility of the Campsite owner.
- Association personnel are prohibited from using Woodhaven vehicles for the purpose of pulling or towing owners or guest's vehicles.



MONDAY	TUESDAY	WEDNESDAY	THURSDAY	FRIDAY	SATURDAY	SUNDAY
	1	2	3	4	5	6
7	8	9	10	11	12 Fall Fest Weekend	13
				Facilities Planning Mtg, 7pm	Finance Mtg, 8:30am Farmers Market Pumpkin Hunt Food Fare Caramel Apple Sales Painting Party Ticket Tent Haunted House Trout Fishing Opens Weather Permitting	Open Market Farmers Market Pumpkin Hunt Food Fare Ticket Tent
14 COLUMBUS DAY	15	16 Board of Directors' Meeting 7pm NIU Conf. Center	17	18	19	20
					Communications Committee Mtg, 8am	
21	22	23	24	25	26	27
					Kids' Halloween Party Painting Party Trick or Treat Trunk or Treat	Joker's Jog 3K/5K
28	29	30	31 HALLOWEEN	SEPTEMBER M T W Th F S Su 2 3 4 5 6 7 8 9 10 11 12 13 14 15 16 17 18 19 20 21 22 23 24 25 26 27 28 29 30		NOVEMBER M T W Th F S Su 1 2 3 4 5 6 7 8 9 10 11 12 13 14 15 16 17 18 19 20 21 22 23 24 25 26 27 28 29 30
		Paper Bag Pick Up Ends				

RECREATION & ACTIVITIES

Fall Festival 12-13 | Columbus Day Weekend

Come out and enjoy the beautiful fall weather! We have so many activities to offer, with our favorite being the Haunted house! Starting with our Petting Zoo, Wagon rides, and Pony rides, families will have a chance to enjoy the relaxing fall weather. Exciting fall activities like pumpkin hunts, crafts, games, and more will be available throughout the weekend! You won't want to miss out on the food fair and open market vendors either! Check out the schedule below, we hope to see you there!

FALL FESTIVAL SCHEDULE OF EVENTS

This schedule is subject to change. Please pick up a copy of the [Leisure Times](#) at the front gate on Fall Fest Weekend for a complete schedule and be sure to check the Event Calendar on Woodhaven's website at www.woodhavenassociation.com/events-calendar.

Saturday, October 12

- Trout Season Opens (weather permitting) 6 a.m.....Pine, Hidden, Bluegill Lakes
- Crafts..... TBD..... Creation Station
- Food Fair..... 11 a.m..... Pavilion
- Wagon Rides/Petting Zoo..... 11 a.m.-4 p.m..... Pavilion Playground
- Pony Rides 11 a.m.-4 p.m..... Pavilion Playground
- Crafts..... 1 p.m. Creation Station
- Caramel Apple Sales..... TBD..... Rec Plex
- The Great Pumpkin Patch TBD..... Woodhaven Lake area
- Haunted House TBD..... Pool 1

Sunday, October 13

- Open Market 9 a.m.-3 p.m..... Rec Plex
- Food Fair..... 10 a.m..... Pavilion
- Wagon Rides/Petting Zoo 10 a.m.-3 p.m..... Pavilion Playground
- Pony Rides 10 a.m.-3 p.m. Pavilion Playground
- Caramel Apple Sales..... TBD..... Rec Plex
- Crafts..... TBD..... Creation Station
- The Great Pumpkin Patch TBD..... Woodhaven Lake area

CARAMEL APPLE SALES

You won't want to miss out on these delicious caramel apples! Back again this year, our apples are freshly dipped locally at the Minonk Chocolate Factory. With more than ever before, Caramel Apples will be available at the Rec Plex throughout the weekend.

OPEN MARKET | SUNDAY, OCTOBER 13TH

This is your last chance of the year to hunt for that special bargain, or unique collectible. Come to the Rec Plex from 9 a.m. – 3 p.m. to look for those treasures that can't be found just anywhere. This is your chance to get the first of your Christmas shopping done. Don't miss this great opportunity!

Halloween Events

CHILDREN'S HALLOWEEN PARTY | SATURDAY, OCT. 26TH

The Recreation Department will be holding its annual Halloween Party for children (ages 13 and under) and their parents. Doors will open for the party at 11 a.m., and kids can participate in different Halloween party activities!

SIGN UP FOR TRICK OR TREATING AT WOODHAVEN!

Back again this year is Trick-or-Treat! Along with our usual trick-or-treat list, where costumed kids come to your lot for candy, we will be offering a Trunk or Treat in the parking lot between the Rec Plex and the General Store. You can participate in both trick-or-treating lists.

TRICK OR TREAT LIST

If you are interested in being involved in our standard trick or treating, please stop by or call the Association Office at 815-849-5209 with your name, section and lot number, phone number, and home address (so that signs can be mailed to you). If you are interested in being a sponsor for trick or treat you must register with the Association Office no later than Monday, October 21st. Trick or Treating generally takes place from 2:30 - 4 p.m. on Saturday, October 26. We typically have 150-175 trick-or-treaters and Halloween party participants in all. We will have colored "Trick or Treat" signs for you to pick up that you can place at your lot on the day of the event.

TRUNK OR TREAT

This event gets bigger and bigger every year! If you are interested in trying out the Trunk or Treat, we will be lining cars up the open market path near the Rec Plex. Once Trick or Treating has begun, cars will remain in place so that our costumed kids can go from trunk to trunk to gather as much candy as we can hand out! Trunk or Treating will run from 12:30 - 2 p.m. on Saturday, October 26. We ask that your vehicle remain in place during this time for the safety of the kids participating. Decorating of trunks is encouraged, but keep things more spooky (fun) rather than scary! Sign-up ahead of time is encouraged but not required! Please call or stop by the Association Office to sign-up!

BOOHAVEN RACE | SUNDAY, OCTOBER 27

On Sunday, October 27, join us for our 7th annual BOOHAVEN 5K/3K. Registration will include a complimentary brunch at Woody's General Store! This race will take place in the Rec Plex/General Store area. You can find registration forms at the Association Office, on the next page, on the app, or on our website under Events>Event Registration.



La Fiesta
MEXICAN & AMERICAN RESTAURANT

Tacos & Enchiladas | Burritos
Quesadillas | Chimichangas
Fajitas | Salads
Burgers & Sandwiches

Join us Tuesday Nights for Taco Tuesday!

107 Main Street, Sublette | 815.849.9224
Tuesday&Thursday: 11a.m.-9p.m. | Friday & Saturday: 11a.m.-10p.m.
Sunday: 8a.m.-9p.m.

JLS Insurance Agency
815-434-4475
REPLACEMENT COST COVERAGE
AVAILABLE ON MOST UNITS
ASK ABOUT A DISCOUNT IF YOU ARE AGE 50

REPRESENTING -
FOREMOST
INSURANCE GROUP

HHT of Illinois
Construction Services 20+ Years

Roofing | Custom Decks | Room Additions
Winterizing | Spring Clean Ups
Inspections | Maintenance | Gravel Pads | Driveways

815-849-4240
Visit us on Facebook to see our work!
Major Credit Cards Accepted

MTA LAW

MARTHA M. TORREZ-ALLEN HERRERA
"Martita"
ATTORNEY AT LAW, LL.M.

Document Review & E-Discovery
Wills & Estate Planning

PH: 773/616-9694
Email: loquita8@gmail.com
Se Habla Espanol

CURT'S CARPENTRY L.L.C.

Wood Decks | Room Additions
Screen Rooms | Steel Roofing
Windows, Doors, Siding

815-326-0869 | curts@frontier.com



**JOKERS
JOG 3K / 5K
OCTOBER 27TH**

Our Annual Boohaven 5K Run & 3K Walk will utilize our gravel recreation path. All ages are welcome!! All those registered by Monday, October 7th will be **GUARANTEED** a commemorative t-shirt on race day! Each participant will receive a goodie bag on the day of the race! Registration ends on October 26th. Check-in time is 8 a.m. on race day; 5K will leave at 9 a.m. with 3K departing immediately following.

Included in your registration fee is a custom t-shirt, professionally timed/recorded race, and post-race party that includes breakfast. We will be offering an additional packet pick-up opportunity on Saturday, October 26th from 3 p.m. - 5 p.m. Race times will be recorded by Racing Expectations.

5K RUN & 3K WALK REGISTRATION FORM

Name: _____ Age: _____ Sec: _____ Lot: _____
 Address: _____
 E-Mail: _____ Phone: _____
 Please Check: 5K: _____ 3K: _____ | Male: _____ Female: _____ | Property Owner: _____ Guest: _____
 Shirt Size (Please Circle): XS Small Med Large XL 2XL 3XL
 Registration Fees: Early Bird - Before Oct. 7 - \$20 Late Registration - Oct. 8 and after - \$25 Amount Paid: _____

I know that running in races is a potentially hazardous activity. I should not enter or run in a race unless I am medically able. I assume all risk associated with running races including but not limited to falls, contact with other participants, the effects of the weather, including high heat or humidity, the conditions of the road and the traffic on the course, all such risks are known and appreciated by me. Having read this waiver and knowing these facts, I for myself and anyone entitled to act on my behalf, waive and release the Woodhaven Association, Department of Recreation and all sponsors, their representatives and successors from all claims or liability that may arise.

Signature: _____ Date: _____
 (Parent or Guardian must sign if participant is under 18 years of age)

Dear Woody



“Dear Abby,” “Dear Prudence,” “Ask Elaine,” and even our own gone-but-not-forgotten “Help from Benny.” Whomever you ask, advice columns are a popular outlet to submit a somewhat anonymous question, comment, or suggestion. The Communications Committee has decided to revive the advice column format within the *Woodhaven News* as “Dear Woody.”

You can ask “Woody” anything Woodhaven related! A submission form is available on the Owners’ side of the website (under “Forms”) and on the app. The Communications Committee will publish a response to your submission in the next available *Woodhaven News*.

New Package Policy

As you may have already read in previous issues of the *Woodhaven News*, the Board has adopted an official policy regarding Owner packages delivered to the Association Office. The below policy is in effect as of December; please be sure to read through all the parameters before ordering a package to be delivered to the Association. Packages received by the Association that do not follow the policy will be returned to the carrier without notice. This Policy can also be found in the Policy Manual as **04-200-1223 Package Handling Policy**.

1. Packages must be addressed to 509 Lamoille Rd., Sublette, IL 61367.
2. Packages must be addressed to an Owner of Record as shown on the deed, and the Section/Lot of the Owner must be listed in the address.
3. Packages weighing 60 pounds or less will be accepted. Any Packages received over 60 pounds will be rejected at time of receipt and returned to carrier, at no cost to the Association.
4. The Association will log the name of the person picking up packages. The Association is not responsible for the package(s) once they are logged out.
5. Owners are responsible for the removal of packages from the Association office area.
6. Packages are expected to be picked up within a week. Packages remaining 30 days after receipt will be returned to the carrier, at no cost to the Association.
7. Non-conformance to any part of this policy will result in rejection/return of the package(s) to the carrier without notice, and at no cost to the Association. Rejection/Return of packages to the carrier will be noted in the Association log.

VAESSEN BROTHERS CHEVROLET, INC.
 "GREAT DEALS - GREAT SERVICE SINCE 1926"
 HIGHWAY 52
 SUBLETTE, IL 61367
 800-227-5203

COMPANION ANIMAL CENTRE
 1701 13TH AVE
 RT. 251 NORTH
 MENDOTA IL, 61342
 (815) 539-6601
 Your Companion-Centered Family Veterinarian in the Country
 WWW.MENDOTAVET.COM

SnK Electric
 815-570-7196
 25+ years experience
 Lic.# 1862 & 197
 Service Upgrades
 New & Old Work
 Meter Pedestals
 Violations Corrected
 Trenching
 Water & Sewer Extensions
 & More!

ESTIMATED PACKAGE DELIVERY TIMES

- UPS - mid-late morning
- FedEx - mid-late afternoon
- USPS - noon



I.T. Department

Association Office | 815-849-5209



Sam Owens
I.T. Manager
11 Years



Jacob Heidenreich
I.T. Coordinator
1 Year

Administrative I.T. Responsibilities

- Maintain approximately 5 network servers
 - > Including the Navision-based Property Owner Database, the Lenel Gate/Pass Access Control System (Includes the Maintenance UMD Compound + Main Gate Facility), as well as enterprise-standard systems core to network/IT infrastructure.
- Deploy and maintain the Fidelity Phone System across all facilities on-site.
- Deploy and maintain the ExacqVision NVR Camera System across all facilities on-site.
- Deploy and maintain Woodhaven's Microsoft Office 365 licenses and services.
- Deploy and maintain all PCs as well as many miscellaneous network-related devices at all facilities on-site.
- Configure and monitor the RMH POS System at the Administration Office.
- Configure and monitor the Square POS System at the Bait Shop and all Recreation Facilities.
- Work with Aquatics Staff for the maintenance and scheduling of the Omnify Pool Reservation System.
- Deploy and maintain the Aruba-based network mesh system that provides guest WiFi to Property Owners at various Woodhaven amenities.

General Store I.T. Responsibilities

- Configure and monitor the RMH POS System at the General Store.
- Configure and monitor the TouchBistro Restaurant POS System in the Campstove Restaurant.
- Deploy and monitor the ScreenCloud Menu Display System for the Deli and Pizza+ Services.
- Work with General Store management to schedule network-related support and improvements.

Service Center I.T. Responsibilities

- Work with Service Center staff to support the Eagle POS Service with the assistance of the Eagle developer, Epicor.
- Work with Service Center management to schedule network-related support and improvements.

Woodhaven Lakes Realty, Inc.

Association Office | 815-849-5476



Bonita Willis
Designated Managing Broker
14 Years



Susan Heck
Office Associate
7 Years



Cooper Whitney
Office Assistant
1st Year



Mary Lovgren
Realtor® Broker
14 Years



Justin Wiley
Realtor® Broker
4 Years



Salvador Bayron
Realtor® Broker
5 Years

Full Service Real Estate Office

- Full service real estate office, handling both listing and sales of all types of properties.
 - > Residential
 - > Recreational
 - > Commercial
 - > Land
- Our focus is on the Recreational, and those properties move year-round.
- Our office also offers general Woodhaven tours for customers curious about Woodhaven.
- WLRI works closely with all Woodhaven departments to be able to provide full details about individual properties, as well as Woodhaven as a whole.
- We know our market! With our other listing/sales services, we maintain our work within an area of which we have solid knowledge. For example, you won't see WLRI listing a Michigan Ave. condo.
- We are confident in our expertise and services and feel they are best suited and appreciated close to home.
- WLRI offers closing only services, also.

Year-Round Staff

- Our Broker staff works year-round, and they maintain their own schedule and client base.
- Most of them work every weekend and assist multiple clients daily.
- Their workloads get very heavy in the warmer months, and they have to balance their time and efforts equally, no matter the price tag of the listing or budget of the buyer.
- Our office strongly encourages appointments to be made prior to arriving at our office; for listing, buying or touring. This will allow our staff to give each customer our full attention and the time needed to meet their expectations.

Woody's General Store

General Store | 815-849-5189 :: Campstove Restaurant/Pizza Plus | 815-849-5197



Jonathan Quintana
Director of Woody Inc.
4 Years



Cory Boehm
Facility Manager
3 Years



Stacey Lyons
Food Service Manager
1 Year



Theresa Taylor
Account Clerk
9 Years



Margarita Alvarez
Food Service Supervisor
3 Years



Colleen Bronk
Food Service Supervisor
6 Years

2024 Seasonal Staff

Abel Belan, Michael Bronk, Jamie Foster, Jerry Garland, Matthew Hanne, Theresa Hanne, Jennifer Holland, Brandon Johnson, Liam Ketchum, Logan Ketchum, Lexi Lyons, Madison Lyons-Lewis, Myles Nally, Lizbeth Quintana, Cynthia Scarbrough, Dawn Spriet, Susan Stewart, Robert Techter

General Store

- Clothing, swimwear, toys, healthcare items, firewood, pet foods, non-foods, groceries, snacks, drinks, produce, liquor, cigarettes, lottery, and more!

Restaurant

- Baked goods, cold deli, hot deli, sandwiches, salads, chicken, burgers, breakfast items, fountain drinks, and pizza

Laundromat

- Open 24/7, 11 washers, 10 dryers, soda vending machines, water vending machine, snack vending machine, soap vending machine, public bathroom, WiFi available

What's New?!

- New Woodhaven engraved cups & mugs
- Popular tin tacker apparel back in stock!
- Fresh meat options now available through Purely Meats
- Food service items:
 - > Breakfast: waffles, "Southwest" skillet, chorizo breakfast bowl
 - > Lunch/Dinner: BLT, pork tenderloin sandwich, loaded fries, gucamole bites, & pulled pork nachos
- Grab & go lunch items
- Daily lunch specials
- Woodhaven board game and yearly theme t-shirts
- Flex laundry card system
- Catering menu available to all Property Owners - see manager for orders
- Everything is Ducky apparel
- New ice supplier: Home City Ice

Woody's True Value (a.k.a. Service Center)

General Store | 815-849-5189 :: Campstove Restaurant/Pizza Plus | 815-849-5197



Jonathan Quintana
Director of Woody Inc.
4 Years



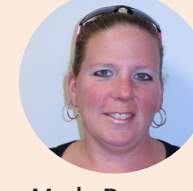
Chris Tidmore
Facility Manager
1st Year



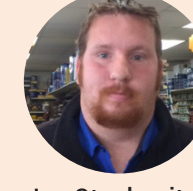
Jose Moreno
LP Manager
1 Year



Chris Miller
LP Manager
1st Year



Marla Pearson
Account Clerk
10 Years



Joe Stephenitch
Yard Worker
9 Years



Frank Lowery
Stock Clerk
8 Years



Mike Mays
Stock Clerk
9 Years

Part Time/Seasonal Staff

Mason Ely, Jairon Hochstatter, Paula Leffelman, Maggie Lowery, Cynthia Scarbrough, Nathaniel Sikes, Donna Sloan, Alyvia Whelchel, Jady Whelchel, Landon Whelchel

Building Supplies

- Lumber
- Hardware
- Roofing Materials
- Decking Supplies
- Tools
- Tool Rentals

Lawn & Garden Supplies

- Grass Feed
- Pest Control
- Mulch
- Shepherd's Hooks
- Garden Tools
- Lawnmower Parts
- Fertilizer
- Blocks
- Top Soil
- Sprayers
- Gravel
- Garden Hoses

Household Supplies

- Kitchen Gadgets
- Trash Cans
- Batteries
- Cleaning Supplies
- Storage Containers

Interior/Exterior Décor

- Stepping Stones
- Flower Pots
- Weather Gauges
- Lights
- Bird Houses
- Statues
- Flags
- Signs

Patio Furniture

- Picnic Tables
- Patio Heaters
- Patio Chairs
- Fire Pits

Electrical/Plumbing Supplies

- Fuses
- Extension Cords
- Surge Protectors
- Pipe Fittings
- Heater Elements
- Faucets
- Circuit Breakers
- Light Bulbs
- Pipes
- Toilet Seats
- Thermostats

Painting Supplies

- Paints
- Brushes/Rollers
- Trays
- Tape
- Stains
- Tarps
- Buckets

Propane/Grilling Supplies

- Tanks
- Regulators
- Monitors
- Gauges
- Charcoal/Pellets
- Hoses
- Fittings
- Parts
- Grills
- Lighter Fluid

Camping Supplies/Sporting Goods

- Tents
- Lanterns
- Basketballs
- Inflatable Pools
- Tackle Boxes
- Air Pumps
- Sleeping Bags
- Volleyballs
- Nets
- Fishing Poles

Other Services:

- Gasoline
- Propane
- Glass Cutting
- Key Cutting
- UPS/FedEx Drop Off

Woodhaven formed a deer management Ad-Hoc committee in the spring of 2023. Their mission statement is “to collect, review and analyze data related to Woodhaven’s deer population and make recommendations to the Board of Directors based on this data for the purpose of maintaining a well-balanced and healthy deer herd at Woodhaven.”

Deer Management Ad-Hoc Committee

6/15/2024 – The motion was made and approved “to follow through with obtaining a Deer Population Control Permit.”

The motion was made and approved “to not wait for CWD confirmation then let the IDNR manage the situation.”

The motion was made and approved “to follow through with neighboring landowner/hunter incentives.”

7/20/2024 – The motion was made and approved “to approve the Deer Population Control Permit recommendation to the Board.” This recommendation will be presented to the Board of Directors

8/25/2024 – The Board of Directors approved the Deer Management Committee recommendation to the Board as written.

Deer count summary:

Date	Total deer on property	Total w/ 15% correction factor	Deer/sq mi.	Conditions
4/5/2022	163	187	77	52°, light winds, occasional rain
1/18/2023	219	252	103	Overcast, 38°, light winds, no rain
2/8/2023	294	338	138	Partly cloudy, 41°, light SE winds,
3/14/2023	255	293	120	Sunny, 36°, light N winds, no snow
11/14/2023	159	183	75	Sunny, 60°, 16 mph S winds
11/28/2023	215	247	101	Sunny, 21°, 8-10 mph SW winds
12/12/2023	313	360	148	Sunny, 36°, 8-10 mph W winds
1/3/2024	304	350	143	Overcast, 36°, light winds
2/6/2024	324	373	153	Overcast, 44°, Light S winds
2/20/2024	367	422	173	Clear, 56°, 18mph SW winds
3/5/2024	306	352	144	Overcast, 42°, 6mph N winds

DEER COMMITTEE RECOMMENDATION TO THE BOARD

The Board of Directors approved for the Association to apply for Deer Population Control Permits (DPCPs) at the recommendation of the Deer Management Committee. The permits are issued by the IDNR to help control the deer herd populations within their grounds. The permit would be submitted by Woodhaven staff. The IDNR would review and, if deemed appropriate, would approve the application.

- If the application is approved, our initial plan is for 50 to 100 permits for Woodhaven to target antlerless deer.
- The permit would be good for 90 days with harvesting being conducted in January/February.
- United States Department of Agriculture (USDA) would perform the sharpshooting. 1 shooter, 1 spotter and all deer retrieval.
- The shooting would be done at elevated stationary locations, in isolated areas, over bait using rifles with low energy ammunition at close range. This would occur at night and notification would be put out well in advance.
- Shooting sites would be in common areas, preferably on the edges of property. Areas that will be focused on must have a suitable backdrop such as woods, hills and ravines. Preservation areas in Woodhaven would be looked at first. Selected locations would have to be approved by the DNR and USDA based on safety and accessibility.
- Woodhaven staff will be responsible for harvesting the samples for CWD testing, all prep work in preparation for processing, delivering deer to processing plant, and donating the processed meat to food pantries.

The second aspect of the recommendation is neighboring landowner/hunter incentives. The local landowners and hunters understand there is an overpopulation of deer in the area. They are willing to help harvest more deer if the meat is utilized and there is no financial burden on them for processing. The Association will cover the cost of processing the deer and the ground meat will be donated to food pantries. Prepping each deer for processing would be the responsibility of the landowner/hunter, if possible, staff would take samples from each deer for CWD testing.

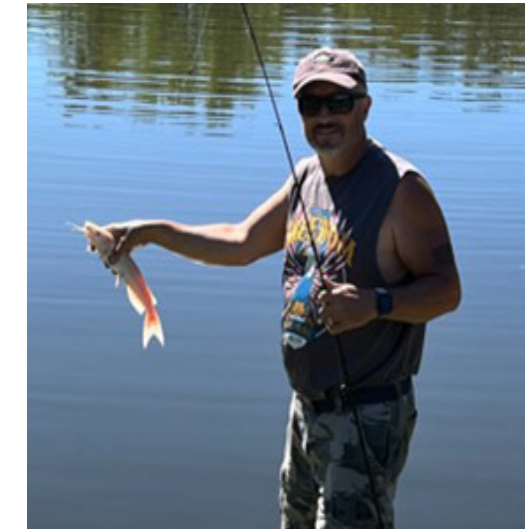
More information regarding the details of this program will be provided in future articles.

Trout stocking will tentatively be scheduled for October 9th or 10th. We will be stocking Pine, Bluegill and Hidden lakes with a total of approximately 1,000 lbs of trout. Please remember to purchase your TROUT STAMP before you are fishing for trout. The lakes will be closed for a few days following the stocking but will open Saturday morning of Fall Fest October 12th.

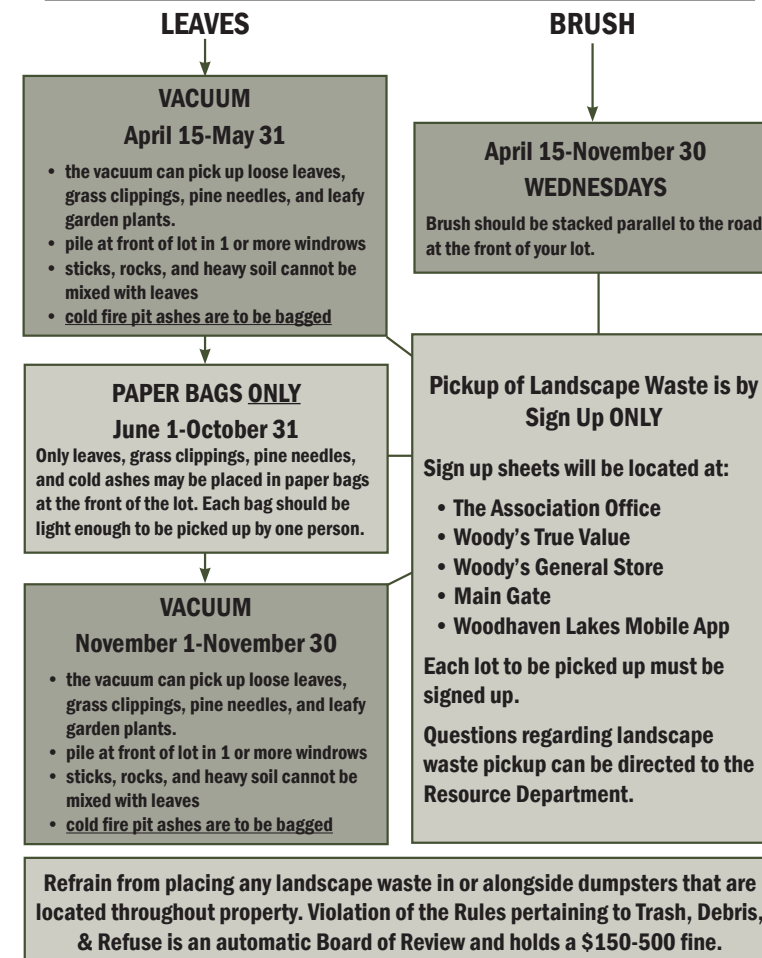
Additionally, we will be stocking Woodhaven Lake with approximately 250 lbs. of Walleye.

Albino Catfish Competition

Congratulations to Ann and Adrian Capp and Tim Simms for their amazing Albino Catfish! The Competition will conclude on September 30th. We have had a total of 6 Albino catfish catches this season! Get out there and get the catch of a lifetime.



LANDSCAPE WASTE LOT-to-LOT PICKUP PROCEDURE



DAILY CATCH LIMITS AND RULES - 2024

1. **Woodhaven Lake** - largemouth bass - harvest up to 3 fish under 12 inches and “Catch & Release” on fish 12 inches and greater.
2. **Bass Lake** - largemouth bass - harvest up to 3 fish under 12 inches and “Catch & Release” on fish 12 inches and greater.
3. **Pine, Sunset, Black Oak, Hidden & Bluegill lakes** - 1 largemouth bass/day, 14 inch minimum length limit.
4. **All Lakes** - 15 fish combined catch limit on bluegill and redear species.
5. **All lakes** - 15 fish limit on crappie
6. **All Lakes** - 4 fish limit on channel catfish.
7. **All lakes** - return grass carp to the lake
8. **All lakes** - No limit on common carp, bullhead, and green sunfish species.
9. **All lakes** - NO MINNOWS: using live minnows can introduce unwanted species/organisms into our lakes.
10. **No harvesting of turtles.** This is geared mainly towards snapping turtles in which populations have been declining in the State over the years due to overharvest.
11. **2 poles and line only in the water at a time for all the lakes on property.** With this restriction, anglers would be allowed to have multiple poles but only 2 lines in the water at a given time.
12. **No unattended fishing devices allowed at any time on any of the lakes.** Unattended devices can cause mortality to fish and turtles that should be released if undersize as well as interfere with boaters using the lakes.
13. **No trotline or jug fishing on any of the lakes.** Given our fisheries are recreational, I believe these devices are damaging to our fisheries and interfere with boaters using the lakes.

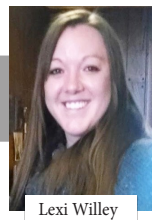
LEFFELMAN & ASSOCIATES INC.

HOW'S YOUR AGENT WORKING FOR YOU?
We are local, we know Woodhaven,
and we answer our phones!

See one of our park model and travel trailer insurance specialists today!



Mary Reglin



Lexi Willey



Lisa Quest



Julie Burkardt

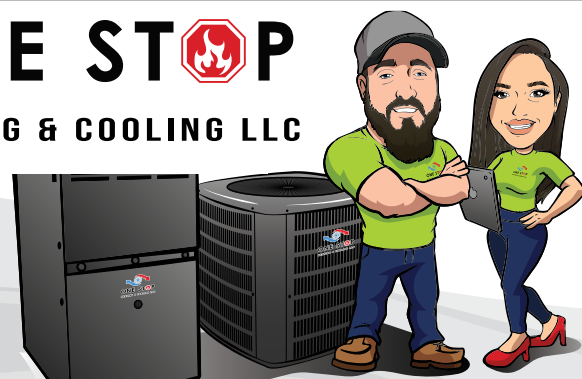
MOTOR HOME | PARK MODEL | TRAVEL TRAILER | RECREATIONAL VEHICLE | BOAT



815.849.5219 | 111 W MAIN ST. SUBLETTE, IL
LAMOILLE 815.638.2171 - AMBOY 815.857.2125
WWW.LEFFELMANASSOC.COM

Our Family Protecting Your Family

ONE STOP HEATING & COOLING LLC



Cold, Hot Or In Between? 24/7 Service

GET COZY WITH US IN JUST A CALL!

309-472-4924
OR
815-503-9473



Located At 601 N Inlet Road,
Sublette IL 61367

WWW.TR-SALES.COM
SALES@TR-SALES.COM
815-849-9089

OVER 50 NEW LSVs READY FOR THE CAMPING SEASON!

CONTACT US ABOUT INFORMATION ON WINTER STORAGE



705 Illinois Ave. Mendota, IL 61342

815-539-5142

Over 39 Years Experience

WE HAVE COMPLETED OVER 300
ROOFS IN WOODHAVEN ALONE!



NILSROOFING.COM
AUTHORIZED CONTRACTOR. NRCA • BBB

Roemmich Resort Homes

1867 Tower Road, Sublette, IL 61367

www.roemmichresorthomes.com--815-849-5577

We Make Camping...Home!



Woodland Park-Parkmodels
Room Additions-Decks-Sheds-Driveways
Water, Sewer & Electric Extensions
Winterizing

Is it time to buy or upgrade your
Woodhaven property?



Deb Schultz or Zac Lehn
NMLS 719170 NMLS 1593736
Call 815-894-2386
or apply online at
www.northcentralbank.com



WOODY'S PIZZA PLUS



FINAL DAY FOR
FOOD SERVICE
WILL BE SUNDAY
OCTOBER 13TH.
THANK YOU FOR A
GREAT 2024
SEASON!

WOODY'S GENERAL STORE & RESTAURANT

BAKERY & DELI - FROZEN FOODS - LOTTERY
CAMPING & PICNIC SUPPLIES - CLOTHING & HATS

BEER • WINE • LIQUOR

815-849-5189

CATERING:
PICK UP OR DELIVERY!
815-849-5189

CAMPSTOVE RESTAURANT OCTOBER HOURS:

FRIDAY - SUNDAY 8 AM-11 AM
MONDAY - THURSDAY CLOSED

CLOSED AFTER 10/13 FOR THE SEASON



PIZZA PLUS:
815-849-5197

GENERAL STORE OCTOBER HOURS:

FRI. 10/4 & SAT. 10/5	8 AM-8 PM
SUNDAY 10/6	8 AM-1 PM
FRI. 10/11 & SAT. 10/12	8 AM-8 PM
SUNDAY 10/13	8 AM-3 PM
FRIDAY 10/18 & 10/25	3 PM-8 AM
SATURDAY 10/19 & 10/26	8 AM-4 PM
SUNDAY 10/20 & 10/27	8 AM-1 PM
CLOSED AFTER 10/27 FOR THE SEASON	

PIZZA PLUS OCTOBER HOURS:

FRIDAY & SATURDAY	11 AM-7 PM
SUNDAY 10/6	11 AM-1 PM
SUNDAY 10/13	11 AM-2 PM
MONDAY-THURSDAY	CLOSED
CLOSED AFTER 10/13 FOR THE SEASON	

ERBES Realty LLC

Over 40 Years Experience

1922 Tower Road, Sublette, IL 61367

www.Erbes-Realty.com



<p>Lori Erbes, GRI Designated Managing REALTOR®/Owner 815-535-6295 lorierbes@erbesrealty.com</p>	<p>Marcia Kosowski REALTOR® 815-582-2381 mkosowski@erbesrealty.com</p>	<p>Tiffany Vanous REALTOR® 815-915-9353 tiffanyvanous@erbesrealty.com</p>	<p>Tonja Greenfield REALTOR® 815-761-3220 tgreenfield@erbesrealty.com</p>	<p>Mark Schuemann REALTOR® 815-677-6698 markschuemann@erbesrealty.com</p>	<p>Julie Grell REALTOR® 815-590-6724 juliegrell@erbesrealty.com</p>
---	---	--	--	--	--

ERBES Realty LLC

Over 40 Years Experience

1922 Tower Road, Sublette, IL 61367

www.Erbes-Realty.com



Lori Erbes, GRI
Designated Managing REALTOR®/Owner
815-535-6295
lorierbes@erbesrealty.com

Marcia Kosowski,
REALTOR®
815-582-2381

Tonja Greenfield,
REALTOR®
815-761-3220

Tiffany Vanous,
REALTOR®
815-915-9353

Mark Schuemann,
REALTOR®
815-677-6698

Julie Grell,
REALTOR®
815-590-6724

 Sec 1, Lot 115 - \$65,000	 Sec 2, Lot 16 - \$57,000	 Sec 2, Lot 156 - \$12,000	 Sec 2, Lot 251 - \$45,000	 Sec 2, Lot 254 - \$39,900	 Sec 3, Lot 46&47 - \$60,000
 Sec 3, Lots 178&179 - \$55,000	 Sec 4, Lots 52-53 - \$88,000	 Sec 4, Lot 155 - \$29,000	 Sec 4, Lot 199 - \$22,900	 Sec 5, Lot 50 - \$92,000	 Sec 5, Lot 55 - \$45,000
 Sec 5, Lot 139 - \$35,000	 Sec 5, Lot 156 - \$39,500	 Sec 5, Lot 158 - \$44,700	 Sec 5, Lot 432 - \$48,000	 Sec 5, Lot 485 - \$39,000	 Sec 5, Lot 515 - \$82,500
 Sec 6, Lot 7 - \$25,000	 Sec 6, Lot 74 - \$16,500	 Sec 7, Lot 82 - \$45,000	 Sec 7, Lot 187 - \$26,000	 Sec 8, Lot 7 - \$75,000	 Sec 8, Lot 91 - \$19,000
 Sec 8, Lot 92 - \$95,000	 Sec 9, Lot 6 - \$19,900	 Sec 9, Lot 8 - \$25,000	 Sec 9, Lot 63 - \$19,999	 Sec 9, Lot 73 - \$19,900	 Sec 9, Lot 74 - \$42,000
 Sec 9, Lot 128 - \$29,500	 Sec 9, Lot 201 - \$54,000	 Sec 10, Lot 19 - \$62,900	 Sec 10, Lot 133 - \$29,500	 Sec 10, Lot 181 - \$119,000	 Sec 11, Lot 119 - \$51,000

 Sec 11, Lot 168 - \$16,000	 Sec 12, Lot 23 - \$39,500	 Sec 12, Lot 29 - \$19,900	 Sec 12, Lots 58-59 - \$96,000	 Sec 13, Lot 52 - \$44,500	 Sec 13, Lot 89 - \$27,000
 Sec 13, Lot 100 - \$40,000	 Sec 14, Lot 17 - \$28,500	 Sec 14, Lots 61&62 - \$35,000	 Sec 14, Lot 92 - \$18,500	 Sec 15, Lot 130 - \$32,000	 Sec 15, Lot 184 - \$55,800
 Sec 16, Lot 107 - \$66,500	 Sec 17, Lot 44 - \$66,590	 Sec 17, Lot 77 - \$119,900	 Sec 17, Lot 158 - \$69,000	 Sec 17, Lot 164 - \$24,500	 Sec 18, Lot 100 - \$39,000
 Sec 21, Lot 154 - \$29,000	 Sec 22, Lot 39 - \$34,900	 Sec 23, Lot 48 - \$89,900	 Sec 24, Lot 22 - \$68,500	 Sec 25, Lots 2-3 - \$91,000	 Sec 25, Lot 89 - \$39,900
 Sec 25, Lot 90 - \$29,900	 Sec 26, Lot 120 - \$21,000	 Sec 26, Lots 181/182 - \$69,900	 Sec 26, Lots 235&236 - \$74,500	 Sec 28, Lots 93&94 - \$77,000	 Sec 28, Lot 122 - \$24,000
 Sec 28, Lot 123 - \$24,000	 Sec 29, Lot 153 - \$28,000	 Sec 29, Lot 200 - \$28,900	 Sec 2, Lot 55.....SOLD	 Sec 3, Lots 154-155.....PENDING	 Sec 4, Lot 123.....SOLD
			 Sec 4, Lot 68.....SOLD	 Sec 5, Lot 37.....SOLD	 Sec 5, Lot 378.....PENDING
			 Sec 5, Lot 428.....SOLD	 Sec 6, Lot 73.....SOLD	 Sec 6, Lot 73.....SOLD
			 Sec 6, Lot 100.....SOLD	 Sec 10, Lot 144.....SOLD	 Sec 15, Lot 127.....PENDING
			 Sec 10, Lot 144.....SOLD	 Sec 15, Lot 127.....PENDING	 Sec 16, Lot 194.....SOLD

****Property status is as of September 1, 2024****

View our newest listings on our website!

October is a beautiful time of year to watch the colors of nature change into reds, oranges, golds, and purples. The nights get cooler, and the days are a perfect temperature (most of the time). October is also the month that the Nature Center winds down the end of the season. We'll be closed for the winter starting in November, but staff will still be working hard to plan for 2025! We've already started on our gameplan for entertaining programs, interactive exhibits and displays, fun activities, creative crafts, and so much more. Look forward to next season at the Nature Center!



October at the Nature Center: October is a wonderful time to enjoy the outdoors and watching nature as it prepares for the upcoming winter season. This month is your last chance to visit the Nature Center for the season, so stop by during the weekends. We'll continue to offer a new craft every weekend throughout the month along with celebrating Fall Fest Weekend!

Fall Fest Weekend – October 12-14

The Nature Center will be hosting a variety of activities and fun over the three-day weekend. The final Farmer's Market of this season will be held only on Saturday, October 12th from 10 a.m.-3 p.m. so make sure to stop by and stock up on your favorite goodies to make it through the winter! The Nature Center will also have another great craft available all weekend, along with a native seed giveaway (while supplies last). Watch the [Leisure Times](#) for more details about what other fun will be taking place!

Nature Center Farmers Market | ONLY Saturday, October 7
Nature Center open hours | Basket Giveaway at 3 p.m. Sunday

Stop by the Nature Center Yard to pick up some of your favorite food goodies! We plan to have jams, honey, mustard, pastries, kettle corn, fruits, veggies, plants, and more, weather permitting. Farmer's Market Basket Giveaway: Sign-up on Saturday only for your chance to win a basket of goodies from the Farmer's Market vendors. Please only ONE entry per lot. Winners will be announced at the Nature Center on Saturday 3 p.m. Those not present will be notified via phone and must pick up at the time the call is made, or another winner is immediately drawn. Basket must be picked up by 3:45 p.m., or a new winner will be selected.

Nature Nuggets: Let's take a closer look at local nature!

This month we'll focus on a plant species that appears in the autumn: Pumpkins (*Curcubita* spp) which are a type of winter squash native to the southwestern United States and northern Mexico. They are among the oldest domesticated plants. Archaeological evidence shows several different species of pumpkins were domesticated between 4,000 and 10,000 years ago. Modern-day pumpkins are quite different from the wild ones that were small, bitter, and gourd-like. As pumpkins were domesticated, they became larger, sweeter, and tastier.



While pumpkins were not native to Illinois as a wild plant, they have become an important crop for the central part of the state. Illinois is the top producer of pumpkins, producing around 41% of the US crop in recent years. In 2022, this was 634,000,000 pounds of pumpkins! California and Texas are the runners up with only 7.5% and 7.3% of the yield, respectively.

Central Illinois, around the Peoria area, is where the bulk of Illinois pumpkins are grown. Pumpkins like hot, dry weather and well-drained soil. While Illinois does produce jack-o-lantern pumpkins, it mostly produces smaller, sweet varieties known as sugar pumpkins that are traditionally used for pies (up to 80% of pumpkin production).

Pumpkins grow from sprawling vines with yellow fruit-bearing flowers. The Cucurbitaceae family includes pumpkin, squash, zucchini, and ornamental gourds.

What do I do with my decorative pumpkins after the holidays? Recycle them! Don't waste space in a landfill with a pumpkin, instead compost it in a designated compost pile. If you have whole, uncarved pumpkins you'll want to chop them up to speed up decomposition. Next year, use the compost in your garden! If you don't have your own compost pile, ask your municipality if you can recycle your pumpkin at a yard waste site or compost facility. If the pumpkins are still fresh and not rotting, check with a local zoo or wildlife rehab center that might be able to use the pumpkins for enrichment. Whatever you do, dispose of your old pumpkins properly. Remove all decorations, do not leave them along the road, and don't feed rotten pumpkins to animals.



Fun fact: Pumpkins are actually a fruit! Morton Illinois is the 'Pumpkin Capital of the World' and home of Libby's pumpkin factory.

NATURE CENTER HOURS:

- Saturday, October 5: 10:00 a.m. – 3:00 p.m.
- Sunday, October 6: 10:00 a.m. – 2:00 p.m.
- Saturday, October 12: 10:00 a.m. – 3:00 p.m.
- Sunday, October 13: 10:00 a.m. – 2:00 p.m.
- Monday, October 14: 10:00 a.m. – 2:00 p.m.
- Saturday, October 19: 10:00 a.m. – 3:00 p.m.
- Saturday, October 26: 10:00 a.m. – 3:00 p.m.

firststatebank.biz | 800.362.9623

EXPLORE
your checking account options
with First State Bank

- FSBPremier
- FSBChecking
- FSBPlus Checking

FIRST STATE BANK



401 N Pennsylvania Ave
Sublette, IL

815-849-5532
countryvillagemeats.com



Your Local Butcher Shop

Fresh Cut Steaks, Chops, and Ribs
Grill Ready Marinated Beef, Pork, Chicken, Seafood
Bratwurst, Bacon, Jerky, Meat Sticks

Hours:
M-F: 8am-5pm | Sat: 8am-4pm
Winter Hours Begin Oct. 26:
Mon-Fri: 8am-5pm
Sat: 8am-12pm
Closed Sunday

Subscribe to our Sublette & Geneva, IL Newsletters at
countryvillagemeats.com

Stock Up On CVM Favorites!

ROSATTI'S
Authentic Chicago Pizza
MyRosatis.com

MENDOTA

• 815.538.3838 •
801 6TH STREET
Located in Downtown Mendota

Dine-In • Full Sports Bar • Outdoor Patio Seating

TALL BOY BUSCH LIGHTS \$3.50 EVERYDAY!
DAILY SPECIALS & FRIDAY HAPPY HOUR STARTING @ 3PM

OVER \$960,000 WON HERE IN 2023!

Play SLOTS!

Woodhaven Lakes Exclusive!

15% OFF

~~10% OFF~~

Any Order of \$25 or More

Valid at Rosatti's of Mendota only. Must mention coupon when ordering. Not valid with other coupons/offers/specials/ discounts or Alcohol. Limited Time Offer.

WOODY SAYS.....

Don't forget! All passes left at the gate will be moved down to the Association Office December 1st



WOODY *True Value* HARDWARE

Advertised Bargains and Hours of Operation are for October Only

OCTOBER

Mon.-Sat: 8 a.m.-4 p.m.

Sunday: 8 a.m.-3 p.m.

Glass Cutting | Propane
Fax | Copier | Shipping
Keys Cut
Gasoline | Gift Certificates

Rentals:

Floor Care | Weed Eaters
Appliance Dollies | Spreaders
Leaf Blowers
Pressure Washer

BARGAINS OF THE MONTH®



SAVE 35% OR MORE

79.99
Vacmaster® Professional Beast Series™
5 gal. 5.5 Peak HP Wet/Dry Vac R 248 910



SAVE 45% OR MORE

17.99
First Alert® Plug-in Carbon Monoxide Alarm E 248 182



SAVE 30% OR MORE

7.99
Great Stuff® 12 oz. Window & Door Foam Sealant with Smart Dispenser™ P 253 327



4.99
Sta-bil® 10 oz. Fuel Stabilizer H 100 526



SAVE 35% OR MORE

12.99
YOUR CHOICE Green Thumb®
22 in. Lawn & Leaf Rake or 32 in. Poly Leaf Rake T 146 483; 683 964



SAVE 55% OR MORE

6.49
Tomcat® 16-pk. Refillable Mouse Killer Station L 136 136



9.99
20 lb. Multipurpose Mix Wild Bird Food L 501 272



3.99
YOUR CHOICE GE®
4-pk. Soft White A19 LED Bulbs E 120 669, 670

Consumer responsible for taxes. While supplies last. Products, product availability, pricing and savings may vary by store. See your local store for details.

TV-AD-7060633830 TU

WOODY TrueValue Hardware
815-849-5107

Just off Woodhaven Drive in Section 9
Or off property at 1802 Sublette Rd, Sublette



Sale ends 10/31/24

©2024 True Value Company LLC

Find the right products for your project at your local True Value®.

We have a full line of treated and non-treated lumber for interior or exterior projects!



Looking for places to shop and play while you stay? visitleecountyil.com



815-849-5476

Please call for an appointment

Monday-Saturday 8:30 a.m.-4:30 p.m. | Sunday CLOSED

View available properties: woodhavenassociation.com | realtor.com | zillow.com | trulia.com

NEW

2/292	\$120,000
5/373	\$31,500
7/35-6	\$47,000
11/116	\$47,000
12/28	\$18,900
14/28	\$14,000
16/140	\$18,000
16/200	\$45,900
21/249	\$51,200
24/141	\$35,000
24/236	\$48,900
26/241 -2	\$47,900
27/13	\$29,900
27/33	\$55,000
28/6	\$39,900
29/255	\$35,000

1/50	\$49,900
2/124	\$19,000
2/141 -2	\$114,900
2/151	\$25,900
2/210	\$37,500
3/236	\$34,900
4/104	\$17,000
5/6	\$26,500
5/10	\$47,900
5/23	\$39,900
5/154	\$37,900
5/176	\$55,000
5/382	\$25,900
5/458	\$85,000
6/132	\$41,900
6/172	\$48,000
7/72	\$75,000
7/109	\$57,500
7/140	\$49,000
8/53	\$24,000
9/91	\$24,000
10/91	\$10,000
11/126	\$34,900
11/159	\$35,500
11/160	\$17,900
11/321-2	\$120,000
13/39	\$59,900
14/57	\$29,500
16/158	\$42,000

16/159	\$19,000
17/168	\$25,000
19/35	\$16,500
20/81	\$48,900
21/7	\$63,900
21/24	\$13,950
21/235	\$19,500
22/10	\$79,900
22/27	\$96,500
22/91	\$32,000
23/86-7	\$65,000
25/9	\$32,500
25/37	\$29,900
25/95	\$45,000
25/126	\$48,000
26/30	\$32,500
27/88-9	\$79,500
27/152	\$29,900
28/34	\$18,000
28/136	\$29,900
29/182	\$44,000
29/234	\$36,900
29/250	\$16,500
29/361	\$17,500



CLOSED

1/9	16/194
1/31	19/80
2/55	20/16
2/56	21/72
2/76	21/205
2/83	24/248
6/73	26/25
7/129	26/60
10/119	26/192
11/14	27/85
12/25	29/319
16/3 & 4	

Reduced | Contingent/Pending

Information Last Updated 9/14/24



Mary Lovgren
 Realtor® Broker
 815-994-1449
maryelovgren@gmail.com



Sal Bayron
 Realtor® Broker
 312-952-3409
salvadorbayron@gmail.com
 Se Habla Español



Justin Wiley
 Realtor® Broker
 815-849-5390
JWiley@woodhavenassociation.com

Bonita Willis | ABR,ePRO, C2EX, AHWD, Designated Managing Broker

