

Make A Pinecone Mouse

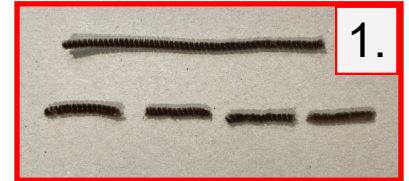


Pinecone Mouse Directions

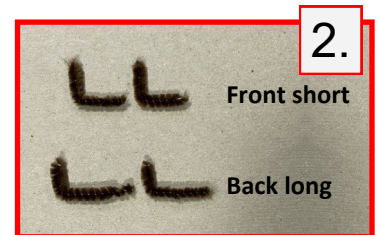
Materials: Pinecone, 2.5" piece black yarn, 1 pipe cleaner (brown/tan), small piece construction paper (brown/tan), 2 wiggle eyes, pencil, tacky glue, and scissors

Directions:

1. Cut pipe cleaner in half. Put one piece to the side. Now to make some feet. Take other pipe cleaner piece and cut in half. Cut those two pieces into half again to create four equal pieces (1.5").



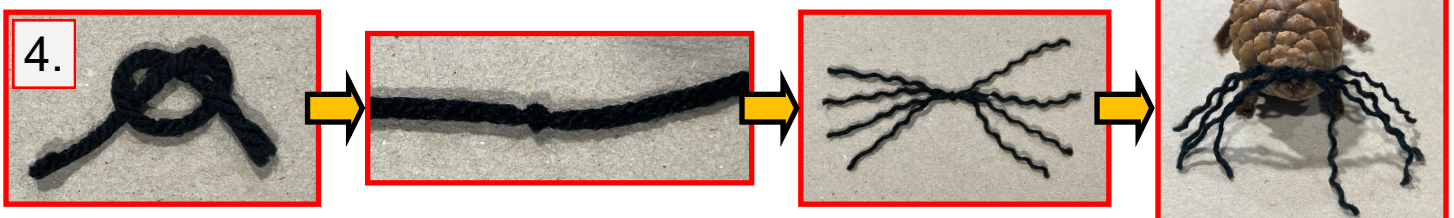
2. Fold the feet pieces into 90 degree angles. Mice have longer back feet, so we made ours with two long feet and two short feet.



3. Glue feet into pinecone. Using the pointed end as the face, follow the picture for feet layout.



4. Work on mouse face starting with the whiskers. Take the piece of black yarn and make a knot in the middle. Then unravel both ends of yarn. Glue to pointed end of pinecone at the tip. Cut the ends if too long.



PLEASE LEAVE DIRECTIONS ON TABLE ~ THANKS, WH NATURE CENTER



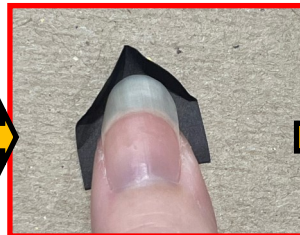
5. Glue wiggle eyes on pointed end of pinecone.



6. Using the other half of pipe cleaner (6") we'll make the tail; curl slightly and glue into the open end of pinecone.



7. Create the ears with the small piece of construction paper. Remember, mice have big ears! After cut, to give them some shape, bend the tops in. Then glue near the face.



8. Your mouse is complete! Just make sure he doesn't eat too much cheese!



PLEASE LEAVE DIRECTIONS ON TABLE ~ THANKS, WH NATURE CENTER