

# Make a Paper Plate Polar Bear



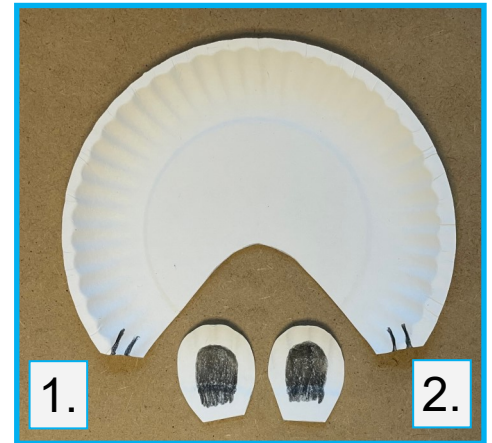


# Paper Plate Polar Bear Directions

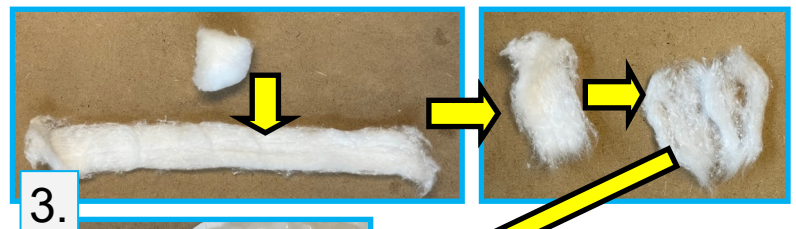
**Materials:** small paper plate, white paper, full sheet blue paper, black pompom, wiggle eyes, cotton balls, colored pencils, glue, & scissors

## Directions:

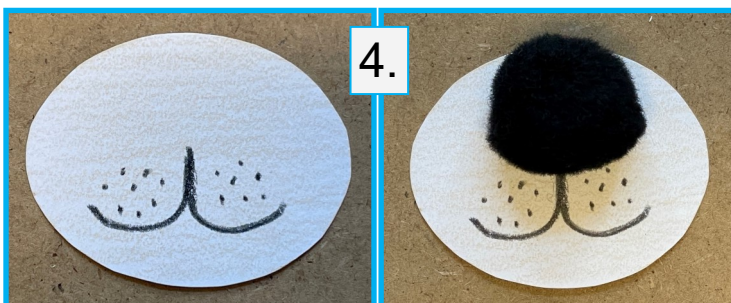
1. Cut out body and ears from the paper plate, following the lines.
2. Using black colored pencil, draw toes and black on ears.



3. Take **two** cotton balls and unroll, tear into pieces, and pull apart. Glue the cotton pieces to the body of the bear. Set aside to dry.



4. Work on the head. Start with the medium white oval/circle. Color this circle with tan or light black to give some depth to the face. Use the black colored pencil to draw a mouth and spots that represent whiskers. Glue black pompom on for a nose. Glue this circle onto the large circle near the bottom.



5. Glue the ears onto the top back side of the large circle.

the large circle. Glue eyes onto the face.





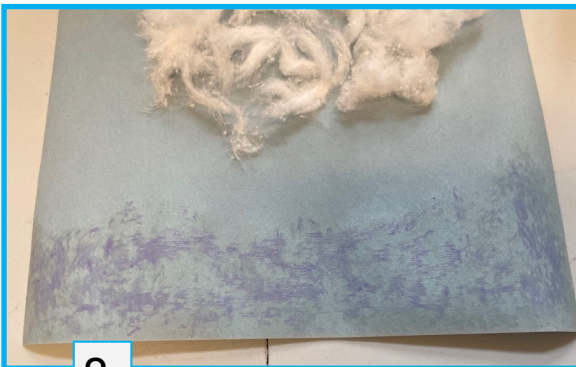
6. Glue the smallest white paper circle to the back of the plate near the top for the tail.



7. Set the bear aside to start drying, and start the background.



8. Pull apart one cotton ball like before and use the **stick glue** to attach the 'snow' towards the bottom of the blue sheet of paper.



9. Glue bear onto the background just above the snow. Use **stick glue** to attach the snowflakes to the sky.



10. Use your polar bear picture to decorate for the winter!

