

WOODHAVEN NEWS

JUNE '23 | VOL. 40 NO. 5



WHATS INSIDE:

Management Report
pgs. 3-4

Recreation & Activities
pgs. 16-20

Resource News
pgs. 26-28

PRESIDENT'S MESSAGE



I am happy our season has begun. We are officially past Spring Fling and looking forward to our next big holiday, which is Memorial Day! Although the weather for Spring Fling was not ideal, it was good to see so many Property Owners out there enjoying Woodhaven!

Our next Board of Directors' meeting will be on May 27th at Woodhaven. Please take an hour or so to attend so you can learn about what is happening at Woodhaven. One of the topics to be voted on that day is E-bike usage at Woodhaven. The Board would love to see your smiling faces in attendance that day.

Clean-up after the March 31st tornado is moving along well. I have seen lots cleaned up and replacement trailers on them already, which is so great to see. This process will continue to evolve throughout this summer and into the fall.

The Deer Management AdHoc Committee will begin meeting by the end of the month. This committee will be meeting as much as needed throughout the summer to bring back as much information as possible to the Board and Owners so we can make the right decisions concerning such an important topic.

Remember, whenever you are not sure what is allowed in Woodhaven, contact the Association Office and get an accurate answer instead of opinions on Facebook!

Let's all enjoy our summer at Woodhaven!

Daniel Rossi,

Board of Directors President

- 1 **President's Message**
- 3-4 **Management Report**
- 5 **WLRI Residential Properties for Sale**
- 7 **Trail Map**
- 10-11 **Board News & Meeting Schedules**
- 12 **Citations/Violations | Section Reps.**
- 13 **New Property Owners**
- 14 **Restricted Materials Procedures**
- 16-19 **Recreation & Activities**
- 20-21 **Aquatics Facilities Hours & Rules**
- 22 **Flag Etiquette**
- 23 **ESAC Corner**
- 26-28 **Resource News**
- 32 **WLRI News**
- 34 **The Naturalist Corner**
- 35 **Woody True Value Bargains of the Month**
- 36 **Woodhaven Lakes Realty Lots for Sale**

Woodhaven News
 509 LaMoille Road, P.O. Box 110
 Sublette, IL 61367
 815-849-5209

Copy & Advertising Deadline: First of each month. No issue in February.

Woodhaven News (USPS001-073) is published monthly except February by Woodhaven Association, 509 LaMoille Road, Sublette, IL 61367, as an official source of information for Woodhaven Association members. Subscription price is \$2.25 per year included in annual assessment.

Periodicals postage paid at Sublette, Illinois and additional mailing offices.

Postmaster: Send address changes to Woodhaven News, P.O. Box 110, Sublette, IL 61367-0110.

The Woodhaven News disclaims any liability for any advertisements published herein and in no way endorses or guarantees these ads. It also reserves the right to reject any ads submitted.

Letters to the Editor: All letters must be signed, names may be withheld upon request. Please limit letters to 200 words. Woodhaven reserves the right to refuse publication of any letter in the interest of space or objectionable content. Issues must be of interest to a large portion of Woodhaven and will not express personal conflicts or grievances.

For inquiries regarding the Woodhaven News, or to submit a letter to the editor: NLeffelman@woodhavenassociation.com

ASSOCIATION OFFICE/ESAC

Monday - Saturday | 8:30 a.m.-4:30 p.m.
 Sunday | 10 a.m.-2 p.m.

WOODHAVEN LAKES REALTY

Monday - Saturday | 8:30 a.m.-4:30 p.m.
 Sunday | 10 a.m.-2 p.m.

REC PLEX

Daily | 10 a.m.-10 p.m.

FAMILY CENTER

Daily | 11 a.m.-7 p.m.

WOODY'S GENERAL STORE

Friday & Saturday | 8 a.m.-9 p.m.
 Sunday | 8 a.m.-3 p.m.
 Mon.,Wed.,Thurs., | 8 a.m.-4 p.m.
 Tuesady | CLOSED
 Friday 6/30 | 8 a.m.-10 p.m.

CAMPSTOVE RESTAURANT

Sat. & Sun. | 8 a.m.-11 a.m.
 Monday - Friday | CLOSED

LAKEVIEW

Daily | 7 a.m.-Dusk

PLEASE CHECK THE ONLINE FACILITY HOURS CALENDAR AT WWW.WOODHAVENASSOCIATION.COM/FACILITY-HOURS FOR MOST UP-TO-DATE SCHEDULES

PIZZA PLUS

Friday & Saturday | 11 a.m.-8 p.m.
 Sunday | 11 a.m.-2 p.m.
 Mon.,Wed.,Thurs., | 11 a.m.-1 p.m.
 Tuesday | CLOSED
 Friday 6/30 | 11 a.m.-9 p.m.

NATURE CENTER

Saturday | 10 a.m.-5 p.m.
 Sun.,Mon.,Wed.,Thurs.,Fri. | 9 a.m.-3 p.m.
 Tuesday | CLOSED

BAIT SHOP

Friday & Saturday | 7 a.m.-7 p.m.
 Sun.,Mon.,Wed.,Thurs. | 7 a.m.-3 p.m.
 Tuesday | CLOSED

WOODY'S TRUE VALUE

Monday - Saturday | 8 a.m.-5 p.m.
 Sunday | 8 a.m.-3 p.m.

LAUNDROMAT

24 hours

IMPORTANT PHONE NUMBERS

| | |
|--|--------------|
| Association Office Main Number | 815-849-5209 |
| Public Safety Main Gate | 815-849-5915 |
| Woodhaven Lakes Realty | 815-849-5476 |
| ESAC | 815-849-5371 |
| General Store. | 815-849-5189 |
| Service Center | 815-849-5107 |
| Woodhaven Utilities. | 815-849-5718 |
| Lee County Treasurer | 815-288-4477 |
| Lee County Recorder | 815-288-3309 |



Aside from our beautiful natural resources—the lakes, trees, and wildlife—you, the Property Owners, your families, and guests are Woodhaven's greatest assets. And arguably, just as important to the vitality of Woodhaven is our staff. We are exceptionally confident in and proud of the people we work with because they genuinely care about Woodhaven and take extreme pride in their work. When we reach spring and early summer, our adrenaline and focus run high because we want to make certain Woodhaven's facilities and common areas are clean and beautiful and our programs and services are planned, polished and ready for your arrival for the season. While we are by no means perfect, we feel that, for the most part, we annually accomplish these goals.



Woodhaven's workforce currently consists of 76 full-time, year-round employees, which balloons to slightly more than 200 employees, including both seasonal and full-time, during the recreation season between April and September. Naturally, just as we see a small turnover of Property Owners from season to season, we also must hire new employees every year to fill the gaps by those who have left from previous years. Our seasonal workers are vital to the smooth operation of Woodhaven because they are typically the ones on the front lines. They have the most direct contact with you while serving you ice cream at the RecPlex, cashiering and packing your groceries at the General Store, and coordinating the



myriad of recreational activities and events throughout the season.

A philosophical statement we subscribe to is, "It takes a minimum of two years, whether a new Property Owner or employee, to develop more than a surface-level understanding of how Woodhaven operates." A seasonal employee at the RecPlex may explicitly know the functions of that facility, including hours of operation, what kind of ice cream is in stock, and how much it costs for four to play mini golf; but also might display a "deer in headlights" look if you ask where on property you can dispose of an old refrigerator from your trailer.

With that in mind, we ask you to please be patient as we work through the training of all our newbies this, and every, season. Our department and facility managers do a wonderful job of educating and training, but it still takes time and effort, usually while a new employee is thrown right into the fire of a summer Woodhaven weekend! Even though both new, and even experienced, employees might not readily know an answer to every question thrown at them, they recognize and have the resources available to get those answers. They are trained to do their best to get you an answer even if they don't know it off-hand or direct you to the most qualified department or staff member to help you. And the tools they most often use for Woodhaven information are the same ones available to you as an Owner.

The best, most reliable way to get an answer to any general question you have about Woodhaven is to directly call or stop in the Association Office. If you have a question, comment or concern

that is not time-sensitive, Woodhaven's Speak-Up Sheet program is a great resource. Speak-Up Sheets can be found on Woodhaven's website and on the mobile app and are designed exclusively for Property Owners. If requested, you will receive a response to your questions or comments from an appropriate staff member. Additionally, all Speak-Up Sheets are reviewed by the Board of Directors and Communications Committee, and if a specific topic pattern is seen, further communication and information may be developed for all Owners when warranted.

If you have questions about facilities hours or program and event times and places, the digital calendar on either the website or mobile app is the place to go. During the summer season when on property enjoying all Woodhaven has to offer, the *Leisure Times* has a list and description of events and happenings specific to that weekend. Woodhaven's Facebook page is a great resource for up-to-date information, especially when scheduling changes are made due to weather or other unforeseen circumstances. If you download the mobile app from either the Apple Store or Google Play Store to your phone, we'll send you notifications of these situations, including fire bans, as well.

And the very publication you are currently reading, the *Woodhaven News*, is a great resource to learn about association business, departmental news, Woodhaven projects, budget information, and board actions. There is also an Owners-only password protected portion of our website that archives many of the past committee and board meeting minutes and discussions, association business forms, along with a deep-dive into Woodhaven's financial information for you to explore. And if you really want to get the pulse of what your Board of Directors is discussing, attend a Board meeting in person or watch one streamed live on our YouTube channel. We urge you to check out all our information sources and if you need any further information or clarification, please don't hesitate to call us.

Tornado Cleanup and Future Reforestation Plans

If you have not been to Woodhaven yet this season, your first trip down the hill on Woodhaven Drive past the Lakeside/Lakeview area will reveal some notable changes thanks to the 2023 early spring tornado. More than 50 mature trees in this area were destroyed by the storm and removed, making that area look, well... barren. Additionally, an estimated 400 mature trees were lost in all Woodhaven common areas and another 1,200 on lots. While these are not insignificant numbers, and the loss of any number of mature trees from our forest is heartbreaking, it pales in comparison to the estimated 5,000 trees lost from the 2015 tornado.

Moving forward, we are currently in the preliminary stages of developing a comprehensive reforestation plan to help establish and ensure a healthy and vibrant forest for generations to come. As our Resources Department moves through this process, more information will be available.

Lakeside Building Closed Until Further Notice

As the oldest structure on property, the Lakeside Building, formerly known as "Hermit's Hut," was originally built as a hunting cabin that pre-dates the establishment of Woodhaven in 1971. Early on in Woodhaven's history, it was used by the developers as a Sales Office where the Realtors would meet potential buyers, start property tours, and complete lot sales closings. For many

years following, it was home to the ESAC Department before the current Administration Building was completed in 2000. While not considered a result of the recent tornado, during visual inspections of the Lakeside Building, structural concerns with the roof and interior ceiling were noted. Unfortunately, we don't have a timeframe for re-opening and expect it to be closed for an extended period as further evaluations and discussions are completed. The two public computers and printer have been moved to the Laundromat Lounge area for use. As always, when using these computers, please limit your time if others are waiting. Also, due to the new setup and how the computers interact with the network, only the computer on the right can send documents to the printer. There are still several outlets and tables available to use your personal laptop in this area.

Fishing Limit Changes

Speaking of Woodhaven's natural resources, we have recently made some changes to the fish catch limits on Woodhaven and Bass Lakes due to an imbalance of largemouth bass populations specific to these two bodies of water. Effective immediately, the following limits are in effect:

Woodhaven & Bass Lakes – Largemouth bass 12 inches and over – "Catch and release" only.

Largemouth bass 12 inches and under – Three (3) per day.

On all other lakes, anglers can keep one (1) largemouth bass per day with a 14-inch minimum length limit. Additionally, bluegill and redear sunfish catch limits have been adjusted on all lakes to 15 fish combined per day. New fishing limit signs will be placed at all lakes with all new fishing limit regulations. A good idea is to take a photo with your phone of these new signs or of the fishing information found on page 28 of this issue of the Woodhaven News, so you always have the regulations and requirements with you.

Also know although Woodhaven Lakes is private property, fishing licenses are REQUIRED for all anglers 16 years of age and older. Fishing licenses can be purchased at Woody's Bait Shop and expire on March 31 every year. This season's staff and an Illinois Conservation Officer will be patrolling the lakes and asking anglers for fishing licenses, and ensuring catch limits are followed. Anyone fishing Woodhaven's lakes without a license may be subject to both Woodhaven and State of Illinois citations and fines, which will add up to far more than the cost of a yearly license.

Staff Orientation and Training

Because we really do take employee communication and training very seriously, all facilities will be closed until 1:00 p.m. on Thursday, June 8 for our annual all-staff orientation. We will send out reminders on the mobile app and our Woodhaven page as we get closer to the date.

We sincerely hope you and your family have a wonderful, relaxing, memorable, and "sweet" 2023 season at Woodhaven, and are confident that all our staff, both experienced and new, will help provide an environment that allows that for you.


Gene's Lawn Service

Retaining Walls, Patios, & Walkways
Landscaping | Tree Trimming
Mulching | Mowing
Power Washing
Spring Clean Up | Fall Clean Up

815-671-1542 | gls8794@icloud.com

JLS Insurance Agency
815-434-4475
REPLACEMENT COST COVERAGE
AVAILABLE ON MOST UNITS
ASK ABOUT A DISCOUNT IF YOU ARE AGE 50

REPRESENTING -  **FOREMOST**
INSURANCE GROUP

 **Woodhaven News Classified Ad Request**

We will run your personal classified ad for \$5 per monthly issue (40 words Max.)
Mail this form to:
Classified Ads, Woodhaven News, P.O. Box 110, Sublette, IL 61367
**The deadline to place a classified ad is the 1st of the month prior to the issue desired*
**All ads must be prepaid*
**Businesses may not place classified ads*
Please run this ad for the months of: _____
Amount enclosed: \$ _____



SHADY OAKS
COUNTRY CLUB

815-849-5424
Located just off US Rt. 52
One mile North
of Green Wing Rd.

JUNE

| | |
|---|---------|
| 3rd Veterans Play Day | 9:00 AM |
| **Course closed. Call to register a team** | |
| 4th Men Round One Qualify (RR/LH) | 7:30 AM |
| **Members only. Tee times after ** | |
| 11th Men Round One Qualify (RR/LH) | 7:30 AM |
| **Members only. Tee times after ** | |
| 25th 75 and Over Scramble | 8:00 AM |
| **Open to anyone with a certified handicap. Sign up in clubhouse** | |
| 26th North Route Seniors | 9:00 AM |
| **Course closed until 1:30pm. Call to sign up** | |
| 26th North Route Seniors | 9:00 AM |
| **Course closed until 1:30pm. Call to sign up** | |
| 29th Ag in the classroom | CLOSED |
| **Course closed until 1:30pm** | |
| 30th Miller Memorial Golf Outing | 8:00 AM |
| **Course closed all day** | |

2023 Summer rates May 1 - Sept 5, 2023

WITH Woodhaven Discount:

- Weekday 9 holes \$13, 18 holes \$19
- Weekend 9 holes \$18, 18 holes \$29

These prices include cart. MUST have Woodhaven pass to get the discount.

KIDS 13 & UNDER PLAY FREE!*

Loaner Clubs are Available! Parents accompanying young children can pay 3-hole (\$5) and 6-hole (\$7) rates! No Other Discounts Apply to this Special. *with paying adult*

LIVE VIDEO GAMING

Club House Hours
Weekdays: 7:00 AM - Dusk | Weekends: 6:00 AM - Dusk

Visit us at www.shadyoaksc.com to schedule tee times and check the event calendar! Like us on Facebook!



815-849-5476

Please Call for an Appointment
Monday-Saturday | 8:30 a.m.-4:30 p.m.
Sunday | CLOSED
Saturday | 10 a.m.-2 p.m.

Last updated: 5/11/2023

Bonita Willis - ePRO, C2EX, Designated Managing Realtor®

Mary Lovgren - Realtor® Broker
815-994-1449 | maryelovgren@gmail.com

Nicci Leffelman - Realtor® Broker
815-501-0408 | NLeffelman@woodhavenassociation.com

Justin Wiley - Realtor® Broker
815-849-5390 | JWiley@woodhavenassociation.com

2532 Johnson St.



West Brooklyn

This charming home sits on a corner lot closely located to downtown West Brooklyn. The home offers 4 bedrooms with the master bedroom on the first floor and a one car detached garage. Recent updates including- new flooring and paint throughout the home and the bathroom updated. The front porch and backyard also offer great space for spending time with friends and family or just enjoying the fresh air. Call for a showing today! **\$124,000**

415 W Cherry St.



Compton

This listing offers a cozy 3 bedroom 1.5 story home on a corner lot. Great starter home or investment! Newer furnace, AC and metal roof installed. Also included with the home is a detached concrete block building. **\$96,000**

Listings available at: woodhavenlakes.com | realtor.com
zillow.com | trulia.com

They say spring comes in like a lion and goes out like a lamb...but we know better here at Woodhaven. This year in particular, it seems spring came in with a vengeance and hasn't let up. If it was a bright sunny day, there were 30+ mph wind gusts, and if we didn't have wind, we had rain.

Sometimes it feels like we have daily fire bans; just when you think it's finally a day there couldn't possibly be a fire ban, there are rolls of thunder in the distance, making your plans for a cozy fire obsolete.

It may seem odd to receive the dreaded "fire ban in place" notification from the Woodhaven Lakes app even during a rain-storm, or maybe you've wondered why there *hasn't* been a fire ban on a breezy day. Public Safety utilizes a short, but not limited, list of criteria for issuing a fire ban. The following guidelines are used when determining when to issue a fire ban:

1. Any wind advisory, warning, or red flag warning issued by the National Weather Service.
2. Sustained winds of 20 mph or greater.
3. Wind gusts 30 mph or greater.
4. Drought conditions.
5. A combination of the above, or other extenuating circumstances.

Once Public Safety determines a fire ban needs to be put in place, notifications are sent internally to staff, posted at facilities, sent through the app, and posted to our Facebook page.

A fire ban restricts the following:

1. Building a campfire in any manner.
2. Smoking a pipe, cigar, or cigarette outdoors (it is legal to smoke in a vehicle equipped with an ashtray).
3. Throwing matches, ashes, or burning materials from a vehicle.
4. Burning combustible materials in any or all restricted areas.

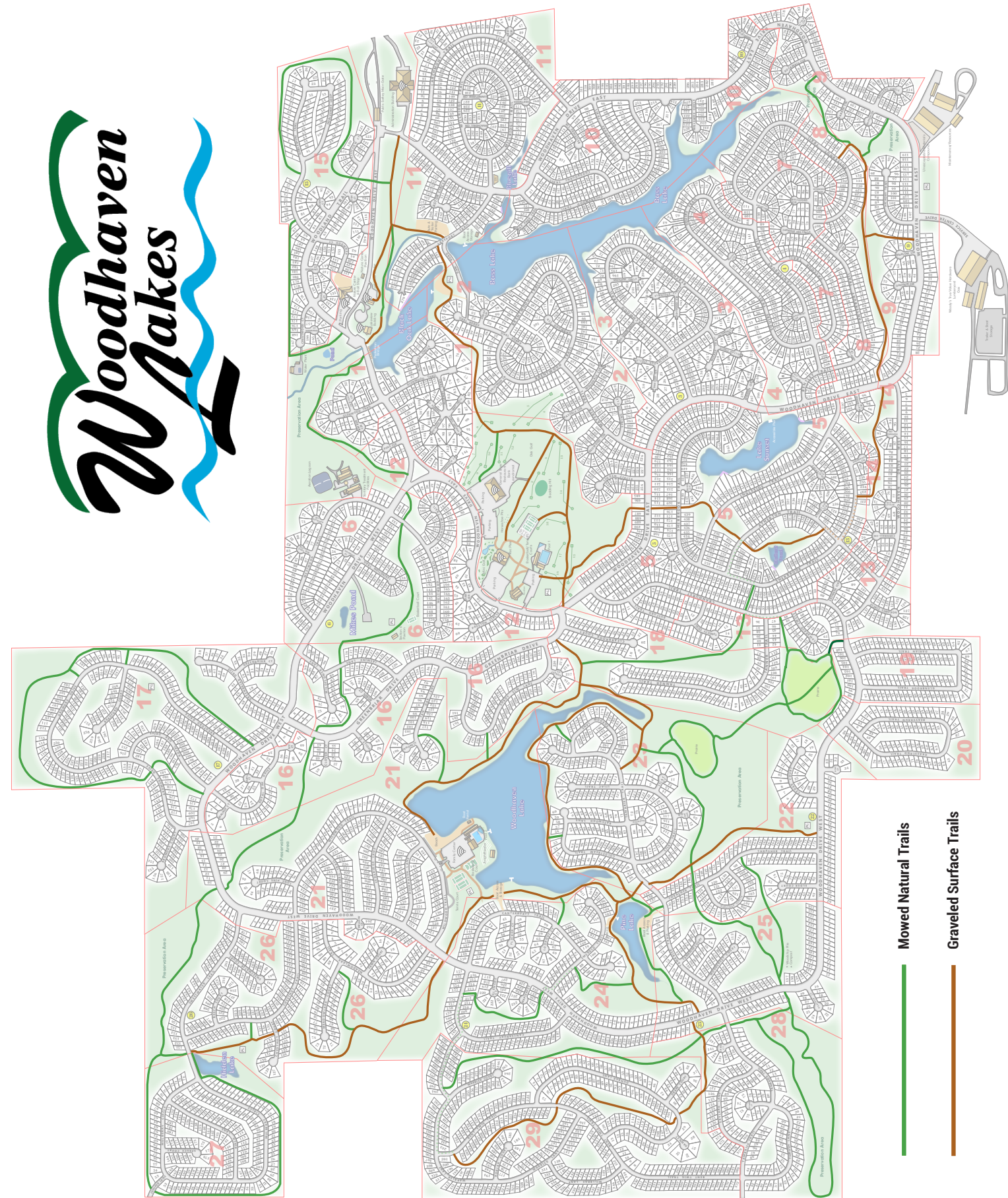
As always, please enjoy your campfires responsibly and always have a water



WOODY SAYS.....



Take a Hike!
Trail Maps are available in the app and at the Association Office and Nature Center.



* A trail map with more details can be found on the Woodhaven Lakes App

Small, Simple Improvements Can Equate to Better Emergency Responsiveness

When a major catastrophic event strikes a community, what most often emerges is a strong sense of teamwork, camaraderie, and compassion amongst community members. Such has definitely been the case at Woodhaven. But what also comes to light are areas in which need improvement so the community is better prepared for future emergency situations.

At Woodhaven, one of the things that became apparent very quickly following the 2015 tornado was a large number of Woodhaven's original individual property addresses, which are the Section and Lot numbers, were deteriorated beyond readability or completely missing. This made it difficult through the initial search and recovery process for emergency responders to quickly and readily identify Sections and Lots.

When Woodhaven was developed back in the early 1970s, individual lot numbers were placed on the electric pedestals in 2-inch orange and black vinyl numbers with adhesive backing.



Original Section Numbers Located on Electric Pedestals

As can be expected through 40 plus years of being subjected to Illinois weather, many are faded, deteriorated or missing altogether.

Yes, many Property Owners have beautiful, handcrafted signs indicating the Section and Lot, and those are great. But, when it comes to emergency situations, consistency is the key. Emergency responders need a consistent place to help identify properties and it has been determined the best place for this is where the developer placed the original property numbers—on the electric pedestals.

Woodhaven's Communications Committee is once again asking for each individual Property Owner's help. Please take a few minutes to check the numbers on your pedestal to ensure they are affixed to the pedestal; they are legible (from the road, if possible); and they are the correct identifying numbers. Many pedestals are located in areas on lots where numbers may not be seen from the road; however, it is still important for emergency responders walking the property to know they can still find a



Here is the pedestal with the refreshed numbers and the Section identified in the middle. The section numbers are 3-inch vinyl reflective and the lot numbers are 2-inch vinyl reflective. These were purchased at Woody's True Value Hardware Store.

Section and Lot on the electric pedestal for easy identification.

If you find your Section and Lot numbers are missing from the electric pedestal or need refreshing, these 2-inch vinyl reflective numbers can be purchased at Woody's True Value and at most hardware or home improvement stores. At Woody's, the 2-inch numbers are .89 cents each and the 3-inch numbers are .99 cents each. Remember, the bigger the better!

One item of note, the developers did not place Section numbers on the pedestals, only Lot numbers. The Communications Committee is asking that Property Owners who refresh or replace missing numbers also include the Section numbers on the pedestals. This is especially important in areas where it can be difficult to determine what Section a responder is in.

For a nominal cost to each Property Owner, replacing the Section and Lot numbers on each property's electric pedestals can go a long way in greatly improving emergency efforts and efficiency in future situations.

HHT of Illinois
Construction Services 20+ Years

Roofing | Custom Decks | Room Additions

Winterizing | Spring Clean Ups

Inspections | Maintenance | Gravel Pads | Driveways

815-849-4240
Visit us on Facebook to see our work!
Major Credit Cards Accepted

LEFFELMAN
& ASSOCIATES INC.

HOW'S YOUR AGENT WORKING FOR YOU?
We are local, we know Woodhaven,
and we answer our phones!

See one of our park model and travel trailer insurance specialists today!

Mary Reglin | Lexi Willey | Lisa Quest | Julie Burkardt

MOTOR HOME | PARK MODEL | TRAVEL TRAILER | RECREATIONAL VEHICLE | BOAT

Trusted Choice®
815.849.5219 | 111 W MAIN ST, SUBLETTE, IL
LAMOILLE 815.638.2171 - AMBOY 815.857.2125
WWW.LEFFELMANASSOC.COM

Our Family Protecting Your Family

UNILOCK AUTHORIZED DEALER

facebook

Anne's
garden center

DELIVERED & INSTALLED

3 TREES FOR \$600.00

One Year Warranty ♦ Staked & Mulched

Huge Selection Of
Garden Art & Gifts!

1200 N. Galena Ave. Dixon, IL ♦ 815.288.6060

JIMENEZ CONSTRUCTION SERVICES

Hector Jimenez - General Construction & Carpentry

Phone: (815)535-6345 | Email: jconstruction8240@gmail.com

Quality Construction - Honest Service - Reliable For Everyone

Se Habla Español - Fully Insured

- General Construction
- Retaining walls
- Carpentry
- Roofing
- Painting
- Window/screen repair
- Power washing

WE MAKE BANKING EASIER
SO YOU CAN ENJOY MORE TIME WITH
FAMILY AND FRIENDS

1 FIRST STATE BANK

firststatebank.biz • 800.362.9623

SnK Electric

815-570-7196
25+ years experience
Lic.# 1862 & 197

Service Upgrades
New & Old Work
Meter Pedestals
Violations Corrected
Trenching
Water & Sewer Extensions
& More!

BOARD ACTION REPORT

The following actions were taken or reported by the Board of Directors at their April 11th, 2023 Meeting.

Full meeting minutes will be posted to the Members tab on our website after approval at the April 25th meeting.

1. Motion was made to approve the March 28, 2023 – Board of Directors' Meeting Minutes. Motion passed unanimously.
2. Motion was made to approve the March 28, 2023 – Board of Director's Executive Session Minutes. Motion passed unanimously.
3. Motion was made to purchase a mowing tractor for a cost of \$38,593.78 from Johnson Tractor. Motion passed unanimously.
4. Motion was made to purchase 2 new vans for janitorial for a cost of \$45,999.00 per van from Prescott Brothers. Motion passed unanimously.
5. Motion was made to purchase a portable pressure washer for a cost of \$11,024.70 from Northern Tool. Motion passed unanimously.
6. Motion was made to install a PA system at both pools and beach area for a cost of \$11,329.28. Motion passed unanimously.
7. Motion was made to approve the resolution to amend the Rules and Regulations. Motion passed unanimously.
8. Motion was made to approve the removal of electronic equipment by Republic Services for the material type per unit rate. Motion passed unanimously.

The following actions were taken or reported by the Board of Directors at their April 25th, 2023 Meeting.

Full meeting minutes will be posted to the Members tab on our website after approval at the May 27th meeting.

1. Motion was made to approve the April 11, 2023 – Board of Directors' Meeting Minutes. Motion passed with 5 ayes and 1 abstention.
2. Motion was made to approve the April 11, 2023 – Board of Director's Executive Session Minutes. Motion passed unanimously.
3. Motion was made to pave the open market walk path for a cost of \$47,000 by Everlast Blacktop. Motion passed unanimously.
4. Motion was made to seal coat RecPlex and Pool 1 parking lots for a cost of \$20,993 by Porter Brothers. Motion passed unanimously.
5. Motion was made to increase the company credit card limit to \$500,000. Motion passed unanimously.
6. Motion was made to purchase a 2-door refrigerator for a cost of \$4,339.25 from Restaurant Supply. Motion passed unanimously.
7. Motion was made to purchase a hydrovac machine for a cost of \$18,000 plus sales tax from TJS Excavating. Motion passed unanimously.

THE COMMUNICATIONS COMMITTEE

...encourages Owners to review the Pool Rules on pg. ##

...reminds Owners to follow the rules of the road when biking and bicycling – walk single file against traffic; bike single file with traffic

...encourages Owners to Take a Hike! Trail maps are available in the app, at the Association Office and the Nature Center.

Roemmich Resort Homes

1867 Tower Road, Sublette, IL 61367

www.roemmichresorthomes.com--815-849-5577

We Make Camping...Home!



Woodland Park-Parkmodels
Room Additions-Decks-Sheds-Driveways
Water, Sewer & Electric Extensions
Winterizing

BOARD & COMMITTEE MEETINGS

*Meetings are subject to change, please check our website to view the most up-to-date schedules before attending a meeting.

Please see the online Event Calendar for details. Board meeting agendas will be posted to Facebook prior to each meeting.

| JUNE | | |
|------|--|------------|
| 3rd | Facilities Planning Committee Meeting, Woodhaven | 11:00 a.m. |
| 17th | Communications Committee Meeting, Woodhaven | 8:00 a.m. |
| 17th | Finance Committee Meeting, Woodhaven | 8:30 a.m. |
| 17th | Section Reps Meeting, Woodhaven | 9:30 a.m. |
| 24th | Board of Directors' Meeting, Woodhaven | 9:00 a.m. |
| JULY | | |
| 8th | Facilities Planning Committee Meeting, Woodhaven | 11:00 a.m. |
| 15th | Communications Committee Meeting, Woodhaven | 8:00 a.m. |
| 15th | Finance Committee Meeting, Woodhaven | 8:30 a.m. |
| 15th | Section Reps Meeting, Woodhaven | 9:30 a.m. |
| 22th | Board of Directors' Meeting, Woodhaven | 9:00 a.m. |

Meeting Location: Northern Illinois University
Naperville Conference Center
1120 E. Diehl Rd. Naperville, IL 60563



815-849-5451

Fishing & Hunting | Bait & Tackle | Snacks
Bottled Water & Soda | Night Crawlers | Shrimp
Wax Worms | Trout Worms | Chicken Liver

JUNE HOURS

Sun, Mon, Wed, Thurs, 7AM - 3PM

Friday & Saturday.....7AM - 7PM

Tuesday CLOSED

SUNCOAST TRAILER SALES

574-594-9000 / 800-434-7330

7839 E. 250 S. PIERCETON, INDIANA

"We Won't Be Beat On Price"

Website: www.SuncoastRvTrailerSales.com

PARK MODELS / RV DESTINATION TRAILERS

\$78,995 FM 0000-23 \$84,595 FM 9055-23 \$74,995 FM 0076-23



SPECIALS FREE DELIVERY TO WOODHAVEN

MIDWEST LARGEST PARK MODEL DISPLAY

Woodhaven's Honor Roll of Veterans

We are continuing to seek the names of Woodhaven Property Owners and their immediate family who are US veterans or active duty. We will be adding to the list we compiled in 2019 and 2020 - if you submitted your info already, we will continue to include you. The Association would be honored to post these names in the *Woodhaven News*. You can fill out the form and return it to the Association Office, online [here](#) or you can send us a message through Facebook. We will continue to accept submissions and publish the list annually.

Thank you for your time and thank you for your service to our country!

Woodhaven's Honor Roll of Veterans

Name: _____

Section: _____ Lot: _____

Branch of Military: _____

Wars Served or Peacetime: _____

Additional Information: _____

Robeson RV Repair

General Contractor

Trailer Relocation/Releveling, Sewer Extensions,
Electrical, Plumbing, General Maintenance, Winter Watch,
Power Washing, Rubber Roof Repairs & Replacements, Skirting

WINTERIZING AVAILABLE!!!

815-830-1082



T & R SALES

Park Model Homes & Destination Trailers



Located At 601 N Inlet Road, Sublette IL 61367
(Kelly Hicks Former Location).

WWW.TR-SALES.COM | Sales@Tr-Sales.com CALL: 815-849-9089

ESAC CITATIONS - APRIL

| Sec/Lot | Violation |
|---------|---|
| 1/115 | Gravel patio less than 5' from 115/116 line; fence along driveway |
| 1/143 | Post for NEMA3 deteriorated; tape on RV window; inapp. storage |
| 2/23 | RV awning damaged |
| 2/143 | RV seams open; floor of RV tip-out falling |
| 3/104 | RV pad retaining wall deteriorated; bldg mat - blocks |
| 3/177 | Extension cord plugged in; damaged/open sewer; damaged door |
| 4/22 | Shed siding separating; hole/rotten wood on shed; bldg materials |
| 4/120 | Block and timber fence lining driveway |
| 4/191 | Building materials - fire pit blocks |
| 5/157 | Building materials - landscape timbers |
| 5/210 | PVC pipes running into shed; inapp storage - florescent bulbs |
| 5/266 | Exposed wire at NEMA3; tape on RV awning; bldg mat - blocks |
| 6/117 | RV cord buried; damaged trim on shed; shed door not closing |
| 7/25 | Open below room door; bldg mat - 4x4 posts, screen, timbers |
| 7/197 | Deck permit expired; no railing, loose boards; RV seam open |
| 8/26 | Loose patch on RV skirting; skirting separating; bldg materials |
| 9/20 | RV awning damaged |
| 9/103 | Shed door not closing; damaged shed shingles; bldg materials |
| 9/111 | Building materials - pallets, blocks, lumber |
| 10/25 | Bldg materials - blocks, railing, railroad ties, lattice |
| 10/81 | Loose face plate in meter box; bldg mat - platform, timbers |
| 10/247 | Rotten wood on soffit and roof trim of screen room |
| 11/191 | Hole in shed door |
| 11/240 | Interior switch under overhead; tape on outlet; rotten wood |
| 14/90 | Exposed wire under overhead; tape on outlet; skirting missing |
| 14/91 | Extension cord plugged in; exposed outlet; shed door not secure |
| 16/17 | Exposed outlet on RV; bldg mat - lumber; inapp. storage |
| 16/89 | Rotten wood on walk-thru between RV and room |
| 16/151 | RV less than 7' from 151/150 line; trampoline in out lot |

PUBLIC SAFETY CITATIONS - APRIL

| Sec/Lot | Owner/Guest | Offense |
|---------|-------------|---|
| 6/140 | Owner | Second RV Violation |
| 7/79 | Owner | Second RV Violation |
| 14/52 | Guest | Speeding 32 mph in a posted 20 mph zone |
| 26/101 | Guest | Theft of property |
| 29/334 | Owner | Speeding 30 mph in a posted 20 mph |

REGISTERED SEX OFFENDER LIST

Robert Hipshur-Sec. 21, Lot. 33
William Dubois-Sec. 17, Lot. 122-123

| Sec/Lot | Violation |
|---------|---|
| 17/3 | Shed less than 5' from 3/2 line |
| 17/84 | RV seams open; bottom trim missing from RV door |
| 17/288 | Glass used to repair RV window not properly installed |
| 18/11 | Tape on room window; rotten wood on shed; unsecure shed |
| 18/12 | Shed wall separating; door hinge broken; RV seam open |
| 19/33 | Open in face plate of meter box; rotten wood on overhead |
| 19/53 | No permit for portable overhead; SMV registration exp 7/31/22 |
| 20/35 | No permit for gravel; hole in RV window |
| 20/71 | RV seam open; building materials - blocks |
| 21/184 | Building materials - plywood, lattice |
| 21/221 | Broken window on RV; exposed wire out of ground |
| 21/271 | Exposed wires on RV and NEMA3; NEMA post broken; bldg mat |
| 22/123 | Exterior sink not connected to sewer |
| 24/122 | Unacceptable wood patch over rotten wood on overhead |
| 25/145 | RV seam open; bottom trim missing from door; AC cover damage |
| 26/145 | Exposed wire/tape on conduit; no face plate; no cap on sewer |
| 26/161 | Damaged outlet on ground |
| 26/244 | Holes/rotten wood on shed; shed roof deteriorated |
| 27/59 | Window on RV not secure; inapp storage-refrigerator, piano |
| 27/72 | No permit for hot tub; tarps on ground |
| 27/76 | Shed less than 5' from rear and side lines |
| 27/164 | Glass on sliding door broken; deteriorated boards on ret wall |
| 28/45 | Awning on RV roof |
| 29/128 | Inapp storage - interior chair, open/damaged cooler |
| 29/224 | Fire pit over Lot 22/out lot line |
| 29/345 | Hole/rotten wood on RV; damaged RV trim; RV skirting missing |
| 29/346 | Damaged/missing shed shingles; bldg mat - blocks, timbers |

OBITUARIES

Theresa "Terry" Miller-Flynn, 62, died unexpectedly at home on April 14, 2023. Terry was born on November 11, 1960, in Chicago, to Mary (Marks) Guzik. Terry worked as Assistant Manager at Senese Winery and Comedy Club for 4 years until the day they closed and remained friends with Tommy Senese and Bill Brady, the owners. Later in life Terry graduated with a bachelor's degree in Medical Transcription and was Valedictorian. At the time of her death, she was employed as the Receptionist for ALCO. Terry referred to all of them, as her work family.

On January 15, 2005, she married the love of her life, Keith Martin Flynn. They loved camping, traveling, going to the Wolves Games and being with friends and family. Terry was an avid reader. Terry and Keith were season ticket holders for the Chicago Wolves. She was member of the Loyal Order of the Moose, Member Auxiliary of American Legion, and she was a member of her homeowners' association. Keith and Terry are in Section 9 Lot 128

SECTION REPRESENTATIVES & ALTERNATES

| SECTION | REPRESENTATIVE | ALTERNATE |
|------------|-------------------|-------------------|
| Section 1 | Nancy Nieslawski | Alex Esparzal |
| Section 2 | Pat Sirbas | Jane Elliott |
| Section 3 | Maria Dellegrazio | Judy Gonzalez |
| Section 4 | Gregg Swanstrom | Pamela Smith |
| Section 5 | Marcia Kosowski | Diane Koepfel |
| Section 6 | Michael Flanigan | Pat Winters |
| Section 7 | Karen Larson | Lee Patterson |
| Section 8 | Linda Smith | Mary Muir |
| Section 9 | Jack Meyers | |
| Section 10 | Bob Palatine | Tony Lona |
| Section 11 | Dawn Anama | Rose Galarza |
| Section 12 | Heather Hansen | |
| Section 13 | Shannon Eaden | Jeff Eaden |
| Section 14 | Jeraldine Elliott | |
| Section 15 | Nancy Jackson | Elaine Ayres |
| Section 16 | Ernest Mitchell | Jenice Pepoon |
| Section 17 | Jose Navarro | Darlene Singleton |
| Section 18 | Rosemary Colness | Joanne Lencki |
| Section 19 | | |
| Section 20 | Anthony Sarullo | Mike Connelly |
| Section 21 | Todd Moffett | Shaunta Stocking |
| Section 22 | Kathy Brush | Kim Gibas |
| Section 23 | Brenda Kriss | Rita Olsen |
| Section 24 | Laurie Picha | Phyllis Sippel |
| Section 25 | Ryan Davidson | |
| Section 26 | Angel Flores | |
| Section 27 | Charlene Hill | |
| Section 28 | | |
| Section 29 | Chris Pontrelli | Patrice Riemann |

WELCOME NEW PROPERTY OWNERS - APRIL

"Welcome" new Woodhaven Property Owners and families. Please stop at the Association Office and pick up your new Membership packet.

| Sec/Lot | Name | City/State |
|---------|----------------|----------------|
| 5/256 | ROY IMWIE III | ADDISON IL |
| 10/293 | KALA LIEBERENZ | BOLINGBROOK IL |
| 11/315 | MICHAEL DAVIS | DEKALB IL |

K&P GRASS CUTTERS

**PUSH MOWING SERVICE
SPRING CLEAN UP**

MONDAY - THURSDAY

**LEAVE MESSAGE & LOT # FOR
ESTIMATE & REPLY**

773-250-0920




Licensed Wildlife Control, LLC



Beaver • Raccoon

Groundhogs • Bats

Skunk • Moles • and More!

Art Albee

815.857.3989 | 815.535.2882 | artalbee@hotmail.com | Amboy

LOOKING FOR SOMETHING FUN TO DO?

**ENCOUNTER THE FUN EXPECTED
IN LEE COUNTY ILLINOIS!**



Scan for more info

UPCOMING EVENTS

June 1-30 • For the Love of Animals Art Display
KSB COMMERCE TOWERS
DIXON

June 11 • Ashton Lions Club 34th Car Show & Committee Craft and Vendor Fair

June 3 • River Country-Country Concert
DIXON RIVERFRONT

ASHTON-FRANKLIN CENTER
JR/SR HIGH SCHOOL

June 10 • Rosbrook Street Fair
107 S. PEORIA AVE.
DIXON

June 17 • Dixon PrideFest
PAGE PARK, DIXON

June 30-July 4 • Dixon Petunia Festival

Watch for Lee County Tourism's ad every month to find places to go & things to do all summer!

LeeCountyFun.com

815-288-1840

@leecountyillinois

@leecountyfun



401 N Pennsylvania Ave
Sublette, IL

815-849-5532

COUNTRY VILLAGE MEATS

Subscribe at our website for our newsletter to learn more about store specials and news.
countryvillagemeads.com

Summer Hours:
Mon-Fri: 8am-5pm
Sat: 8am-4pm

Steaks cut for perfect grilling and tasty eating!

RESTRICTED MATERIALS PROCEDURES

In order to provide Owners a way to dispose of restricted items in the refuse industry, we have provided roll off dumpsters at the Maintenance Shop; dumpsters are accessible 24/7. Please make note of limits and pricing. Items that have a fee will need to be paid for at the Association Office prior to being taken to the dumpsters. *Updates to this process will be published in future Woodhaven News.*

Materials we will accept

Appliances(white goods): Refrigerators, freezers, ranges, water, heaters, air conditioners, and humidifiers; **1 per lot**
Electronics: laptops/monitors/keyboards; **3 per lot, \$5 per item**

TVs: 1 per lot, \$25

Microwaves: 1 per lot, \$5

Propane Tanks: 20 pound cylinders only; **1 per lot**

Concrete: We will accept a wheelbarrow-sized load or smaller

Furniture: We will accept all furniture unless it is determined to be a health hazard; **3 per lot**

Metals: Large; **1 per lot** | Small; **5 per lot**

Large - lawn mowers, grills, swing sets, patio sets

Small - lawn chairs, lawn ornaments, bird feeders

Construction/Demolition Debris: we will only accept small amounts, for example, a wheelbarrow-sized load; **limit 1 load per lot**, or bring extra loads at a cost of \$5.00 per wheelbarrow load. The material must be clean, no nails, spikes, staples, etc. Property Owners are required to obtain their own container from a waste hauler for construction or demolition projects generating larger amounts of debris.

Materials we will NOT accept

Hazardous chemicals: paint thinner, turpentine, herbicides, pesticides, fertilizers, etc- contact your local recycler

Liquids of any kind: anti freeze, fuels, etc – contact your local O'Reilly's, AutoZone, or car service center

Oils: motor oil, vehicle lubricants, cooking oils, etc- contact your local O'Reilly's, AutoZone, Tire/Lube Center

Unsolidified paint: Oil based: contact your local recycler, Latex: cat litter or paint hardener to solidify (available at Woody's True Value)

Tires: Contact your local tire dealer

Batteries: Contact your Home Depot, Staples, etc.

Fluorescent bulbs: contact your local Home Depot, Lowes, or Battery Plus Bulbs center

Any of the above items that are brought to the drop-off will be marked by staff so their origin can be identified if found in an outlot or in or near a garbage container.

NOTICE

UNACCEPTABLE MATERIALS AT THE LANDFILL

DO NOT DISPOSE OF THE FOLLOWING ITEMS IN THE GARBAGE CONTAINERS:

- Appliances •Batteries
- Hazardous Chemicals- Paint thinner, turpentine, mercury, etc.
- Oils- Vehicle lubricants/fluids, undrained filters, etc.
- Full Paint Cans
- Landscape Waste
- Construction Debris- Roofing material, block, lumber, railroad ties, etc.
- Electronic Equipment- Computers, TVs, monitors, printers, stereos, cell phones, etc.
- Liquids of any kind- AntiFreeze, fuels, etc
- Unsolidified Paint
- Tires
- Propane Tanks
- Fluorescent Lamps (contain mercury)
- Concrete

The above items listed, with the exception of construction debris, are NOT accepted in landfills. Those that may have construction debris will need to acquire an appropriate container suitable for these items from a disposal company. Please help the garbage haulers by cooperating so they can continue to provide the Association with efficient service.

***For safety, DO NOT put furniture of any kind in the containers**



WOODHAVEN GOODTIMERS SOCIAL CLUB *Steve Bell*

The Goodtimers are a social club that meets regularly over the summer on Monday evenings at the Rex-Plex from 6:30-8:30 PM. There is a brief meeting that goes directly into different themed events, during the months of June, July and August.

Some of the weekly events for members are:

- Arts & crafts
- Line dance night
- Ice cream social*
- Trivia night
- Birthday party night
- Sub sandwiches & BINGO*
- Easter celebration & egg hunt*
- Cornhole tournament
- Pizza night*
- Hawaiian Luau night (pot luck)
- End of year party*
- * designates members only events

Other special events include trips to Bally's Casino, Kentucky Derby night, mini golf tournament, movie party, and a bowling league.

Membership is only \$3 per year. Membership is required to participate in certain weekly activities sponsored by the club. Guests are permitted to attend most weekly events for \$3 per visit. All members and guests must be at least 21 years of age.

Hope to see you this summer!

VETERAN & FIRST RESPONDER PICNIC

VETERAN & FIRST RESPONDER PICNIC
SATURDAY JULY 5TH, 3 P.M.-10 P.M. | SECTION 6 PAVILION

Wear your gear (a shirt or a hat will do) and a chair, and join your fellow compatriots for an evening of fellowship camaraderie. We will supply the burgers and dogs, you bring your coolers and a side or dessert.

Deb Scultz
 VP / LOAN OFFICER
 mms # 719170

Cell 815-440-6708 | Office 815-894-2386 | dschultz@northcentralbank.com
 Apply Online 24/7 | Available for all your Lending Needs

Member FDIC www.northcentralbank.com

MENDOTA
COMPANION ANIMAL CENTRE

1701 13TH AVE
 RT. 251 NORTH
 MENDOTA IL, 61342

(815) 539-6601

WWW.MENDOTAVET.COM

Your Companion-Centered Family Veterinarian in the Country



RECREATION & ACTIVITIES

| MONDAY | TUESDAY | WEDNESDAY | THURSDAY | FRIDAY | SATURDAY | SUNDAY |
|---|---------|---|----------|-------------------------------------|--|--|
| MAY M T W Th F S Su 1 2 3 4 5 6 7 8 9 10 11 12 13 14 15 16 17 18 19 20 21 22 23 24 25 26 27 28 29 30 31 | | COFFEE HOUR Daily: 8 a.m.-10:30 a.m. at the Lakeview Building. | 1 | 2 | One Smart Cookie | |
| 5 | | | 6 | 7 | 8 | 9 |
| Water Fitness: P1 Pool 2 Closed | | Day Camp: Welcome Week | | Water Fitness: P1 Pool 2 Closed | | Family Movie Water Fitness: P1 Night Swim: P1 Aqua Zumba: P1 |
| 12 | 13 | 14 | 15 | 16 | Candy Castle | |
| Water Fitness: P1 | | Day Camp: Superhero Training Camp | | Water Fitness: P1 Night Swim: P1 | | FATHER'S DAY Kids' Fishing Derby Aqua Zumba: P1 |
| 19 | | 20 | 21 | 22 | 23 | |
| Water Fitness: P1 | | Day Camp: Mad Scientist | | Water Fitness: P1 Night Swim: P1 | | Lollipop Lane Board of Directors' Meeting 9am Woodhaven Family Movie Band: Chicago Latin Groove Water Fitness: P1 Night Swim: P1 Aqua Zumba: P1 |
| 26 | 27 | 28 | 29 | 30 | JULY M T W Th F S Su 3 4 5 6 7 8 9 10 11 12 13 14 15 16 17 18 19 20 21 22 23 24 25 26 27 28 29 30 31 | |
| Water Fitness: P1 | | Water Fitness: P1 | | Water Fitness: P1 | | Kids' Fun Run 5K/3K Packet Pick Up Water Fitness: P1 Night Swim: P1 |

CHILDREN'S DAY CAMP: JUNE - AUGUST

Woodhaven's Day Camp program is the perfect opportunity for supervised fun for kids ages 6-12. Sessions are every Tues., Wed., Thurs. 9 a.m.-3 p.m. from June 13 - August 3 at the Family Center. Sessions are \$10/day per child, or \$25/child per week, with available discounts for families with 3+ siblings. **Please bring a lunch for your child.** Light snacks and drinks will be available! Tons of games, crafts, special guests, special dress up days, & POOL TIME!!! Registration forms are available at the Association Office beginning Memorial Day Weekend.

SWIM LESSONS - JULY

We will again be offering Red Cross swim lessons this summer; for both children and adults. Children's lessons will be in two sessions: July 3-July 13 and July 17-July 27 on Mon., Tues., Wed., & Thurs. from 10-11 a.m. at Pool 2. Cost is \$40 per child, per session. Adult lessons will be July 3-July 7 only, at Pool 2; cost is \$30. Pre-registration is required and will be available starting Memorial Day Weekend at the Association Office.

Summer is finally here, and it's time to make the most of the warm weather and long days. Whether you're looking for new ways to stay active or just want to relax and enjoy the season, there are plenty of ways to kick off your summer at Woodhaven Lakes. These programs are designed to provide individuals of all ages with an opportunity to engage in recreational activities, learn new skills, and make new friends. Here are some fun ideas to get you started.

KIDS FISHING DERBY

This year our Fishing Derby will be on Sunday, June 18th! Head to the lake and throw out a line; you never know what you might catch! Goodie bags will be available for all participants, and prizes will be awarded to our top fishers! Whether it's the largest, smallest, or most unusual, everyone has a chance for a prize!

FRIDAY NIGHT LIVE

Back this summer is everyone's favorite Friday Night Live! These Friday events were such a hit that we had to do them again! Come enjoy the live music & drinks and enjoy the beautiful summer nights out by the lake!

- Friday, May 26th – Burn N Bush
- Friday, July 7th – John Piontek
- Friday, July 21st – Ben & Kate
- Friday, September 1st – Tim Ajster

DAY CAMP

Starts Tuesday, June 13th
Day Camp is our summer camp program offered weekly on Tuesdays, Wednesdays, and Thursdays throughout the summer for children ages 6-12. The program runs from 9 a.m.-3 p.m. and includes games, crafts, pool time, lunch, and more! With different themes each week, the children will always have something new and exciting to look forward to.

REC PLEX

Starting Memorial Day Weekend, the Rec Plex will be open from 10 a.m.-10 p.m. every day. Stop by and try some of the delicious Ashby's Ice Cream, and then stick around to enjoy some mini-golf! Make sure to check out the brand NEW arcade system! Don't have quarters; no need to worry! With the new arcade system set up, you can load your arcade card up at the kiosk and then swipe at each game. More info on this new swipe system will be available soon!

FAMILY FUN NIGHTS

Looking for something fun to do during the week? Join us for Family Fun Nights every THURSDAY throughout the summer! Each week we will offer a different game, challenge, or activity for participants of all ages! Each weekly activity will be listed in the Leisure Times, as well as the online calendar. We can't wait to create lasting memories with you all!

WOODHAVEN LAKES 2023 ENTERTAINMENT SCHEDULE



| | |
|----------------------------------|-------------|
| Good Clean Fun | May 27th |
| Blue Steel | May 28th |
| Moonshine Brothers All Star Band | June 17th |
| Chicago Latin Groove | June 24th |
| Wild Daisy | July 1st |
| Minus 55 | July 8th |
| Serendipity | July 15th |
| Off the Charts | July 22nd |
| Sealed with a Kiss | July 29th |
| Feel Good Party Band | August 5th |
| Whiskey Thunder | August 12th |
| St. Jupiter | August 19th |
| The Rockets | August 26th |
| Valius | Sept. 2nd |
| Anthem | Sept. 3rd |

EVENTS

| | |
|---------------------------|--------------------------|
| Cabin Fever | February 4 |
| Assessment Due Dates | Mar. 31, May 31, July 31 |
| Egg Celebration | April 1 |
| Spring Fling | April 29-30 |
| Memorial Day Weekend | May 27-29 |
| Bike Rodeo | June 4 |
| Independence Day Weekend | July 1-2 |
| 5K/3K | July 1 |
| Annual Golf Outing | July 15 |
| Tie Dye Party | July 16 |
| Anything That Floats Race | July 29 |
| Main Event Weekend | August 5-6 |
| Annual Membership Mtg. | August 27 |
| Labor Day Weekend | September 2-3 |
| Fall Fest Weekend | October 7-8 |
| Kids Halloween Party | October 21 |
| BooHaven 5K | October 22 |
| North Pole Express | Nov. 17-Dec. 15 |

AQUATICS

Facilities & Hours



Pool One

| Friday | Saturday | Sunday | Monday-Thursday |
|---------------------------------------|---------------|---------------|-----------------|
| Water Fitness (Aqua Zumba on Sundays) | | | |
| 10:00 - 10:45 | 10:00 - 10:45 | 10:00 - 10:45 | 10:00 - 10:45 |
| Open Swim | | | |
| 11:00 - 12:45 | 11:00 - 12:45 | 11:00 - 12:45 | 11:00 - 12:45 |
| 1:00 - 2:45 | 1:00 - 2:45 | 1:00 - 2:45 | 1:00 - 2:45 |
| 3:00 - 4:45 | 3:00 - 4:45 | 3:00 - 4:45 | 3:00 - 4:45 |
| 5:00 - 6:45 | 5:00 - 6:45 | 5:00 - 6:45 | 5:00 - 6:45 |
| Night Swim | | | |
| 7:00 - 8:45 | 7:00 - 8:45 | | |

* Max of 300 participants, Can register 48 hours in advance, max of 16 reservations/people per sec/lot. Reservations recommended not required.



Pool Two

| Friday | Saturday | Sunday | Monday-Thursday |
|---------------------|---------------|---------------|-----------------|
| Swim Lessons (July) | | | |
| | | | 10:00 - 10:45 |
| Open Swim | | | |
| 11:00 - 12:45 | 11:00 - 12:45 | 11:00 - 12:45 | 11:00 - 12:45 |
| 1:00 - 2:45 | 1:00 - 2:45 | 1:00 - 2:45 | 1:00 - 2:45 |
| 3:00 - 4:45 | 3:00 - 4:45 | 3:00 - 4:45 | 3:00 - 4:45 |
| Adult Swim (18+) | | | |
| 5:00 - 6:45 | 5:00 - 6:45 | 5:00 - 6:45 | 5:00 - 6:45 |

**Closed May 31-June 4 & June 6-10

* Max of 300 participants, Can register 48 hours in advance, max of 16 reservations/people per sec/lot. Reservations recommended not required.



Beach

| Friday | Saturday | Sunday | Monday-Thursday |
|---------------|---------------|---------------|-----------------|
| Open Swim | | | |
| 11:00 - 12:45 | 11:00 - 12:45 | 11:00 - 12:45 | 11:00 - 12:45 |
| 1:00 - 2:45 | 1:00 - 2:45 | 1:00 - 2:45 | 1:00 - 2:45 |
| 3:00 - 4:45 | 3:00 - 4:45 | 3:00 - 4:45 | 3:00 - 4:45 |
| 5:00 - 6:45 | 5:00 - 6:45 | 5:00 - 6:45 | 5:00 - 6:45 |

* Max of 400 participants, Can register 48 hours in advance, max of 16 reservations/people per sec/lot. Reservations recommended not required.

**Aquatics Hours applicable Memorial Day Weekend - Labor Day Weekend

AQUATICS FACILITIES - RULES AND REGULATIONS

POOL 1 & POOL 2 - GENERAL RULES

- Children under the age of ten(10) must be supervised by someone four-teen(14) yrs. old & up OR an adult if determined by staff.
- Bathers with any contagious disease or infectious condition are not allowed in the water.
- Bathers with open cuts or abrasions are not allowed in the water.
- Proper swimming attire is required in the pool. Swimsuits must have a proper lining; no cut-offs, no shorts without lining, no bra's /training bra's.
- Children who are not toilet trained must wear a swim diaper.
- Only clean footwear, baby strollers, and wheelchairs are allowed on the pool deck and in the bathhouse.
- Only clean swim shoes are allowed in the water.
- All bathers are encouraged to shower prior to entering the water. Bathers may be required to shower as determined by staff.
- Stay clear of lifeguards and do not converse with them while on duty.
- No alcohol allowed, no intoxicated individuals allowed.
- Food and drink are limited to designated areas only. No glass containers allowed.
- No foul language/horseplay. No loud music or yelling.
- Smoking is not allowed.
- Fence must remain clear.
- No running on the deck.
- Do not walk in, stand on, or jump from the pool gutter.
- Personal floatation device(PFD) users must be supervised and in the shallow water only.
- No floatable toys, rafts, balls, etc. are allowed in the main pool.
- Stay clear of stairs and ladders except to enter/exit.
- The pool must close and patrons must exit entire facility when thunder is heard or lightning is seen, including a 15 minute period after the last lightning or thunder detected.
- ALL swimmers must exit the pool following a fecal or vomit accident until water is tested, cleaned, and treated(30 min.)
- Actions that are unsafe or a nuisance to others will be determined and restricted by staff.
- No pets are allowed in any areas.

POOL 2 - WATER SLIDE RULES

- One person on the slide at a time.
- Enter/exit slide feet first only.
- Do no slow or stop in slide.
- Swim away from and exit the slide area immediately at the nearest ladder.
- Actions that are unsafe or a nuisance to others will be determined and restricted by staff.

BEACH - FLOATING DOCK

- Jump off sides and front of dock only.
- No diving or flips off the dock.
- No swimming under the dock.
- Enter dock from ladder steps only.
- Actions that are unsafe or a nuisance to others will be determined and restricted by staff.
- No sitting in the guard chair.

POOL 1 & POOL 2 - CHILDREN'S POOL RULES

- The children's pool is for those six(6) yrs. old and under, with an adult supervising.
- Guardians will be responsible for the conduct of their children; it is their responsibility to see their children observe the rules.
- No food or drink allowed in the children's pool area.
- Proper swimming attire is required of all in the area.
- No running.
- Children with cuts/abrasions should not use any swimming facility.
- Actions that are unsafe or a nuisance to others will be determined and restricted by staff.

POOL 1 - DIVING BOARD RULES

- One person on the board at a time.
- Do not step on the board until the previous diver has reached the exit ladder.
- Do not run on the board.
- Take only one bounce and leave the board from your feet.
- Dive straight out from the end of the board.
- Exit the diving area at the nearest ladder only.
- Actions that are unsafe or a nuisance to others will be determined and restricted by staff.

POOL 1 - CONCESSION AREA RULES

- No food or beverage is allowed outside the area.
- Glass bottles, plates, or containers are not allowed in the area.
- Please place trash in designated receptacles.

BEACH - GENERAL RULES

- No swimming without lifeguard on duty.
- Children under the age of ten(10) must be supervised by someone four-teen(14) yrs. old & up OR an adult if determined by staff.
- Swimmers must stay within the marked lines. Water is shallow(under 5 feet) to the first line, and deep(over 5 feet) past the first line.
- Do not hang over lines/floats; swim under.
- No alcohol, no intoxicated individuals.
- No foul language or loud music.
- No pets allowed on the beach or in the water.
- Children who are not toilet trained must wear a swim diaper.
- Floatables are subject to use restriction.
- Staff may restrict use of balls and toys.
- No throwing sand, dunking, or "horseplay."
- No swimming in long or baggy pants.
- Stay clear of lifeguards and do not converse with them while on duty.
- Actions that are unsafe or a nuisance to others will be determined and restricted by staff.

How to Display The American Flag



The U.S. flag stands for our nation and the shared history, pride, principles, and commitment of its people. When we properly display this powerful symbol, we signal our respect for everything it represents.



The flag shouldn't be flown in inclement weather unless it's an all-weather flag.



Flags displayed at night should be properly illuminated.



In a time of national mourning, hang the flag at half-mast.

The flag can be flown every day, but it is often flown to show patriotism on these observances:

- | | | |
|---|--|---|
| New Year's Day Inauguration Day Lincoln's Birthday Washington's Birthday Armed Forces Day Memorial Day | Flag Day Independence Day Labor Day Patriot Day Constitution Day | Columbus Day Navy Day Veterans Day Thanksgiving Day Christmas Day |
|---|--|---|

When displaying the flag ...



From your porch, place the union (blue section) at the peak of the staff.



Against a wall or on a window, place the union (blue section) at the top left corner.



On your vehicle, clamp the staff to the right front fender.



With another flag, place the U.S. flag to your left when crossed.

U.S. FLAG ETIQUETTE INFORMATION

from usflag.org

The laws relating to the flag of the United States of America are found in detail in the United States Code. Title 4, Chapter 1 pertains to the flag; Title 18, Chapter 33, Section 700 regards criminal penalties for flag desecration; Title 36, Chapter 3 pertains to patriotic customs and observances. These laws were supplemented by Executive Orders and Presidential Proclamations

The Flag Code, which formalizes and unifies the traditional ways in which we give respect to the flag, also contains specific instructions on how the flag is not to be used.

- The flag should never be dipped to any person or thing. It is flown upside down only as a distress signal.
- The flag should not be used as a drapery, or for covering a speaker's desk, draping a platform, or for any decoration in general. Bunting of blue, white and red stripes is available for these purposes. The blue stripe of the bunting should be on the top.
- The flag should never be used for any advertising purpose. It should not be embroidered, printed or otherwise impressed on such articles as cushions, handkerchiefs, napkins, boxes, or anything intended to be discarded after temporary use. Advertising signs should not be attached to the staff or hallway
- The flag should not be used as part of a costume or athletic uniform, except that a flag patch may be used on the uniform of military personnel, fireman, policeman and members of patriotic organizations.
- The flag should never have placed on it, or attached to it, any mark, insignia, letter, word, number, figure, or drawing of any kind.
- The flag should never be used as a receptacle for receiving, holding, carrying, or delivering anything.

When a flag is so worn it is no longer fit to serve as a symbol of our country, it should be destroyed by burning in a dignified manner.

Our Woodhaven Lakes Veterans have provided a box at the Lakeview Building as a "drop off" location for your worn flags. They will be collected and disposed of in the correct, dignified manner.



ESAC CORNER susan mcgraw, esac manager

NEW SHED RULE

Many Property Owners are unclear on the new rule regarding shed size. Article VII, Section 6A now reads:

1. Shall be constructed on a level base with a floor designed to allow the shed to be easily relocated.
2. Shall have a roof pitch of not less than 3 inches per foot of rafter span, covered with a generally accepted roofing industry material, in accordance with the manufacturer's intended purpose and installation instructions. Manufacturer's specifications may be required for permit.
3. Shall not exceed 128 square feet, nor may it exceed a height of 9'6" measured from the shed floor to the outside peak of roof. Gable and roof extensions may not exceed 12 inches.
4. Storage sheds 100 square feet and over require a First Class Permit and must meet First Class Permit setback requirements. A Lee County Permit is also required.
5. A maximum of two storage sheds may be permitted on a Campsite, with the following provisions:
 - a. The two (2) shed structures cannot exceed a total of 128 square feet combined.
 - b. The two (2) structures are not joined in any manner and do not share any common components, i.e. roof, wall, floor, etc.
6. Shall not have plumbing, sanitary, cooking, or sleeping facilities installed at any time.
7. Sheds may be constructed of industry recommended material suitable for outdoor applications; and must be maintained to remain free of rotting, rusting, holes, or in any other way being left open to the elements.
8. Sheds constructed of wood must be of exterior quality and sealed with exterior paint.

The areas marked in red are the areas which have been changed. Previously, the largest single building permitted was 96 square feet. You are now able to have a shed up to 128 square feet. The total square footage of shed area did not change. If you have a 128 square foot shed on your property, you would not be permitted to have a second shed. Shed height has also been increased from 9' maximum to 9.5' maximum.

Property Owners who are in a Double Lot Variance are still only allowed 192 square feet of shed area on their property. Again, the biggest shed allowed is 128 square feet.

If you intend to modify your existing 8x8 or 8x12 shed into a 128 square foot shed, please note that a permit is required. Also, sheds under 100 square feet only require a 5' setback however sheds 100 square feet or over require a 7' setback. Please keep in mind, if you are modifying your existing shed, you may be required to relocate the shed to meet the 7' setback requirement.

After this rule was adopted by the Board of Directors, the Association was notified by Lee County Assessor's office that a Lee County permit would not be required as the increase is no more than 28 square feet over their 100 square foot requirement. However, Lee County did state they reserve the right to reconsider this in the future based upon new information (i.e. quality, amenities of the sheds being built) or if Woodhaven increases the size allowed again in the future. The Rules and Regulations will be modified to reflect this change in the near future.

As always, if you have any questions regarding any improvements on your property, we recommend contacting the ESAC Office at the beginning of your planning process to make sure your plans comply with the Rules and Regulations of the Association.

**NIGHTENGALES
THRIFT SHOP**

708 JEFFERSON ST. MENDOTA IL, 61342 | (815)539.6100

STORE HOURS
STORE AND CLINIC
HOURS ARE:
MON, WED, THURS,
FRI, SAT.
12PM - 3:30 PM

**WE SUPPORT:
TRINITY HEALTH
CARE & FREE
SUMMER
SWIMMING AT
MENDOTA POOL**

**IF YOU NEED THE SPACE,
WE'VE GOT THE PLACE!**

Located at the intersection of Hwy 52 and Dry Gulch Rd. Just outside of Amboy
Visit TripleZStorage.com or call 815-973-7337

Newly built state-of-the-art storage facility featuring the following:

- Full ventilation for the roof structure
- Full Condensation Control
- Moisture barrier under the concrete
- Door curbs to stop rain from blowing in
- Natural lighting inside the building
- Solar security lighting
- Multiple sizes available

Perfect place to store your golf cart, motorcycle, or any other personal items you might have.



Lori Erbes,
GRI
Designated Managing
Broker/Owner
815-535-6295
lorierbes@gmail.com



Marcia Kosowski,
Broker
815-582-2381
mkosowski@erbesrealty.com



Tonja Greenfield,
Broker
815-761-3220
tmg1973@gmail.com



Lisa Maher,
Broker
773-459-5472
lisamaher@erbesrealty.com



Sec 2, Lot 10 - \$43,000 Sec 2, Lot 223 - \$27,900 Sec 3, Lot 33 - \$35,900 Sec 3, Lot 90 - \$89,000 Sec 3, Lot 161 - \$67,000 Sec 4, Lot 120 - \$43,000



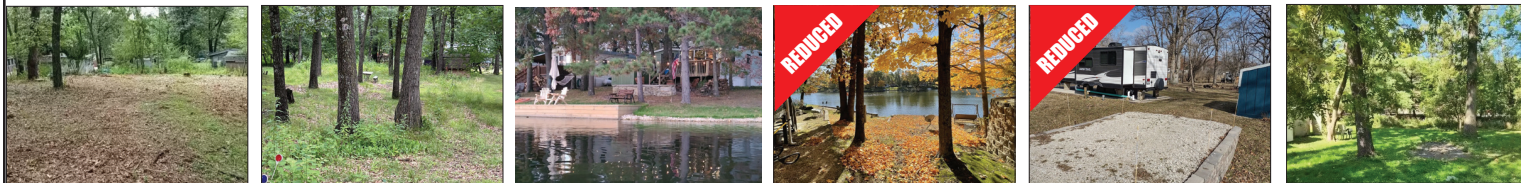
Sec 5, Lot 34 - \$39,000 Sec 5, Lots 54 - \$18,500 Sec 5, Lots 80 - \$17,000 Sec 5, Lot 110 - \$17,999 Sec 5, Lot 136 - \$14,500 Sec 5, Lot 156 - \$42,000



Sec 5, Lot 157 - \$19,500 Sec 5, Lot 368 - \$46,000 Sec 5, Lot 375 - \$14,900 Sec 5, Lot 396 - \$100,000 Sec 5, Lot 428 - \$35,000 Sec 5, Lot 457 - \$89,900



Sec 7, Lot 15 - \$29,000 Sec 7, Lot 87 - \$55,800 Sec 7, Lot 205 - \$10,000 Sec 8, Lot 48 - \$50,000 Sec 9, Lots 30 & 31 - \$92,000 Sec 9, Lot 221 - \$19,000



Sec 10, Lot 80 - \$14,000 Sec 10, Lot 133 - \$14,000 Sec 10, Lot 182 - \$99,900 Sec 10, Lot 196 - \$58,000 Sec 10, Lot 312 - \$46,900 Sec 11, Lot 14 - \$15,000



Sec 13, Lot 96 - \$25,000 Sec 13, Lot 100 - \$49,900 Sec 14, Lot 29 - \$43,000 Sec 15, Lot 131 - \$55,000 Sec 16, Lot 147 - \$41,000 Sec 16, Lot 211 - \$92,500

Sec 3, Lot 246.....CONTINGENT
Sec 5, Lot 55.....SOLD
Sec 18, Lot 10.....PENDING
Sec 21, Lots 15&16.....CONTINGENT
Sec 29, Lot 234.....CONTINGENT

****Property status is as of May 1, 2023****



Lori Erbes,
GRI
Designated Managing
Broker/Owner
815-535-6295
lorierbes@gmail.com



Marcia Kosowski,
Broker
815-582-2381
mkosowski@erbesrealty.com



Tonja Greenfield,
Broker
815-761-3220
tmg1973@gmail.com



Lisa Maher,
Broker
773-459-5472
lisamaher@erbesrealty.com



Sec 17, Lot 96 - \$19,900 Sec 17, Lot 202 & 203 - \$35,000 Sec 17, Lot 286 - \$39,900 Sec 19, Lots 89 - \$42,000 Sec 21, Lot 103 - \$87,500 Sec 23, Lot 166 - \$65,900



Sec 24, Lot 14 - \$55,000 Sec 26, Lot 218 - \$44,900 Sec 27, Lot 8 - \$25,000 Sec 27, Lot 72 - \$25,000 Sec 28, Lot 135 - \$34,900 Sec 29, Lot 98 - \$29,500



Sec 29, Lot 134 - \$48,000

**Thinking of Selling?
Wanting to Buy?
Give one of our
Agents a Call!**

Commercial Listings

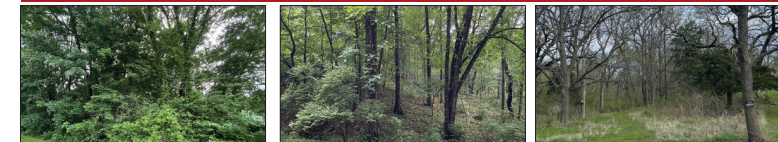


10 N US Hwy 34, Mendota - \$549,900
Great Business Opportunity! Sip n Snack has been in Business for 50 years! Awesome location with lots of traffic and close to Mendota golf course. So many opportunities with this restaurant/bar. Features include: large parking area, 70 KW generator, over \$100,000 in inventory and equipment. Downstairs seats around 230 and upstairs seats around 70 people.



4 W. Division St., Amboy - \$104,500
Great 1900 sq ft building on approximately 1/2 acre, that can be used for storage, office, or store front. This property is being sold AS IS.

Land to Build On



415 Saint Francis Dr., Dixon \$4,900 707 Mississippi Dr., Dixon \$4,900 00 Green Wing Rd., Amboy \$39,900

Land to Build On



315 Platte Dr., Dixon \$5,500 00 Liberty/Prospect St., Arlington \$17,900

Trailer Only For Sale



2011 Wildwood Travel Trailer - \$16,500

Residential Listings



17160 Timber Dr, Sterling - \$455,000
This beautiful brick home is located in a subdivision on 1.9 acre in the country. Features an open stairway in the formal entry way. This meticulously maintained 5 bedroom home has a gorgeous kitchen, dining room and living room. Call today for a showing! Realtor Related--(Seller to find a home of their choice)

556 Dry Gulch Rd., Amboy - \$335,000
Cozy well maintained home located on 5.5 acres. A great place for horses. This home features a spacious living room area with fireplace, all appliances stay in this beautiful kitchen, fenced in backyard, and a 3 car attached garage. You'll enjoy the front covered patio both morning and night, so bring your coffee or wine, and make this house your home.

146 W. Park, Amboy - \$139,900
4 Beautiful lots on a corner in Amboy. This 1/5 story home has been completely remodeled. Features 4 bedrooms, 1 bath, living room with electric wall fireplace and rope lighting around crown molding, first floor laundry, dream kitchen with garbage disposal, pantry and crown molding on ceiling, 1 car detached garage, central air, heat, roof redone in 2019.

323 W. Main St., Amboy - \$125,000
This ranch style home is ready for you to move into! Large back yard with concrete patio to entertain and relax by a fire. Features include 3 bedrooms, 1 bath, all appliances stay, central air and heat, family room in the basement and workshop area. Call today for a showing!

806 Douglas Ave., Ashton - \$89,000
Look no further! This two bedroom ranch home features hard wood floors, central air. Lennox furnace, an eat in kitchen with stove and dishwasher, plenty of cabinets, 200 amp electric service, dining room, living room, bath and laundry room. Front porch for entertaining. 1 car detached garage and carport off the back alley. Home being sold AS IS!

136 N. Mason, Amboy - \$44,900
As soon as you enter this property you'll feel the warm and welcoming vibe. This one and half story home has so much potential. Features 2 bedrooms, 1 bathroom and laundry room on the main floor, all appliances, enclosed front porch, and living area. The kitchen is spacious. Home is for sale AS IS.



Oak Wilt Disease & Detection

We will be entering what is considered the oak wilt season, which means Property Owners will need to be on the lookout for signs of this disease. Oak wilt has been affecting our oaks for a number of years, especially the red and black oak species. This disease will continue to affect the oaks into the future.

What is Oak Wilt & How to Identify the Signs?

Oak wilt is a fungal disease that attacks the cambium layer of a tree, which is the nutrient and water-conducting tissues beneath the bark. As one might guess, this prevents nutrients and water from being distributed within the tree. As a result, leaves begin to discolor and wilt, most often starting at the top of an infected tree in late spring through summer (Figure 1). The leaf discoloration can be described as a “muddy” color (Figure 2). Discoloration progresses downward in the tree. The leaves will begin falling at some point in this process, giving the appearance of “fall.”



Figure 1 shows a red oak dying from oak wilt. Trees generally die from the top down.

Most trees that show these symptoms will die within the season. The disheartening part is that no treatments exist to cure a tree already infected with oak wilt disease. The only recourse is to remove the diseased tree.

How Does Oak Wilt Spread?

The disease is spread mainly through root grafting and sap feeding insects. Grafting of roots occurs between neighboring trees where the roots literally grow together. Root grafting occurs between trees growing up to 50 feet apart. Due to this sharing of root systems, the disease can easily be transferred to healthy trees. This can lead to trees dying in an area or on a lot. Another avenue in which the disease spreads is by sap feeding insects. Through feeding activities, insects transfer the disease from diseased trees to healthy trees that have fresh wounds.



Figure 2 shows browning of the margins on red oak leaves giving them a “muddy” appearance.

Wounds are caused by wind, lightning, mowing, and pruning damage. It is important not to prune oaks during the growing season. This is from April to October. If pruning is necessary, be sure your pruning device is clean and cover the cut area with a tree wound dressing commonly found at nurseries and stores carrying outdoor supplies.

What the Owner Can Do.

There are some practices that can help prevent healthy trees from contracting the disease. The use of a good tree and shrub fertilizer is recommended as well as watering in times of extreme dry conditions. Oak trees under stress and older specimens are more susceptible to the disease. One can consult with a nursery to get

recommendations on the care of oaks. Again refrain from pruning oak trees during the active growing season, April to October.

What happens with the Oak Wilt Trees?

The Association handles the removal of infected oak trees. Frequent visual inspections are made throughout property by staff to locate diseased trees. We also rely on reports from Property Owners to detect additional cases of this disease. Please contact the Resource Department if you suspect the presence of oak wilt disease in a tree on or near your property.

Oak trees that are confirmed to have the disease will have a blue mark on the tree. Property Owners will receive a notification letter indicating a tree/s has the disease on their property. The tree is then scheduled for cutting and removal. The remaining stump is treated with a sterilant to kill it and the root system. By treatment, the stump will not likely continue to harbor the oak wilt disease. Lot owners are responsible for the removal of the remaining stump.

We will continue to combat this problem affecting our precious trees with the best methods economically possible. Maintaining the present forest structure is very important to us and the wildlife. We strongly encourage those lot owners severely affected by oak wilt and the tornado to continue replanting native trees and shrubs for the future. All wildlife species depend on these trees.

Aquatic Vegetation Control

This coming season we will again be taking steps to control the aquatic vegetation found growing in our lakes. The extent of control continues to be a controversial subject because each lake user has a different perception of the extent to which the aquatic vegetation should be controlled. The range of control sought by lake users can be from absolutely no control to elimination of all aquatic vegetation in a given lake. The goal set for our lakes is to maintain a level of control that allows for the designated recreational uses of the lakes during the season.

To achieve this goal, aquatic herbicides, and algaecides will be used in conjunction with the aquatic plant harvester. Herbicide and algaecide treatments should have begun before this paper is sent. Treatments in past seasons normally began during the first half of May. Aquatic herbicide manufacturers recommend a water temperature of 60 degrees F to have effective control of the vegetation targeted. This temperature is normally hit during early May.

Another factor determining the degree of herbicide usage during the season is the amount of oxygen found in the water column. In the spring of the year, lakes generally hold the greatest oxygen levels. Colder water has a greater oxygen holding capacity. As the water warms during the season, the amount of oxygen in the water column decreases.

Oxygen levels are important, as you may know, for the fish and other aquatic life to sustain themselves in a healthy manner. Herbicide treatments are intended to kill the targeted plants and

algae, which then sink to the bottom of the lake to decay. During the decay process, microscopic organisms break down the dead plant and algae material utilizing oxygen in the process taken from the water column. When large amounts of plant and algae material sink to the bottom, an above normal level of oxygen is utilized from the water column. This is why spring/early summer as opposed to mid to late summer are better times for treating aquatic vegetation. With higher levels of oxygen found in the water column in the spring, there is less risk of a fish kill occurring as a result of controlling the aquatic vegetation. Knowing how much area and when to treat is very important in avoiding a fish kill when temperatures are higher during the summer period.



Figure 4. Woodhaven's aquatic plant harvester out on one of the lakes removing vegetation.

The aquatic plant harvester is incorporated into the plant management program (Figure 4) throughout the season. Often, the plant harvester is used to remove a significant portion of the plants and algae from an area prior to initiating an herbicide treatment. With a portion of the plants removed through harvesting and reducing the scope of the treatment, the chances of a fish kill are greatly reduced while opening areas of the lake that had become overgrown with aquatic plants.



Figure 5. Photo of specimen samples of native *Elodea nuttallii* species (top left, and bottom) and invasive *Hydrilla* (top right). *Hydrilla* is very aggressive once in a lake or pond. Please keep a lookout for the *Hydrilla* plant. Photo Credit: K. Jensen

One of the drawbacks to using the harvester is the amount of plant cuttings that float around the lake. Often these cuttings accumulate opposite the direction of the wind. Periodically in the season, when wind conditions are right, the harvester operator is directed to specifically target these areas for removal of the accumulated vegetation. It is much more efficient to remove floating vegetation when concentrated in a particular location along a shoreline.

Even the best aquatic plant management plans succumb to many uncontrollable factors, most of which are weather-related. For instance, extended cloudy, cool weather with frequent rains delays being able to start early on controlling the aquatic plants and algae. As you recall earlier in this article, treatment should not begin until water temperatures reach the 60-degree mark. The plants and algae continue growing but not as fast under cool, cloudy conditions though water temperatures are too low to begin chemical treatments. Suspended sediment brought into the lake by heavy spring rains is not favorable to treating with herbicides. The suspended sediment inactivates the herbicide used on our lakes; thus, a waiting period must follow a heavy rain event for the water to clear. Suspended sediment also transports nutrients into the lake that continue to fuel excessive plant and algae growth during the season. Another risk related to the weather is the timing of an application. An application made on a perfect day but followed by unexpected heavy rains or extended cloudy, cool weather reduces the effectiveness of the herbicide.

There are ‘new’ aquatic invasive species threatening our lakes, *Hydrilla* and *Starry stonewort*. *Hydrilla*, an aquatic plant once considered a southern U.S. problem species, has now been found in some Midwestern states, including Illinois, Missouri, Indiana, and Wisconsin, over the past few years. This aquatic plant is recognized as one of the world’s worst weeds (Figure 5). *Starry stonewort* (Figure 6) is another species that has been found in Michigan, Indiana, and Wisconsin. This is a species of algae similar to our *Chara* but much more prolific. If either is introduced into our lakes, they could cause greater problems than we are currently dealing with, as both can grow very fast! To prevent it from coming into our lakes, I am asking all water enthusiasts to thoroughly inspect their watercraft when leaving bodies of water in other areas and states to stop these ‘hitchhikers’ from entering our lakes. This plant is not the only invasive, threatening lakes and rivers throughout the Midwest.

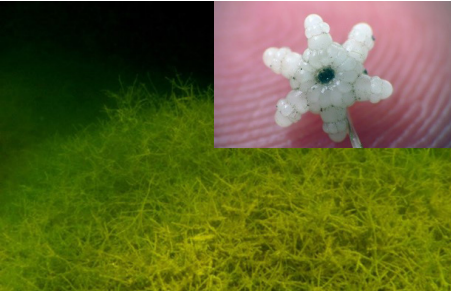


Figure 6 shows another recent invasive species in the upper Midwest, *Starry stonewort*, which has been found in Indiana, Michigan, and Wisconsin. It is a threat to Illinois. This is a species of algae native to Eurasia. It is prolific often displacing our native plants. Note the bulbil in the inset photo. These structures distinguish the *starry stonewort* from other species.

This gives you an idea of the goal established for the lakes in managing the aquatic vegetation as well as information relating to the processes for achieving this goal. To reiterate, we are not trying to eliminate the aquatic vegetation but rather achieve a “balance” between vegetation and use of the lake. Aquatic vegetation is important to the overall health of the lake ecology. The vegetation also adds interest to the overall lake experience. Try viewing the aquatic vegetation as unique in form and function. A landscape without vegetation is not very appealing to man nor beast. This also extends under the water’s surface!

This gives you an idea of the goal established for the lakes in managing the aquatic vegetation as well as information relating to the processes for achieving this goal. To reiterate, we are not trying to eliminate the aquatic vegetation but rather achieve a “balance” between vegetation and use of the lake. Aquatic vegetation is important to the overall health of the lake ecology. The vegetation also adds interest to the overall lake experience. Try viewing the aquatic vegetation as unique in form and function. A landscape without vegetation is not very appealing to man nor beast. This also extends under the water’s surface!

STOP THE SPREAD OF AQUATIC INVASIVE SPECIES! CLEAN, DRAIN, DRY AFTER EVERY WATERBODY, EVERY TIME.

CLEAN off visible aquatic plants, animals, and mud from all equipment before leaving water access.

- Rinse equipment and boat hulls (with high pressure, hot water when possible).
- Rinse interior compartments of boats with low pressure, hot water (120°F).
- Flush motor with hot water (120°F) for 2 minutes (or according to owner’s manual).

DRAIN motor, bilge, live well, and other water containing devices before leaving water access.

DRY everything for at least five days OR wipe with a towel before reuse.

Remember to renew your fishing license for this season which began April 1, 2023.

Free Fishing Days are scheduled throughout the State of Illinois for June 16, 17, 18 & 19. You will not be required to have a license during Free Fishing Days. During this period only, anglers will not be required to have any type of sport fishing license. Anglers are responsible for knowing & adhering to catch limits and size restrictions on all water bodies being fished during Free Fishing Days.

VOLUNTEERS NEEDED TO SET UP AND RUN A KIDS FISHING SEMINAR

We are looking for volunteers to put on a beginner fishing seminar this season to help young people learn basic fishing skills and techniques. For more information, contact the Resources Department at extension 305.

REPORT ANY DEER YOU FIND DEAD ON OR NEAR YOUR PROPERTY TO THE RESOURCE OR PUBLIC SAFETY DEPARTMENTS.

DAILY CATCH LIMITS AND RULES - 2023

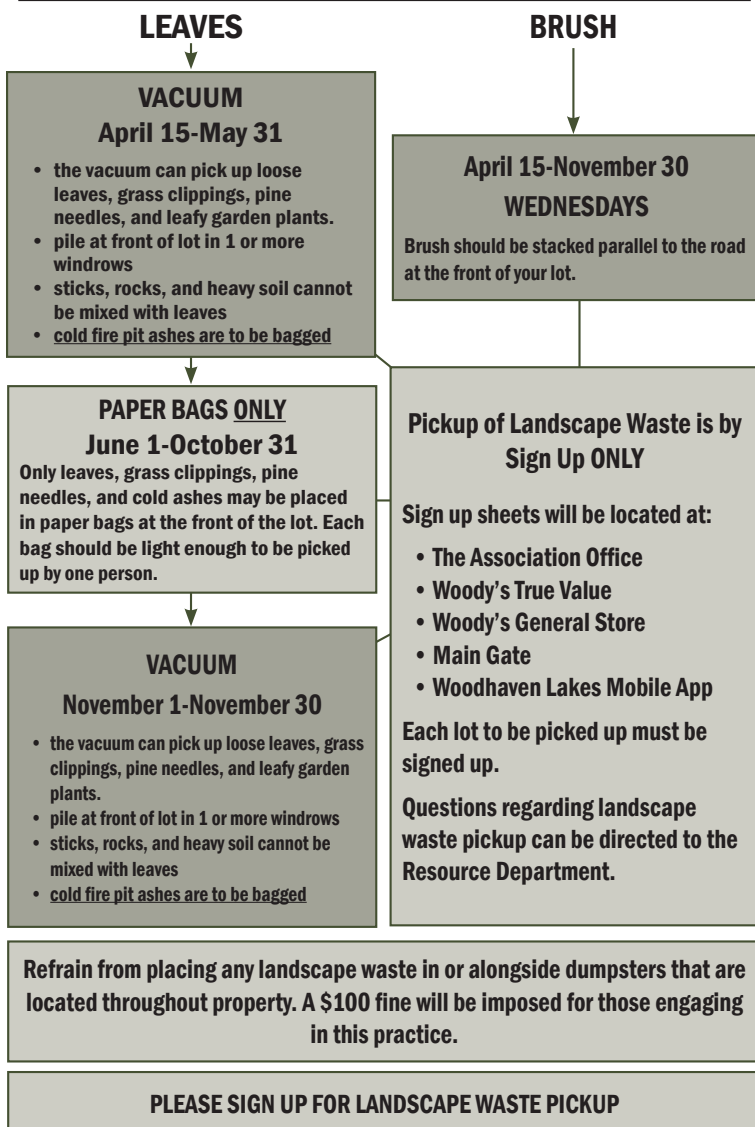
- Woodhaven Lake** - largemouth bass - harvest up to 3 fish under 12 inches and "Catch & Release" on fish 12 inches and greater.
- Bass Lake** - largemouth bass - harvest up to 3 fish under 12 inches and "Catch & Release" on fish 12 inches and greater.
- Pine, Sunset, Black Oak, Hidden & Bluegill lakes** - 1 largemouth bass/day, 14 inch minimum length limit.
- All Lakes** - 15 fish combined catch limit on bluegill and redear species.
- All lakes** - 15 fish limit on crappie
- All Lakes** - 4 fish limit on channel catfish.
- All lakes** - return grass carp to the lake
- All lakes** - No limit on common carp, bullhead, and green sunfish species.
- All lakes** - NO MINNOWS: using live minnows can introduce unwanted species/organisms into our lakes.
- No harvesting of turtles.** This is geared mainly towards snapping turtles in which populations have been declining in the State over the years due to overharvest.
- 2 poles and line only in the water at a time for all the lakes on property.** With this restriction, anglers would be allowed to have multiple poles but only 2 lines in the water at a given time.
- No unattended fishing devices allowed at any time on any of the lakes.** Unattended devices can cause mortality to fish and turtles that should be released if undersize as well as interfere with boaters using the lakes.
- No trotline or jug fishing on any of the lakes.** Given our fisheries are recreational, I believe these devices are damaging to our fisheries and interfere with boaters using the lakes.



Wood Decks | Room Additions
Screen Rooms | Steel Roofing
Windows, Doors, Siding

815-326-0869 | curts@frontier.com

LANDSCAPE WASTE LOT-to-LOT PICKUP PROCEDURE



CHAPEL IN THE WOODS - SCHEDULE

Chapel in the Woods began shortly after the development of the Woodhaven Lakes property. Informal gatherings were held each Sunday, led by a lay minister. As in the past, services are inter-denominational and Bible based. Speakers and special music guests are used for worship, prayer, and fellowship.

All Woodhaven owners and their guests are welcome to attend the Chapel worship services each Sunday at 10 a.m. The Committee believes this beautiful resort we enjoy year after year is a gift from God, and we offer an opportunity for everyone to worship Him while they are at Woodhaven. All services will be held in the Pavilion.

| | | | |
|---------|------------------------------------|-------------|---|
| May 28 | <u>Cami Shrock</u> | July 23 | <u>Kevin Comfort</u> |
| June 4 | Tom Fraser | July 30 | Tom Schmidt |
| June 11 | <u>Audience of One</u> | August 6 | <u>Victorious Trio</u> |
| June 18 | <u>Judy Dagraedt</u> | August 13 | David Logston <u>Linda Logston</u> [Communion Service] |
| June 25 | Gil Valenzuela | August 20 | Jerry Gleason |
| July 2 | <u>Cathy Rouch</u> | August 27 | Justin Algrim <u>Greg Green</u> |
| July 9 | Jay LaRette | September 3 | <u>Judith Montgomery</u> |
| July 16 | Kerry Kraker Pottery Demonstration | | |

Music Specials are underlined | Communion Service is August 13

BAKER INSURANCE

INSURANCE PROTECTION FOR WOODHAVEN PROPERTY OWNERS

Dear Woodhaven Property Owner,

Since 1986, I have specialized in providing insurance for all your camping needs at Woodhaven. I can customize your policy so you only pay for the coverages you need and want.

Some benefits of this program include:

- All-risk protection including wind, fire, lightning, etc.
- Coverage for your personal effects, shed, deck, etc.
- Liability protection for your lot and trailer
- Special Discounts if you are 50 years of age.
- Replacement cost option on your trailer.

If you would like more information, please call anytime, including evening and weekends.

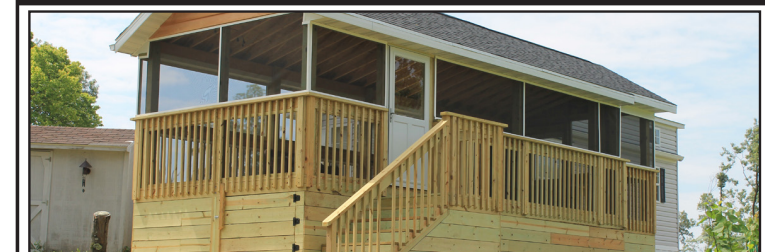


Julie (Baker) Morey
Agent

815.822.4696
jmbakerins@gmail.com



KEN RICKETTS
815-690-4025
KEN@PRIMESOLINC.COM
PRIMESOLINC.COM



GOT PROJECTS BACK HOME? WE CAN HELP! CALL US FOR A FREE ESTIMATE TODAY!

- ROOFING
- CARPENTRY
- RETAINING WALLS, SEAWALLS,
- PATIOS, & WALKWAYS
- GRAVEL DRIVES & PADS
- PAINTING & STAINING
- CUSTOM BUILT DECKS & SCREEN ROOMS
- POWER WASHING
- TRAILER SKIRTING
- GLASS REPLACEMENT
- GENERAL MAINTENANCE
- ROOM ADDITIONS
Durabilt
- 3-Season & 4-Season Rooms
- Covered Porches

0% APR Up to 18 months
Explore 0% APR financing for your project
See options
*0% interest is for promotional period only.

FREE ESTIMATES | FULLY INSURED

FOLLOW US ON SOCIAL MEDIA!

Woodhaven Lakes

As we move into Easter weekend, the amount of damage and required cleanup efforts from last Friday's EF2 tornado has come much more into focus. While not as widespread from the tornado in 2015, the damage to trees and personal property from last week's storm is significant. The areas with the most concentrated damage were Section 1, Section 15, and Section 16; and a total of 520 lots experienced some form of storm damage. The damage totals break down as follows: • 447 lots w/... See more

Woodhaven Association
03/31/2023 Storm Damage

WLA
110 posts 1,578 followers 68 following

Woodhaven Association
Woodhaven is a private, recreational camping resort in the heart of N. Central Illinois, just 2hrs west of Chicago. #WoodhavenLakes woodhavenassociation.com

COMFORT STATIONS 3, 9, 17, & 22 ARE OPEN FOR THE WINTER SEASON.

Fall Fest Weekend

Woodhaven Lakes
@woodhavenlakes

A private, recreational camping resort in North Central Illinois.

Sublette, IL woodhavenlakes.com Joined January 2010

55 Following 499 Followers

NORTH CENTRAL BANK

Hennepin 815-925-7373
Ladd 815-894-2386

Member FDIC NMLS# 405315

OUR LENDING TEAM IS READY TO HELP YOU ACHIEVE YOUR FINANCIAL GOALS

Great Rates - Excellent Options

CALL TODAY or APPLY ONLINE

www.northcentralbank.com

VAESSEN BROTHERS CHEVROLET, INC.

"GREAT DEALS - GREAT SERVICE SINCE 1926"

HIGHWAY 52
SUBLETTE, IL 61367
800-227-5203

Check out our selection of New & Used Cars, Trucks, Crossovers, & SUVs

We service all U.S.

Cars, Trucks, Vans, Crossovers, SUVs, & Motorhomes

Service Hours: Mon-Fri 7a.m.-5 p.m. | Sat. 7 a.m.-12 p.m.

800-227-5203 | 815-849-5232 | vaessenbrothers.com

Minutes from Woodhaven Lakes - Route 52 in Sublette

WOODY'S PIZZA PLUS

Pizza - Chicken - Fries & More

NEW MENU ITEMS!
WAKE UP AND TRY OUR BREAKFAST PIZZA BY THE SLICE OR STOP BY FOR LUNCH AND GIVE OUR GRILLED OR CRISPY CHICKEN SANDWICH A TRY

WOODY'S GENERAL STORE & RESTAURANT

BAKERY & DELI - FROZEN FOODS - LOTTERY
CAMPING & PICNIC SUPPLIES - CLOTHING & HATS
BEER • WINE • LIQUOR

815-849-5189

CATERING:
PICK UP OR DELIVERY!
815-849-5189

CAMPSTOVE RESTAURANT JUNE HOURS:

| | |
|----------|------------|
| SATURDAY | 8 AM-11 AM |
| SUNDAY | 8 AM-11 AM |

GENERAL STORE JUNE HOURS:

| | |
|-------------------|------------|
| MONDAY-THURSDAY | 8 AM-4 PM |
| FRIDAY & SATURDAY | 8 AM-9PM |
| SUNDAY | 8 AM-3 PM |
| TUESDAY | CLOSED |
| FRIDAY 6/30 | 8 AM-10 PM |

COME CHECK OUT OUR NEWLY RENOVATED, RESTAURANT AREA!

WOODY'S PIZZA PLUS

Pizza - Chicken - Fries & More

PIZZA PLUS JUNE HOURS:

| | |
|-------------------|------------|
| MONDAY-THURSDAY | 11 AM-1 PM |
| FRIDAY & SATURDAY | 11 AM-8 PM |
| SUNDAY | 11 AM-2 PM |
| TUESDAY | CLOSED |
| FRIDAY 6/30 | 11 AM-9 PM |

PIZZA PLUS:
815-849-5197

ROSATI'S
Authentic Chicago Pizza
MyRosatis.com

MENDOTA

• 815.538.3838 •
801 6TH STREET
Located in Downtown Mendota

Dine-In • Full Sports Bar • Outdoor Patio Seating

TALL BOY BUSCH LIGHTS \$3.50 EVERYDAY!
DAILY SPECIALS & FRIDAY HAPPY HOUR STARTING @ 3PM

OVER \$1 MILLION WON HERE IN 2022!

Play SLOTS!

UNIVERSAL GAMING GROUP

Woodhaven Lakes Exclusive!
15% OFF
~~10% OFF~~
Any Order of \$25 or More

Valid at Rosati's of Mendota only. Must mention coupon when ordering. Not valid with other coupons/offers/specials/ discounts or Alcohol. Limited Time Offer.

The focus of **Woodhaven Lakes Realty** is to assist our clients, both buyers and sellers, to ensure their transaction is as seamless as possible. Part of that is by ensuring that all documents are transferred accurately and in the timeliest manner possible.

There are a multitude of documents involved in our **Woodhaven Lakes Realty** closing transactions, but one of the most important ones in the RV title. It is very similar to the title for your car, truck, or motorcycle. With that being said, we know you wouldn't dream of taking ownership of any of those things without the original and valid title for transfer with the Secretary of State.

For this reason, we require a copy of your original RV title at the time of listing. It is to ensure multiple things. One, that an original exists and two, that the person listing their property is the actual owner of the RV. If the deeded owner and the titled owner are

different people, the property can still be listed with **Woodhaven Lakes Realty**, but both owners would need to sign documents and be available for the closing.

The original then needs to be presented at closing, so that the new owner can have it transferred with the Secretary of State. We always recommend that you submit for the ownership change as soon as possible, as the RV is considered owned by the owner noted on the current title until then. **Woodhaven Lakes Realty** takes pride in covering as many details of your transfer of ownership that we can, as just one of the many ways we work to ensure your buying and selling process is smooth as it can be.

Give us a call at **Woodhaven Lakes Realty** if you are looking to buy or sell - we are here to help! (815)849-5476



815-849-5476 | woodhavenlakes.com/wlri

Monday-Saturday | 8:30am -4:30pm

(Starting 5/28) Sunday | 10am-2pm

please call for an appointment

Find us on realtor.com | trulia.com | zillow.com

Congrats! REALTOR® of the YEAR Bonita Willis



Congratulations to our very own Bonita Willis on her achievement of receiving 2023 Realtor of the Year!

Bonita became a Realtor broker just a few short years after college, and has been with Woodhaven Lakes Realty, Inc ever since. As anyone who is familiar with Woodhaven Lakes knows, we are quite unique as far as campgrounds and camp resorts go, and our Realty office is no exception - from the type of work we do, to the type of people we work with.

Bonita's career with WLRI has grown from broker up to Designated Managing Broker, where she now supports four brokers, as well as manages her own listings.

Woodhaven Lakes Realty, Inc is a member of the local Realtor Association, HomeTown Association of Realtors. The HomeTown Association of Realtors covers Lee, Whiteside, Ogle, and Dekalb counties.

Bonita has served as the Association President since 2021, now supporting not just her own brokers, but all other broker members of the HomeTown Association of Realtors.

Randy Koehler, long time colleague and General Manager of Business Services at Woodhaven Lakes had this to say: "Bonita's morals and ethics are beyond reproach. She truly cares about representing the best interests of her clients while being very loyal and supportive to her staff and co-workers. She is very deserving of the HAR Realtor of the Year Award."

MAKE YOUR TRAILER A RESORT

WELCOME BACK

SLEEPERS - EZ LOUNGERS - FUTONS - MATTRESSES
INCLUDING SHORT QUEENS AND OTHER SIZES.

DELIVERY AND PLACEMENT IN YOUR TRAILER

CASH OR CHECK - PAID IN FULL, NO TAX ADDED



MEYERS
FURNITURE & FLOORING

FINANCING AVAILABLE

1901 S. State, Hwy 251 | Mendota, IL
815-539-6263

meyersfurnitureandbedding.com
meyersfurniture63@gmail.com



705 Illinois Ave. Mendota, IL 61342

815-539-5142

Over 39 Years Experience

**WE HAVE COMPLETED OVER 300
ROOFS IN WOODHAVEN ALONE!**



NILSROOFING.COM
AUTHORIZED CONTRACTOR. NRCA • BBB

Any Type of Property
Any Time of Year



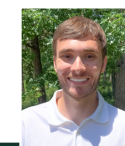
Bonita Willis | ePRO, C2EX
Designated Managing Broker



Mary Lovgren
Realtor® Broker
815-994-1449
maryelovgren@gmail.com



Sal Bayron
Realtor® Broker
312-952-3409
SBayron@sbcglobal.net
Se Habla Español



Justin Wiley
Realtor® Broker
815-849-5390
JWiley@woodhavenassociation.com



www.woodhavenlakes.com/wlri
realtor.com | trulia.com | zillow.com

815-849-5476

509 LaMoille Road
Sublette, IL 61367

THE NATURALIST CORNER

alyssa rod, nature center coordinator

June is here! That means baby animals can be found all around Woodhaven. Baby animals go by different names depending on which animal we talk about. A baby deer is a fawn. Baby groundhogs and foxes are called pups, kits, or cubs. Baby snakes are snakelets and baby frogs are tadpoles. Baby fish are fry and baby bugs are larva, nymph, or grubs. Baby birds in general are called chicks, but some birds have specific names like ducklings (ducks), goslings (geese), owlet (owls), cygnet (swans), eaglet (eagles), and colt (cranes), just to name a few.



When we see baby animals alone, we immediately think they need help. This is not the case. **Leave baby animals alone!** Unlike human babies who can't do much for themselves for many years, baby animals grow up quickly. Many species must fend for themselves within a month or two. If you see a baby animal, follow these simple rules.

- 1. Keep your distance:** If you approach too closely, you may cause the animal more stress, both the babies and the parents. Getting too close to a young animal may scare it and cause it to flee to either an unsuitable or unsafe location and away from where its parents left it. Many parents are within the area and watching from a distance as they look for food for their young. If the parents are farther away, they have left their young in a safe location for them to come back to.
- 2. Avoid feeding babies:** You may think the baby looks hungry or needs food, but that is the job of its parents. They are out finding correct foods to bring back and feed. Many baby animals have specific needs at different ages and cannot eat the items that adults eat. Leave the feeding to the parents.
- 3. Keep the area safe:** Keep pets, children, yourself, or anything that can draw attention to the baby animal away. Any of these can draw more attention to the baby which can lead predators to easy prey. Also touching these babies will put your human scent on them, leading potential predators to the area.
- 4. If a baby animal appears injured or there is concern for its safety, watch and wait:** Sometimes, something may have happened to the parents, or the baby may have been injured. If you think something is wrong, do not touch the animal or go to it, but watch from a distance. Most wildlife rehabilitators will tell you to watch for 24 hours and if no parent has come back call a licensed rehabilitator for help. If the animal is injured call a rehabilitator first. It is illegal to keep wildlife in captivity or as pets in Illinois without permits. Untrained individuals should not handle wildlife as they can injure you and could carry diseases or parasites that are transmittable to you or your pets.

Check out our Woodhaven Lakes Nature Center page on Abandoned or Injured Animals for more details or a list of licensed wildlife rehabilitators. <https://woodhavenassociation.com/abandoned-or-injured-animals/>

June at the Nature Center: Summer is almost here so head over to the Nature Center and find out more about the nature that surrounds you! We've created some new exhibits about clouds, life under the ocean, groundhogs and more. We will take a closer look at some of our plants and animals that can be found around the

Woodhaven area as well. Make sure to stop by the Nature Center every weekend this summer to join us in creating a free nature craft and pick up the weekly Nature Journal page. We will have some amazing new and returning programs to offer all throughout the summer so see you soon!

MINI - Nature Center Farmer's Market

Saturday, June 17 - 10:00 a.m. - 4:00 p.m.

Sunday, June 18 - 9:00 a.m. - 3:00 p.m.

Nature Center Front Yard

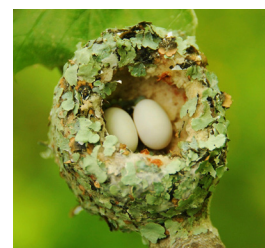
Stop by for a sweet honey treat! Johnson's Honey Farm will be set up in the Nature Center yard selling your favorite honeys, Amish treats, and more over the weekend.

Nature Nuggets: Let's take a closer look at local nature!

This month we'll focus on a local summer visitor: the **Ruby-throated Hummingbird** (*Archilochus colubris*). Hummingbirds are some of the smallest birds in the world and the Ruby-throated is the smallest common bird species in Illinois! Currently there are 129 species of hummingbirds in North America and over 360 species total in the world, through North and South America only.



Ruby-throated Hummingbirds are small, averaging 3-3.75 inches in length and weighing no more than a US penny or about 3 grams. During the winter they live in southern Mexico and Central America in warmer climates. Typically by May, these hummingbirds will be back in Illinois for the summer season only to leave for Mexico by October. They can be found in woodlands, orchards, and gardens.



Nests are small like the bird, attached to a tree branch and woven out of plant down, held together with spider silk and covered with pieces of lichens. Female Ruby-throated Hummingbirds will lay two white eggs and incubate them for 11-16 days. These eggs are the size of a pea!

This hummingbird feeds mostly on nectar, but also eats insects and spiders. They will consume twice their body weight in food each day. One way to help hummingbirds is to place hummingbird feeders in your yard and make homemade nectar to put inside. The best recipe is 1 cup of sugar to 4 cups of water. Hummingbirds like red which is why most feeders are colored red. There is hummingbird liquid food that can be bought but you should never buy anything dyed red. Researchers believe that the red dye can hurt the birds and it is not needed anyway. If you do decide to have hummingbird feeders, make sure to clean your feeder with hot water and a soft brush every 2-3 days as the sugar water will spoil during the sizzling summer. Do not use soap.

Fun fact: Hummingbirds can fly fast both forward or backward and are also able to hover! Their wings can beat up to 75 times per second! How fast can you flap your arms?

NATURE CENTER HOURS MAY:

Saturdays: 10:00 a.m. - 5:00 p.m.

Sundays, Mondays, Wednesdays, Thursdays, and Fridays: 9:00 a.m. - 3:00 p.m.

Tuesdays: CLOSED

WOODY True Value HARDWARE

Advertised Bargains and Hours of Operation are for June Only

Memorial Weekend
Sat. & Sun.: 8 a.m.-6 p.m.
Monday: 8 a.m.-2 p.m.

June
Mon.-Sat: 8 a.m.-5 p.m.
Sunday: 8 a.m.-3 p.m.

BARGAINS OF THE MONTH®



119.99
DeWALT®
20V MAX* Brushless
1/4 in. Cordless Impact
Driver Kit R 248 962 5



39.99
Lasko®
20 in. Deluxe Wind
Machine® W 730 044 1



19.88
Kingsford®
2 pk. 16 lb. Original
Charcoal T 118 118 1



15.99
Annis®
3 ft. x 5 ft. Cotton
Replacement U.S.
Flag T 535 742 B3

Glass Cutting | Propane
Fax | Copier | Shipping
Keys Cut
Gasoline | Gift Certificates

Rentals:
Floor Care | Weed Eaters
Appliance Dollies | Spreaders
Leaf Blowers
Pressure Washer



19.99
DeWALT®
10 pc. Screwdriver
Set R 144 226 B4



89.99
DeWALT®
108 pc. Mechanics Tool
and Socket Set R 195 264 1



89.99
Performance
Tool®
2 T. Trolley Jack &
Stand Combo H 248 222 1



59.99
YOUR CHOICE
Four Seasons
Courtyard®
Sunny Isles Extra-Large
Zero Gravity Chair
T 270 118, 119 B3

Consumer responsible for taxes. While supplies last.

TV-AD-4139872612

WOODY TrueValue Hardware
815-849-5107

Just off Woodhaven Drive in Section 9
Or off property at 1802 Sublette Rd, Sublette

True Value®

Sale ends 6/30/23

©2023 True Value Company LLC

Find the right products for your project at your local True Value®.

We have a full line of treated and non-treated lumber for interior or exterior projects!



815-849-5476

Please call for an appointment

Monday-Saturday 8:30 a.m.-4:30 p.m. | Sunday: 10 a.m.-2 p.m

View available properties: woodhavenassociation.com | realtor.com | zillow.com | trulia.com

NEW

| | |
|----------|-----------|
| 1/65 | \$115,000 |
| 4/114 | \$9,750 |
| 5/158 | \$42,500 |
| 5/200 | \$23,900 |
| 5/348 | \$24,000 |
| 5/349-50 | \$76,000 |
| 6/7 | \$29,900 |
| 6/13 | \$15,000 |
| 7/125 | \$129,900 |
| 9/73 | \$24,500 |
| 10/106 | \$39,999 |
| 11/61 | \$37,500 |
| 11/247 | \$47,999 |
| 12/25 | \$44,500 |
| 15/168 | \$48,000 |
| 16/87 | \$45,000 |
| 17/3 | \$16,500 |
| 17/67-8 | \$59,000 |
| 17/74 | \$33,900 |
| 22/120 | \$43,900 |
| 26/6 | \$58,500 |
| 29/118 | \$86,000 |

CLOSED

| | |
|----------|-----------|
| 3/104 | 17/249 |
| 5/541 | 20/10 |
| 5/490 | 21/15&16 |
| 10/97&98 | 21/110 |
| 11/92 | 26/246 |
| 11/264 | 29/119 |
| 13/104 | |
| 1/29 | \$29,000 |
| 1/139 | \$48,900 |
| 2/76 | \$110,000 |
| 2/123-4 | \$64,900 |
| 2/141-2 | \$30,000 |
| 2/156 | \$23,499 |
| 3/46-7 | \$50,000 |
| 4/175 | \$20,000 |
| 5/28 | \$66,000 |
| 5/125 | \$55,000 |
| 5/458 | \$80,000 |
| 6/20 | \$44,900 |
| 6/40 | \$15,000 |
| 7/57-8 | \$78,000 |
| 7/140 | \$65,000 |
| 9/43 | \$75,000 |

| | | | |
|----------|-----------|--------|----------|
| 9/178 | \$18,500 | 21/268 | \$36,500 |
| 10/52 | \$11,500 | 22/87 | \$18,500 |
| 10/82 | \$12,000 | 23/91 | \$18,500 |
| 10/90 | \$44,900 | 25/132 | \$15,000 |
| 10/114-5 | \$45,000 | 27/54 | \$68,200 |
| 10/153-4 | \$120,000 | 27/104 | \$41,000 |
| 11/7 | \$42,500 | 27/107 | \$29,900 |
| 11/92 | \$51,900 | 29/5 | \$25,000 |
| 11/113 | \$47,500 | 29/119 | \$75,000 |
| 11/172-3 | \$30,000 | 29/169 | \$16,500 |
| 11/176 | \$19,000 | 29/210 | \$50,000 |
| 11/263 | \$55,000 | | |
| 13/97 | \$13,500 | | |
| 13/110 | \$10,600 | | |
| 13/140 | \$19,500 | | |
| 15/60 | \$44,900 | | |
| 15/79 | \$17,900 | | |
| 15/141 | \$25,900 | | |
| 16/204 | \$79,000 | | |
| 17/100 | \$26,500 | | |
| 17/103 | \$30,500 | | |
| 17/249 | \$29,000 | | |
| 20/37 | \$23,500 | | |
| 21/86 | \$100,000 | | |
| 21/174 | \$20,000 | | |
| 21/176 | \$59,900 | | |

Reduced | *Contingent/Pending*

Information Last Updated 5/17/23



Mary Lovgren
 Realtor® Broker
 815-994-1449
marylovgren@gmail.com



Sal Bayron
 Realtor® Broker
 312-952-3409
SBayron@sbcglobal.net
 Se Habla Español



Justin Wiley
 Realtor® Broker
 815-849-5390
JWiley@woodhavenassociation.com

Bonita Willis | ePRO, C2EX, Designated Managing Broker

