

WOODHAVEN NEWS

APRIL '23 | VOL. 40 NO. 3



WHATS INSIDE:

Management Report
pgs. 3-4

Proposed Changes to Rules & Regs.
pg. 11

Recreation & Activities
pgs. 14-16

PRESIDENT'S LETTER



I want to start this message with some good news. This *Woodhaven News* will be arriving at your residence around the first weekend in April, which means we are all ready to return to Woodhaven for the season. I know we are all anxious to open up.

The Board has been busy the last few months. We have spent a lot of time and discussions working on a few rule changes. Hopefully, these changes will go into effect in the last part of April or the beginning of May. The first one was the change to allow larger shed sizes. The details about that change are covered in last month's *Woodhaven News*. The discussion about the use of e-bikes went on for multiple meetings. The Board has asked staff to publish the rule change for e-bikes in this issue. The Board would like any ideas concerning this change to be sent to us using Speak Up sheets.

I want to thank the Board of Directors and our management staff for all the hard work they did researching and discussing the change.

The event calendars are available in the Association Office, so feel free to stop by and pick one up. There are again some great events and bands scheduled this year.

I am looking forward to seeing everyone again enjoying their time at Woodhaven.

Daniel Rossi,

Board of Directors President



- 1 | **Message from the Board**
- 3-4 | **Management Report**
- 5 | **WLRI Residential Properties for Sale**
- 6-7 | **Board News & Meeting Schedules**
- 8-9 | **Citations/Violations | Section Reps.**
- 9 | **New Property Owners**
- 10 | **Woody's True Value Report**
- 11 | **Proposed Changes to the Rules & Regs.**
- 12-13 | **Weather and Storm Information**
- 14-16 | **Recreation & Activities**
- 17 | **Committee Membership Application**
- 20-21 | **Resource News**
- 24-25 | **ESAC Corner | WLRI News**
- 26 | **The Naturalist Corner**
- 27 | **Woody True Value Bargains of the Month**
- 28 | **Woodhaven Lakes Realty Lots for Sale**

Woodhaven News
 509 LaMoille Road, P.O. Box 110
 Sublette, IL 61367
 815-849-5209

Copy & Advertising Deadline: First of each month. No issue in February.

Woodhaven News (USPS001-073) is published monthly except February by Woodhaven Association, 509 LaMoille Road, Sublette, IL 61367, as an official source of information for Woodhaven Association members. Subscription price is \$2.25 per year included in annual assessment.

Periodicals postage paid at Sublette, Illinois and additional mailing offices.

Postmaster: Send address changes to Woodhaven News, P.O. Box 110, Sublette, IL 61367-0110.

The Woodhaven News disclaims any liability for any advertisements published herein and in no way endorses or guarantees these ads. It also reserves the right to reject any ads submitted.

Letters to the Editor: All letters must be signed, names may be withheld upon request. Please limit letters to 200 words. Woodhaven reserves the right to refuse publication of any letter in the interest of space or objectionable content. Issues must be of interest to a large portion of Woodhaven and will not express personal conflicts or grievances.

For inquiries regarding the Woodhaven News, or to submit a letter to the editor: NLeffelman@woodhavenassociation.com

ASSOCIATION OFFICE/ESAC

Monday - Saturday | 8:30 a.m.-4:30 p.m.
 Sunday | **CLOSED**

WOODHAVEN LAKES REALTY

Monday - Saturday | 8:30 a.m.-4:30 p.m.
 Sunday | **CLOSED**

REC PLEX

Friday (starting 4/21) | 4 p.m.-10 p.m.
 Saturday | 10 a.m.-10 p.m.
 Sunday | 10 a.m.-4 p.m.

NATURE CENTER

Saturday 4/29 | 10 a.m.-4 p.m.
 Sunday 4/30 | 10 a.m.-3 p.m.

WOODY'S GENERAL STORE

Friday (4/7 opening day) | 3 p.m.-8 p.m.
 Saturday | 8 a.m.-4 p.m.
 Sunday | 8 a.m.-1 p.m.
 Monday - Thursday | **CLOSED**

CAMPSTOVE RESTAURANT

Saturday (starting 4/22) | 8 a.m.-11 a.m.
 Sunday | 8 a.m.-11 a.m.
 Monday - Friday | **CLOSED**

PIZZA PLUS

Friday (starting 4/21) | 4:30 p.m.-7 p.m.
 Saturday | 12 p.m.-7 p.m.
 Sunday - Thursday | **CLOSED**

BAIT SHOP

Saturday | 8 a.m.-4 p.m.
 Sunday | 9 a.m.-3 p.m.
 Friday 4/28 | 9 a.m.-3 p.m.
 Monday - Friday | **CLOSED**

LAKEVIEW/LAKESIDE

Daily | 7 a.m.-Dusk

WOODY'S TRUE VALUE

Monday - Saturday | 8 a.m.-4 p.m.
 Sunday | 9 a.m.-3 p.m.

LAUNDROMAT

24 hours

COMFORT STATIONS OPEN:

3, 9, 17, & 22

CLOSED FACILITIES

Pools/Beach
 Family Center

PLEASE CHECK THE ONLINE FACILITY HOURS CALENDAR AT WWW.WOODHAVENASSOCIATION.COM/FACILITY-HOURS
 FOR MOST UP-TO-DATE SCHEDULES

IMPORTANT PHONE NUMBERS

Association Office Main Number815-849-5209
Public Safety Main Gate815-849-5915
Woodhaven Lakes Realty815-849-5476
ESAC815-849-5371
General Store.815-849-5189
Service Center815-849-5107
Woodhaven Utilities.815-849-5718
Lee County Treasurer815-288-4477
Lee County Recorder815-288-3309





While much of nature hibernates or goes dormant through the winter months, Woodhaven does not. Woodhaven staff and volunteers have been extremely busy throughout the entirety of winter not only getting prepared for 2023, but also providing some special activities not normally offered through the “off-season” in the past.



Since late November, the Recreation Department has been hosting virtual BINGO and trivia nights for Property Owners every Friday night through March on Woodhaven’s website. Each week, they offered a new theme, just like summer weekends, such as Book Trivia, Woodhaven Trivia and Camping BINGO. Winners received a \$10 Amazon Gift Card, which was e-mailed to them at the end of each event. If you did not get a chance to participate in these events, we encourage you to put them on your calendars for next off-season. Those who participated had a great time and it’s an excellent way to stay in touch and keep Woodhaven on your minds if you don’t come out and enjoy Woodhaven winter activities in person.



Additionally, our Recreation YouTube stars Emma and Katie released Arts & Crafts video projects every Wednesday throughout the winter. Projects included DIY crafts such as a Tabletop Foosball Table, Bubble Wands, and Player Card Holders. The great thing about the videos is that they remain in Woodhaven’s YouTube video library and can be revisited and viewed at any time by going to Woodhaven’s YouTube page at youtube.com/@WoodhavenLakes1. We encourage you to go check out the craft videos and to also be on the lookout for another great video project we have planned for the coming season. We will be producing short, but informative, F.A.Q. videos about various Woodhaven departments, facilities, amenities, services, and programs. We are very excited for this project and believe these videos will be great informational tools for both new and veteran Woodhaven Property Owners. If you have a request for an FAQ video you would like to see offered, please don’t hesitate to fill out a Speak-Up Sheet with your idea.

en’s YouTube page at youtube.com/@WoodhavenLakes1. We encourage you to go check out the craft videos and to also be on the lookout for another great video project we have planned for the coming season. We will be producing short, but informative, F.A.Q. videos about various Woodhaven departments, facilities, amenities, services, and programs. We are very excited for this project and believe these videos will be great informational tools for both new and veteran Woodhaven Property Owners. If you have a request for an FAQ video you would like to see offered, please don’t hesitate to fill out a Speak-Up Sheet with your idea.

Also, leaf and brush vacuum pickup will resume on April 15. Please check out our online calendar or app calendar for the most up-to-date information on facility openings and hours of operation.

And when you come out to Woodhaven in April to do some spring cleaning or to enjoy some of our early season recreational events such as the Children’s Easter Egg Hunt on Saturday, April 1 or Spring Fling Weekend on April 29th and 30th, you may see some notable changes. At the Rec Plex, you will no longer need to bring a pocket full of quarters to enjoy all the games offered such as Super Mario Kart, Big Buck Hunter, or NBA Gametime. No, unfortunately, we are not offering free game play, however, the old change machine will be replaced with a game card kiosk. The kiosk accepts both cash and credit cards to purchase credits, which are issued on a reloadable game card for use at the individual games in the arcade.

As you drive around Woodhaven for the first time this spring, you might notice that a new fence has been constructed between the Maintenance Building and Woodhaven Drive to contain the Unacceptable Materials dumpsters. As work on this project continues, all that remains is to install the gate hardware, gate card readers and a few additional surveillance cameras. When complete, users will need to scan their Property Owner passes to access and dump materials into the dumpsters. More procedural information will be provided as we get closer to project completion and implementation. Also in this area, plenty of earth and dirt has been moved to reshape and redirect the stream feeding Bass Lake to slow the flow of water and reduce the amount of erosion materials entering Bass Lake. Work will continue by Martin Excavating in this area through 2023, including cleanout of the sediment basin, and the area will ultimately be restored with a variety of natural plantings. As this work continues, you may see equipment in this area throughout the summer months until the work is completed. Another project was started along the new improved trail in Section 23 on Woodhaven Lake where riprap was installed to help stabilize the shoreline and trail. Although this work is mostly complete, there is still a small section that needs attention, and will be completed as weather permits.

Speaking of moving dirt, the Maintenance Department recently hauled approximately 20 loads of dirt from the dredge spoils pile in Section 21 to fill in and build up the grassy area at the rear area of the Pavilion. This was done, from suggestions submitted through the Speak-Up Sheet Program, so those who prefer to rest beneath the stars when enjoying bands and live entertainment sit a bit higher, making it a tad easier to see the Pavilion stage. And from the looks of the awesome entertainment schedule at the Pavilion this coming season of your “Sweet Escape”, including Woodhaven-favorite acts such as Chicago Latin Groove and Anthem, along with newcomers Moonshine Brothers All Star Band and Feel Good Party Band, folks are going to want the best view possible!

Live musical entertainment isn’t exclusive to the Pavilion. Back



As the off-season planning, projects and fun activities comes to an end, it means we are moving into the fringes of the summer recreation season. In April, many of the seasonal facilities begin to open including the Bait Shop (April 1), General Store (April 7), Rec Plex (April 21), Restaurant (April 29), Nature Center (April 29), and the remaining Comfort Stations that were shut down for the winter.

by popular demand, several “Friday Night Live” sessions are scheduled for 2023 at the Lakeview Building stage—May 26 (Memorial Day Weekend), July 7, July 21, and September 1 (Labor Day Weekend). These sessions are a great opportunity to bring a lawn chair, a cooler full of your favorite beverages, and just relax on a Friday night while listening to some laid-back live music. And while you are there, take time to check out the recent upgrades made to the upstairs deck and stairs railing at the Lakeview Building.

While there is no doubt that plenty of projects were completed this past off-season, as mentioned there are many still needing completion as well as new projects in the works for 2023. Other significant and notable projects slated for Fiscal Year 2023-2024 include:

- Replacement of the underground fuel storage tanks and gas pumps at Woody’s Services Center. This work is slated to be completed in November 2023 and will shut down fuel dispensing operations for several weeks during this time.
- Replacement of Pool 1 and Pool 2 heaters and pumps and filtration system as well as new kiddie pool features.
- Extended paving of the Open Air Market Trail to improve accessibility.
- Renovation of the Section 22 Playground.
- Completion of striping at the new pickleball courts in the Rec Plex area.
- Installation of new furniture at the Family Center.
- New fishing pier on Bass Lake in Section 4.

We hope you are as ready and looking forward to the 2023 season as we are. If you have any questions about upcoming programs, event weekends, facility schedules or other fun Woodhaven happenings, please check out our website at woodhavenlakes.com or our mobile app, which can be downloaded in the Apple or Google Play stores. And if you have any questions about any of the upcoming projects mentioned, please don’t hesitate to give us a call at the Association Office at 815-849-5209.



WE MAKE BANKING EASIER
SO YOU CAN ENJOY MORE TIME WITH
FAMILY AND FRIENDS

1 FIRST STATE BANK

firststatebank.biz • 800.362.9623

Member FDIC



SnK Electric

815-570-7196
25+ years experience
Lic.# 1862 & 197

Service Upgrades
New & Old Work
Meter Pedestals
Violations Corrected
Trenching
Water & Sewer Extensions
& More!

WOODY SAYS.....



Have you changed the batteries in your smoke/CO² detectors?

Gene's Lawn Service

Retaining Walls, Patios, & Walkways
 Landscaping | Tree Trimming
 Mulching | Mowing
 Power Washing
 Spring Clean Up | Fall Clean Up

815-671-1542 | gl8794@icloud.com



Please Call for an Appointment

Monday-Saturday | 8:30 a.m.-4:30 p.m.

Sunday | CLOSED



815-849-5476

Last updated:
3/10/2023

Bonita Willis - ePRO, C2EX, Designated Managing Realtor®

Mary Lovgren - Realtor® Broker
 815-994-1449 | marylovgren@gmail.com

Nicci Leffelman - Realtor® Broker
 815-501-0408 | NLeffelman@woodhavenassociation.com

Justin Wiley - Realtor® Broker
 815-849-5390 | JWiley@woodhavenassociation.com



305 W Washington
CONTINGENT

LaMoille

Don't miss out on this pristine, open floor plan situated in a quiet neighborhood! Home was custom built for the original owner who kept home in like-new condition, and it shows! Main floor has 3 bedrooms, full bath with jet tub, separate shower and laundry, and open kitchen/living/dining area. Kitchen boasts beautiful oak cabinetry and new hardware as well as new appliances. Basement features a family

room, full bath, 2 bedrooms, and storage/work space. Enjoy the outdoors on the 3-tiered deck with pergola in private backyard surrounded by over 30 mature spruce trees. Plenty of storage between closets, basement, and under-deck shed. **\$189,900**



421 E Bluff ST

Amboy

A lovely maintained home within walking distance of downtown, the library, and the park. Recent upgrades include a new sidewalk and new garage doors installed in 2022. This home offers a living/dining room combo, two bedrooms, a full bathroom, a kitchen with an eating area and a large family room on the main floor. The partially finished basement includes a large family room with a bar, laundry room, large multi-purpose room, and additional bathroom/shower facilities. The breezeway offers additional storage or a cozy sitting area and leads to the attached large two car garage. The garage includes a work table, several cabinets/shelving and attic storage space with a pull down ladder. This home is a must see! Call to schedule a showing today. **\$125,000**



415 W Cherry St

NEW

Compton

This listing offers a cozy 3 bedroom 1.5 story home on a corner lot. Great starter home or investment! Newer furnace, AC and metal roof installed. Also included with the home is a detached concrete block building. **\$96,000**



2532 Johnson St

W. Brooklyn

This charming home sits on a corner lot closely located to downtown West Brooklyn. The home offers 4 bedrooms with the master bedroom on the first floor and a one car detached garage. Recent updates include new flooring and paint throughout the home and the bathroom updated. The front porch and backyard also offer great space for spending time with friends and

family or just enjoying the fresh air. Call for a showing today!
\$124,000

JLS Insurance Agency

815-434-4475

REPLACEMENT COST COVERAGE

AVAILABLE ON MOST UNITS

ASK ABOUT A DISCOUNT IF YOU ARE AGE 50



Hennepin 815-925-7373
 Ladd 815-894-2386

OUR LENDING TEAM IS READY TO HELP YOU ACHIEVE YOUR FINANCIAL GOALS

Great Rates - Excellent Options

CALL TODAY or APPLY ONLINE



www.northcentralbank.com

Listings available at: woodhavenlakes.com | realtor.com
zillow.com | trulia.com

BOARD ACTION REPORT

The following actions were taken or reported by the Board of Directors at their February 16th, 2023 Meeting.

Full meeting minutes will be posted to the Members tab on our website after approval at the March 14th meeting.

1. Motion was made to approve the January 23, 2023 – Board of Directors’ Meeting Minutes with a correction to the motion under New Business, item G 3 to read as follows: Chris made a motion to approve the purchase of two 2023 Chevy Colorado’s from Vaessen Brothers Chevrolet for a cost of \$74,817 with a not to exceed total cost of \$85,500 “including” the additional equipment needed for these vehicles. Motion passed unanimously.
2. Motion was made to approve the January 23, 2023 – Board of Directors’ Executive Session Minutes. Motion passed unanimously.
3. Motion was made to add under New Business, item 6. Section 21-99/100/101 – Suspension of Privileges Review. Motion passed unanimously.
4. Motion was made to allow Class I eBikes with no restrictions of usage on Woodhaven roadways. Motion passed with 5 ayes and 1 nay.
5. Motion was made to approve the purchase of a transit van between the years of 2018 – 2022 with low mileage and a not to exceed budget of \$48,000 including tax, title, and license. Motion passed unanimously.
6. Motion was made to approve the technical evaluation with BAI for Pool 1 and Pool 2 along with state permitting for a not to exceed cost of \$22,000. Motion passed unanimously.
7. Motion was made to authorize Woodhaven management to award the audit services to Clifton Larson Allen for a not to exceed cost of \$62,000 and proceed with getting an engagement letter from CLA and permitting Jeff Hickey to sign the agreement. Motion passed unanimously.
8. Motion was made to amend the contract with Martin Excavating to allow completion of all three Phases of the erosion control trail work in Sections 8 and 9 and including cleaning out the catch basins. The catch basin portion of the contract will be reduced from \$65,000 to \$55,500. Motion passed unanimously.
9. Motion was made the suspension of privileges for Steve Nation, Section 21 Lots 99/100/101 ends today, February 16, 2023, under the condition he remains on probation for a period of one year and any other Public Safety citation will require a Board of Directors’ review. Motion passed with 5 ayes and 1 abstention.

THE COMMUNICATIONS COMMITTEE

- ...reminds veterans to submit their information for the Veterans Honor Roll.
- ...reminds Owners leaf/brush pick up begins April 15.
- ...reminds Owners to change the batteries in their smoke/CO2 detectors.



Sublette Baloon Inc.
(815) 849-5470
1831 Tower Rd

Like us on Facebook!

OUTDOOR PATIO BIG SCREEN TVS GAMING MACHINES

LUNCH & DINNER SPECIALS DARTS DAILY DRINK SPECIALS



LEFFELMAN & ASSOCIATES INC.

HOW'S YOUR AGENT WORKING FOR YOU?
We are local, we know Woodhaven,
and we answer our phones!

See one of our park model and travel trailer insurance specialists today!



MOTOR HOME | PARK MODEL | TRAVEL TRAILER | RECREATIONAL VEHICLE | BOAT

815.849.5219 | 111 W MAIN ST, SUBLETTE, IL
LAMOILLE 815.638.2171 - AMBOY 815.857.2125
WWW.LEFFELMANASSOC.COM

Trusted Choice®

Our Family Protecting Your Family

Roemmich Resort Homes

1867 Tower Road, Sublette, IL 61367
www.roemmichresorthomes.com--815-849-5577

We Make Camping...Home!



Woodland Park-Parkmodels
Room Additions-Decks-Sheds-Driveways
Water, Sewer & Electric Extensions
Winterizing

BOARD & COMMITTEE MEETINGS

**Meetings are subject to change, please check our website to view the most up-to-date schedules before attending a meeting.*

Please see the online Event Calendar for details. Board meeting agendas will be posted to Facebook prior to each meeting.

MARCH

14th	Board of Directors' Meeting, NIU Conference Center	7:00 p.m.
18th	Section Reps Meeting, Woodhaven	9:30 a.m.
20th	Finance Committee Meeting, Via Zoom	7:00 p.m.
28th	Board of Directors' Meeting, NIU Conference Center	7:00 p.m.

APRIL

11th	Board of Directors' Meeting, NIU Conference Center	7:00 p.m.
15th	Communications Committee Meeting, Woodhaven	8:00 a.m.
15th	Section Reps Meeting, Woodhaven	9:30 a.m.
25th	Board of Directors' Meeting, NIU Conference Center	7:00 p.m.

MAY

6th	Facilities Planning Committee Meeting, Woodhaven	11:00 a.m.
20th	Communications Committee Meeting, Woodhaven	8:00 a.m.
20th	Finance Committee Meeting, Woodhaven	8:00 a.m.
20th	Section Reps Meeting, Woodhaven	9:30 a.m.
27th	Board of Directors' Meeting, Woodhaven	9:00 a.m.

*Meeting Location: Northern Illinois University
Naperville Conference Center
1120 E. Diehl Rd. Naperville, IL 60563*



DELIVERED & INSTALLED

3 Trees For \$600.00

- Trees Staked & Mulched
- One Year Warranty
- Over 35 Different Varieties



Bulk Mulch, Stone, Sand & Compost Available



1200 N Galena Ave. Dixon, IL • 815.288.6060

Woodhaven's Honor Roll of Veterans

We are continuing to seek the names of Woodhaven Property Owners and their immediate family who are US veterans or active duty. We will be adding to the list we compiled in 2019 and 2020 - if you submitted your info already, we will continue to include you. The Association would be honored to post these names in the *Woodhaven News*. You can fill out the form and return it to the Association Office, online [here](#) or you can send us a message through Facebook. We will continue to accept submissions and publish the list annually.

Thank you for your time and thank you for your service to our country!

Woodhaven's Honor Roll of Veterans

Name: _____

Section: _____ Lot: _____

Branch of Military: _____

Wars Served or Peacetime: _____

Additional Information: _____



Woodhaven News Classified Ad Request

We will run your personal classified ad for \$5 per monthly issue (40 words Max.)

Mail this form to:

Classified Ads, Woodhaven News, P.O. Box 110, Sublette, IL 61367

**The deadline to place a classified ad is the 1st of the month prior to the issue desired*

**All ads must be prepaid*

**Businesses may not place classified ads*

Please run this ad for the months of: _____

Amount enclosed: \$ _____

Sec/Lot	Violation	Sec/Lot	Violation
2/77	Exposed wires and items stored under RV; RV siding damaged	16/186	PVC separating; rotten wood on deck; RV seam open
2/140	RV/deck less than 15' from front; no glass/screens on room	17/3	Shed less than 5' from 3/2 line
2/143	RV seams open; floor of RV tip-out falling	17/78	Vinyl on RV door loose
2/152	No permit for dog run; dog run less than 7' from 152/151 line	17/84	RV seam open; trim missing from RV door
2/206	Building materials – miscellaneous blocks	17/97	Exposed wire on side of deck
3/122	RV permit not complete – needs survey; ext cord plugged in	17/258	739.5 sq ft patio on lot; no permit for pond; lights in trees
3/146	RV less than 7' from 146/147 line	17/262	Rotten wood on shed; shed door not closing; bldg materials
3/249	Rotten wood on shed; shed door not closing properly	18/12	Shed wall separating; shed door not secure; RV door missing trim
4/22	Hole/rotten wood on shed; shed siding separating; bldg material	18/13	RV condition – broken window, seam open, tape on siding
4/96	Wood and blocks on RV roof vent	18/35	Building materials including blocks and plywood
5/78	Plastic pipe covering flex line; exp plate on moped	19/29	Canvas not removed from portable overhead
5/157	Hole in NEMA3; building materials – landscape timbers	19/33	Open in face plate of meter box; rotten wood on overhead
5/170	Straps around trees supporting firewood containment	19/99	RV condition – open seams, damaged siding, damaged awning
5/200	Canvas not removed from portable overhead	19/106	RV 5' from 106/105 line
5/292	Holes/rotten wood on shed; shed door not closing; no face plate	20/5	RV seam open; open around shed door; bldg material - blocks
5/323	Permit for RV not complete – survey needed	20/25	Broken window on RV; face plate in meter box not secure
5/410	Deck permit not complete-survey needed	20/71	RV seam open; building materials – blocks
5/490	Exposed wire on RV cord; RV awning damaged; inapp storage	21/162	Room permit expired-180 days; no siding on room; bldg material
5/506	Flex line not secured to sewer inlet	21/184	Building materials – plywood, lattice
8/26	Plywood patch on RV skirting/not secure; skirting separating	21/204	Room exceeds 12' height; overhead supported by shed soffit
9/6	Building materials – landscape blocks	21/221	Broken window on room; exposed wire out of ground
9/70	Wood patch on vinyl shed	22/66	Building materials – concrete blocks, decking, railing
9/103	Shed door not closing; damaged shingles on shed; bldg materials	23/91	RV less than 7' from 91/92 line; tape on sewer inlet
9/169	Rotten wood on shed; lights supported by trees; inapp storage	24/43	No caps on RV port/sewer inlet; no cover on RV vent; bldg mat
9/203	RV 3' from 203/202 line; RV awning damaged; bldg materials	24/97	No Lee County permit/fee for overhead; locker 9' from front
9/221	Building materials – concrete blocks, patio blocks, PVC pipe	24/141	Room permit not complete; tape on RV service door; RV seam open
10/80	No face plate in meter box; building materials – railroad ties	24/245	RV awning damaged
10/91	Wood covering box at meter; rotten wood on shed	25/10	Shed door not closing; open at bottom of shed door
10/113	LP tank over 113/112 line	25/35	Shed less than 5' from 35/34 line; rotten wood on shed
10/247	Rotten wood on screen room	26/44	No permit for AC or LP; LP next to AC; hole in shed; bldg material
11/191	Hole in shed door; inapp storage – metal fencing, plastic totes	26/47	NEMA3 not secured to post; damaged siding on RV
11/192	Damaged outlet; exp wires under deck; rotten wood on shed	26/157	Holes/rotten wood/damaged shingles on shed roof
12/3	Hole/moss/deteriorated shingles on shed; RV seam open	26/208	Shed demo permit expire; rotten wood floor debris on lot
12/63	Shingles missing from shed; holes in shed; rotten wood on room	27/46	Cover on RV roof A/C damaged
12/64	Hole/rotten wood on shed; trim missing from RV door	27/59	Window on RV not secure; int of RV deteriorated; inapp storage
12/65	Rotten wood on shed	27/72	No permit for hot tub; tarps on ground
13/88	Broken window on room	27/76	Shed less than 5' from side and rear lines
13/97	Metal siding on RV pad	27/164	Broken glass on patio door; deteriorate retaining wall
14/29	Exposed wire at NEMA3; exposed outlet on room; damaged roof	28/42	Shed roof deteriorated; rotten wood on shed; fire pit not set
15/151	RV roof repair unacceptable; sewer line not connected	29/5	Exposed wire out of ground; shed roof damaged; bldg materials
16/93	Building materials including metal pipes	29/109	Fire pit 3'9" from rear line
16/119	Broken vent on RV; building materials – particle board	29/200	Ramp less than 7' from line; exposed wire on RV; holes in shed
16/149	Vinyl on RV door loose; building materials – shingles, lumber	29/221	RV seam open; RV roof A/C damaged; RV skirting damaged
16/151	RV less than 7' from line; trampoline in out lot; damaged awning	29/258	Soffit of room is open/deteriorated
		29/260	Shed less than 5' from rear line
		29/299	No cap on sewer inlet
		29/314	Material used to repair RV roof A/C unacceptable
		29/373	No face plate in NEMA3 box

OBITUARIES



Dean R. "Dyno Dean" Stephenitch age 68 of Sublette died on Sunday Feb. 26, 2023 at his home. He was born on Oct. 8, 1954 in Sublette the son of Robert and June (Goy) Stephenitch. Dean owned and operated his mowing and landscaping business, working on many recreational, residential, and commercial properties at Woodhaven and the surrounding areas. He loved his family, and collecting toy tractors. He spent much of his time helping

with many fundraisers for people and organizations in need. He was also a co-founder of the annual Sublette Farm Toy Show and was involved with the show for over 37 years. Dean married Susan Kalinoski on Nov. 22, 1986 in Amboy, IL. He is preceded in death by his parents Bob and June, and brother Scott Stephenitch. Dean is survived by his wife Susan, two sons Robb (Alissa) Stephenitch of Woodridge, IL, Joey Stephenitch of Sublette, two grandchildren T.J., and Madi. He is also survived by his siblings Terry (Deb) Stephenitch of Dixon, Charles (Karen) Stephenitch of Dixon, Ronald Stephenitch of Dixon, Diane (Roger) Truckenbrod of Sublette, and many nieces and nephews. Cremation rites have been accorded with a celebration of life to be held on Friday March 31, 2023 from 4:00 PM to 8:00 PM at the Mihm-Jones Funeral Home in Amboy. In Lieu of flowers memorial donations can be made to the American Kidney Fund, and Teen Turf in Amboy. Arrangements by the Mihm-Jones Funeral Home in Amboy.

PUBLIC SAFETY CITATIONS - FEBRUARY

Sec/Lot	Owner/Guest	Offense
29/233	Owner	Speeding



"GREAT DEALS - GREAT SERVICE SINCE 1926"
VAESSEN BROTHERS CHEVROLET, INC.
 HIGHWAY 52
 SUBLETTE, IL 61367
 800-227-5203

Check out our selection of New & Used Cars, Trucks, Crossovers, & SUVs

We service all U.S.

Cars, Trucks, Vans, Crossovers, SUVs, & Motorhomes
 Service Hours: Mon-Fri 7a.m.-5 p.m. | Sat. 7 a.m.-12 p.m.

800-227-5203 | 815-849-5232 | vaessenbrothers.com

Minutes from Woodhaven Lakes - Route 52 in Sublette

SECTION REPRESENTATIVES & ALTERNATES

SECTION	REPRESENTATIVE	ALTERNATE
Section 1	Nancy Nieslawski	Alex Esparzal
Section 2	Pat Sirbas	Jane Elliott
Section 3	Maria Dellegrazio	Judy Gonzalez
Section 4	Gregg Swanstrom	Pamela Smith
Section 5	Marcia Kosowski	Diane Koepfel
Section 6	Michael Flanigan	Pat Winters
Section 7	Karen Larson	Lee Patterson
Section 8	Linda Smith	Mary Muir
Section 9	Jack Meyers	
Section 10	Bob Palatine	Tony Lona
Section 11	Dawn Anama	Rose Galarza
Section 12	Heather Hansen	
Section 13	Shannon Eaden	Jedd Eaden
Section 14	Jeraldine Elliott	
Section 15	Nancy Jackson	Elaine Ayres
Section 16	Ernest Mitchell	Janice Pepon
Section 17	Jose Navarro	Darlene Singleton
Section 18	Rosemary Colness	Joanne Lencki
Section 19		Mike Connelly
Section 20		Shaunta Stocking
Section 21	Todd Moffett	Kim Gibas
Section 22	Kathy Brush	Rita Olsen
Section 23	Brenda Kriss	Phyllis Sippel
Section 24	Laurie Picha	
Section 25		
Section 26	Angel Flores	
Section 27	Charlene Hill	
Section 28		
Section 29	Chris Pontrelli	Patrice Riemann

WELCOME NEW PROPERTY OWNERS - FEBRUARY

"Welcome" new Woodhaven Property Owners and families. Please stop at the Association Office and pick up your new Membership packet.

Sec/Lot	Name	City/State
3/244	MICHELLE & RAFAEL ROMAN-GARCIA	GLEN ELLYN IL
4/90	MARY KOLODZIEJ & PHIL KOUTNIK	SCHILLER PARK IL
20/4	LINDA KISH	DIXON IL

REGISTERED SEX OFFENDER LIST

Robert Hipshur-Sec. 21, Lot. 33
 William Dubois-Sec. 17, Lot. 122-123

Gravel Pads & Driveways — GreaseMonkeyProducts.com
 Tom Rominski 847-276-8110

Fall / Spring Cleanup
 Dumpster Service
 ESAC Violations
 Power Washing
 Bobcat Work



Grease
Monkey
 Products

WOODY'S TRUE VALUE REPORT *eli bugarin, lp manager*

120gl Vertical Storage Tanks have just arrived!

They are first come first serve.

- Horizontal Package starting at \$1700
- Vertical Package starting at \$1900

Packages include tank, regulator, gas, copper line, and fittings. Any questions or inquiries please call Scott or Eli at the Service Center. (815)849-5107



SAFETY TIP **WOODY INC.** *True Value.*

When you visit Woodhaven Lakes, make sure the first and last thing you do is check your propane tank! You could be in for a very unpleasant night if you happen run out.



Portable Buildings & Carports

Boondocks Barns
302 E Harper Ave
Granville IL 61326

815-780-0561

QUALITY
from the inside out



Design Consultation
Site Prep
Shed Relocation
Design Online
Financing & Rent To Own

www.boondockbarns.com



815-849-5424

Located just off US Rt. 52

One mile North
of Green Wing Rd.

Kids 13 & Under Play FREE!*

Loaner Clubs are Available! Parents accompanying young children can pay 3-hole (\$5) and 6-hole (\$7) rates! No Other Discounts Apply to this Special.*with paying adult

• Live Video Gaming •

Visit us at www.shadyoaksgcc.com
to schedule tee times
and check the event calendar!
Like us on Facebook!

Shady Oaks reserves the right to refuse service to any golfers who cause damage to our property, including the course and golf carts or who have violated Shady Oaks rules or have broken County or State regulations.

Proposed Changes to Rules & Regulations

The staff and Board have reviewed several sections of the Rules & Regulations over the last several months and are proposing changes to provide better clarification to the documents. Language proposed to be eliminated will appear with a strikeout, while new language will be shown in red.

Please keep in mind; this is a draft document subject to further changes right up to the time of adoption.

Property Owners wishing to comment on the proposed changes may do so in writing, either in a Speak Up Sheet or simply sending an email through www.woodhavenassociation.com; or mail it to: Woodhaven Association, P.O. Box 110, Sublette, IL 61367. As a Property Owner you may comment directly to the Board of Directors under Member Business from the Floor during a Board Meeting.

Article II. Use of Motorized Vehicles

Section 1. Vehicle Restrictions

Use of roadways shall be restricted to vehicles licensable in the State of Illinois. Other drivable common properties shall not be driven upon except for those areas and those personnel designated by the Board of Directors for specific uses.

- A. Electric Personal Assistive Devices. Devices with a maximum speed of 10 mph or less, used by handicapped or physically challenged individuals as documented by a physician's statement or a State document, may be permitted upon application through the Association Office. Users of such devices will be subject to all duties applicable to a pedestrian and must travel on the left side of the road.
- B. Licensed Mopeds, Scooters, and Motorcycles. Mopeds, scooters, and motorcycles are allowed a passenger only if it is equipped from the factory complete with pegs and seating to allow an adequate and safe riding position. Passenger riding in front of the operator is prohibited.
- C. Non-licensed, gas powered, off road, or all-terrain vehicles shall not be operated on campsites.
- D. All passengers must be confined within the passenger area of a motor vehicle; when riding in the pick-up truck bed all passengers must be seated within the bed of the truck with the tail gate closed.
- E. No person shall operate any motor vehicle in a reckless manner; including but not limited to, swerving on the road and repeatedly veering off the roadway or driving too fast for conditions, with willful or wanton disregard for the safety of persons or property.
- F. No person shall operate a motor vehicle when there are more passengers than the vehicle was designed for; or when the number of passengers seated in the front obstructs the view of the driver or his/her control over the vehicle.
- G. **Low-Speed Electric Bicycles (e-Bikes).** The State of Illinois recognizes three classifications of low-speed electric bicycles. They are:
 - "Class 1 low-speed electric bicycle" means a low-speed electric bicycle equipped with a motor that provides assistance only when the rider is pedaling and that ceases to provide assistance when the bicycle reaches a speed of 20 miles per hour.
 - "Class 2 low-speed electric bicycle" means a low-speed electric bicycle equipped with a motor that may be used exclusively to propel the bicycle and that is not capable of providing assistance when the bicycle reaches a speed of 20 miles per hour.
 - "Class 3 low-speed electric bicycle" means a low-speed electric bicycle equipped with a motor that provides assistance only when the rider is pedaling and that ceases to provide assistance when the bicycle reaches a speed of 28 miles per hour.
 1. Class 1 low-speed electric bicycles, as defined in the Illinois Vehicle Code, are recognized and allowed to be operated as a bicycle within Woodhaven.
 2. Class 2 and Class 3 low-speed electric bicycles are prohibited from operating within Woodhaven.

Licensed Wildlife Control, LLC



Beaver • Raccoon
Groundhogs • Bats
Skunk • Moles • and More!

Art Albee

815.857.3989 | 815.535.2882 | artalbee@hotmail.com | Amboy

K&P GRASS CUTTERS

PUSH MOWING SERVICE
SPRING CLEAN UP

MONDAY - THURSDAY

LEAVE MESSAGE & LOT # FOR
ESTIMATE & REPLY

773-250-0920



**A RESOLUTION OF THE BOARD OF DIRECTORS
OF THE WOODHAVEN ASSOCIATION**

2023 Meeting Schedule

WHEREAS, the Woodhaven Association ("Association") is governed by and through a duly elected Board of Directors ("Board") pursuant to the Declaration of Covenants and By-Laws; and

WHEREAS, Article VII Section 5 Meetings of the Board of Directors states, "The Board shall meet at such,

Times as the Board shall determine by resolution, but no less than 4 times annually"; and

WHEREAS, the Board wishes to modify their 2023 meeting schedule, the second Board meeting of each month will be changed to Tuesdays starting with the March 28, 2023, meeting.

NOW THEREFORE, BE IT AND IT IS HEREBY RESOLVED AS FOLLOWS:

Day	Date	Location	Time
Tuesday	January 10th	NIU Conference Center, Naperville	7:00 p.m.
Monday	January 22nd	NIU Conference Center, Naperville	7:00 p.m.
Thursday	February 16th	NIU Conference Center, Naperville	7:00 p.m.
Monday	February 27th	NIU Conference Center, Naperville	7:00 p.m.
Tuesday	March 14th	NIU Conference Center, Naperville	7:00 p.m.
Tuesday	March 28th	NIU Conference Center, Naperville	7:00 p.m.
Tuesday	April 11th	NIU Conference Center, Naperville	7:00 p.m.
Tuesday	April 25th	NIU Conference Center, Naperville	7:00 p.m.
Saturday	May 27th	Woodhaven	9:00 a.m.
Saturday	June 24th	Woodhaven	9:00 a.m.
Saturday	July 22nd	Woodhaven	9:00 a.m.
Tuesday	August 8th	NIU Conference Center, Naperville	7:00 p.m.
Sunday	August 27th	Woodhaven Annual Meeting, RecPlex	11:30 a.m.
Sunday	August 27th	Woodhaven - Following the Annual Meeting	1:00 p.m.
Tuesday	September 12th	NIU Conference Center, Naperville	7:00 p.m.
Tuesday	September 26th	NIU Conference Center, Naperville	7:00 p.m.
Friday	September 29th	*Woodhaven – Budget Workshop, RecPlex	7:00 p.m.
Saturday	September 30th	*Woodhaven – Budget Workshop, RecPlex	9:00 a.m.
Tuesday	October 10th	NIU Conference Center, Naperville	7:00 p.m.
Saturday	November 11th	*Woodhaven – Budget Hearing, RecPlex	1:00 p.m.
Tuesday	November 14th	NIU Conference Center, Naperville	7:00 p.m.
Tuesday	December 12th	NIU Conference Center, Naperville	7:00 p.m.

2. That this Resolution shall be in force and effect from and after its passage and approval.

PASSED AND APPROVED THIS 14th DAY OF MARCH 2023.

AYES: Laura Packwood, Charlie Muir, Harry Koeppel, Dan Rossi,
John Shefcik, Chris Collins and Diane Connelly

NAYES: _____

ABSENT: _____

Daniel Rossi, President

ATTEST: Charles Muir, Secretary

401 N Pennsylvania Ave
Sublette, IL

815-849-5532



*CVM Marinated Meats
Easy to Cook, Tasty to Eat*

**Spend more
time camping, order
online! Easy Pick-Up.**
countryvillagemeats.com

Winter Hours:
Mon-Fri: 8am-5pm
Sat: 8am-12pm
Summer Hours Begin 4/22:
Mon-Fri: 8am-5pm
Sat: 8am-4pm



**Wood Decks | Room Additions
Screen Rooms | Steel Roofing
Windows, Doors, Siding**

815-326-0869 | curts@frontier.com

**NIGHTENGALS
THRIFT SHOP**

708 JEFFERSON ST. MENDOTA IL, 61342 | (815)539.6100

STORE HOURS

STORE AND CLINIC
HOURS ARE:
MON, WED, THURS,
FRI, SAT.
12PM - 3:30 PM



**WE SUPPORT:
TRINITY HEALTH
CARE & FREE
SUMMER
SWIMMING AT
MENDOTA POOL**

SUNCOAST TRAILER SALES



574-594-9000 / 800-434-7330

7839 E. 250 S. PIERCETON, INDIANA



"We Won't Be Beat On Price"

FINANCING
AVAILABLE

Website: www.SuncoastRvTrailerSales.com

PARK MODELS / RV DESTINATION TRAILERS

WOODLAND PARK / ELEVATION HOMES

FAIRMONT HOMES / QUAILRIDGE / CANTERBURY

LUXURY SANDPIPER DESTINATION TRAILERS



MIDWEST LARGEST PARK MODEL DISPLAY

Important Information About Tornado Sirens

Sirens are for OUTDOOR warning purposes and are not meant to be heard indoors.

Hearing a siren is a signal to get indoors and seek additional information.

It does NOT mean the threat has ended when the sirens stop sounding.

Sirens are activated by city or county officials, not the National Weather Service.



NWS Chicago weather.gov/Chicago



Graphic created by
NWS Kansas City, MO

Woodhaven Weather Alert Siren Info

Here is a quick refresher on Woodhaven's procedures for weather notifications and tips for taking shelter during inclement weather at Woodhaven.

- » Note there is NO all clear siren, you should use your own judgment for leaving sheltered areas. Our procedures are mirrored after other cities and municipalities. In fact, NO municipalities in Illinois have "All Clear" signals, as weather is unpredictable.
- » We cannot tell you what the safest option is for you, personally. All comfort stations and any OPEN facilities will be available for shelter. But please keep in mind that traveling in vehicles can be just as dangerous.
- » Have a Plan! Practice your family's procedure and make sure all members know what to do in case of inclement weather.
- » Invest in a weather radio and have plenty of batteries. The most up-to-date info will be released through the NOAA weather radio and the National Weather Service.

The objective of Woodhaven's Siren procedures provides advanced warning for staff and general Woodhaven public of conditions present for the development of a tornado/funnel cloud in the immediate Woodhaven Lakes area. The sirens warn to say tuned to local weather reports and to be prepared to take cover. Please remember, these are outdoor warning sirens and are not meant to be heard when indoors.

The sirens are activated when:

- » Woodhaven Lakes receives a report by the NOAA weather radio, TV report, or public radio from the National Weather Service of a tornado warning that includes the following areas: Amboy, Sublette, Woodhaven Lakes, southeast or southwest parts of Lee County.
- » A phone call from the Lee County Amateur Radio Emergency Service (ARES) or Lee County Sheriff's Department that a funnel cloud or tornado is heading toward Woodhaven.

Reminder - Sirens are tested the first Tuesday of each month at 10 a.m., barring inclement weather. In inclement weather, testing is moved to the following week.



MONDAY		TUESDAY		WEDNESDAY		THURSDAY		FRIDAY		SATURDAY		SUNDAY	
MARCH M T W Th F S Su 1 2 3 4 5 6 7 8 9 10 11 12 13 14 15 16 17 18 19 20 21 22 23 24 25 26 27 28 29 30 31				MAY M T W Th F S Su 1 2 3 4 5 6 7 8 9 10 11 12 13 14 15 16 17 18 19 20 21 22 23 24 25 26 27 28 29 30 31						1 Egg Celebration Kids' Egg Hunt Painting Party Rec Plex Open		2	
3		4		5		6		7		8		9 EASTER	
10		11		12		13		14		15		16	
Board of Directors' Meeting 7pm NIU Conf. Center										Leaf Vacuum Begins			
17		18		19		20		21		22		23	
								Rec Plex Open		EARTH DAY Rec Plex Open		Rec Plex Open	
24		25		26		27		28		29 Spring Fling Weekend		30	
Board of Directors' Meeting 7pm NIU Conf. Center								Rec Plex Open		Tree Sale & Give Away Farmers Market Ticket Tent Fishing Tournament Painting Party Silent Boat Auction Rec Plex Open		Open Market Prize BINGO Ticket Tent Fishing Tournament Rec Plex Open	



RECREATION & ACTIVITIES

Open Air Market 2023

Registration is now open for the 2023 market season! We are looking forward to being able to host a safe and fun event for all! The dates for the 2023 season will be:

Sunday, April 30 – Spring Fling Weekend

Sunday, May 28 – Memorial Day Weekend

Sunday, July 2 – July 4th Weekend

Saturday, August 5 – Main Event Weekend

Sunday, September 3 – Labor Day Weekend

Sunday, October 8 – Fall Fest Weekend

We will accept registrations for the Open Air Market on a first come, first served basis until the spaces have been filled or until the registration deadline, Monday two weeks before the event. Registration is available online at: <https://woodhavenassociation.com/open-air-market/>

The Open Air Market will take place in the same location, on the flat, shady area near the horseshoe pits. In this area, the only bathroom access available is handicapped accessible porta-johns. Rec Plex bathrooms are over 100 yards away. Please keep this in mind when registering for the Open Air Market.

As always, vendors must purchase enough booth space to accommodate their vehicles and/or trailers. There are no preferential spots for those with large trailers, and we encourage vendors to keep this in mind when sending in their registration form.

Note: If you are selling items through a multi-level marketing company, please note we do not limit the number of vendors per show; there is a potential for multiple vendors from the same company.

We would like vendors' help in continuing to focus on the efficiency of our Check-In process. We need to make sure those vehicles that are dropping off supplies and parking elsewhere are not blocking the access path while they are unloading. Vendors must please be aware of their vehicle, so that our Check-In process can continue while they are unloading.

CHILDREN'S EASTER EGG HUNT

Saturday, April 1st

Easter Events 11 a.m.-2 p.m.

Rec Plex open 10 a.m.-4 p.m.

Hop on over to the Rec Plex for the Annual Easter Egg Hunt! Registration and Check-In will take place at the Rec Plex Multi-Purpose Room starting at 11 a.m. The cost of the Easter Punch Pass will be \$5 per child. From there the hunt will begin through the grassy areas surrounding the Rec Plex. Everyone will receive a special prize. We will also offer a special section of the egg hunt geared towards our younger participants (ages 3 and under) who may not be ready for the "big" kids hunt. After the egg hunt, stop by the Creation Station where we will be having a craft. The Creation Station (Arts & Crafts Room) will be open for children to make an Easter craft. (This is included in the egg hunt fee.) Children will be treated to a snack and drink as well. Bring your camera and capture the memories of your little ones enjoying this favorite Woodhaven activity. Be sure to see the Easter Bunny who will be hopping around at the activities!

Spring Fling Weekend April 29th-30th

Planning is underway for Woodhaven's annual Spring Fling Weekend. We are in the process of finalizing the schedule of events. Traditional events such as the Open Air Market, children's crafts, food fair, pony rides, horse drawn wagon rides, and the petting zoo will all be held.

TICKET TENT: PONY RIDES, WAGON RIDES, & PETTING ZOO

Woodhaven is the place to be for rides on the horse drawn wagons or saddled ponies. Miller's Petting Zoo will also be on hand this weekend. Enjoy petting baby goats, bunnies, pigs, and many other barnyard animals. All attractions will be running both Saturday and Sunday.

FOOD FAIR

As always you will want to check out all the food vendors. With some old, and some new there are always great food options to explore! Food vendors will be available Saturday & Sunday of Spring Fling Weekend. Details on times and locations will be in the Spring Fling Leisure Times.

TRADITIONAL TREE FARM SALE

Woodhaven Lakes' long running annual Spring Fling Tree Farm Sale offers a variety of trees and shrubs to populate your lot with local plants. All selected trees are conducive to northern Illinois soils and typical weather conditions. Make a small commitment and leave a legacy for all those to follow us. What sense of pleasure and accomplishment you will experience watching them grow! (Prices Vary)

SILENT AUCTION

The Department of Recreation annually turns over six (6) paddleboats from the fleet of eighteen, and two (2) canoes from the fleet of six, used in the operations of the watercraft rental program offered at the Beach. The all-plastic paddleboats and canoes that are up for auction this year are three years old and in good condition. Similar to last year we will also have miscellaneous items added into our silent auction. Be sure to stop and check out what fun items we have for sale!

The opportunity to purchase these boats and other items will ONLY be offered on Saturday (Spring Fling Weekend). The items may be viewed at 9:30 a.m., silent auction procedures will begin at 10 a.m., and will be closed at approximately 10:15 a.m., at the discretion of the Aquatics Manager. All interested bidders will have an opportunity to continue to bid until the Aquatics Manager closes the auction.

How the "Silent Auction" works. Each item will be displayed with a bid sheet on which interested individuals will write their name and the amount of their bid. Each of all of the items being auctioned will start with a minimum bid. Bidding will proceed (silently) on each item, all at the same time, until there are no longer any interested bidders. You may continue to bid as many times as you wish. Minimum bid increases will be \$10. Each item will be sold to the highest bidder. Items will be sold to Woodhaven Property Owners (or guest of) only. Property Owner must be in good financial standing with Woodhaven Association. Payment, in the form of cash or check, must be made at the completion of the Silent Auction. Purchased items must be removed from said location immediately. No advanced bids will be accepted. Bidders must be present on the day of the Silent Auction. Questions or requests for additional information should be directed to Faith Schafer, Aquatics Manager. 815-849-5209, ext. 141.

BINGO SUNDAY, APRIL 24TH

This family favorite is back again! All ages are encouraged to play, and prizes will be awarded in youth & adult categories. BINGO will be held on Sunday of Spring Fling and will be located under the pavilion. More details about BINGO will be available in the Leisure Times.

Fishing Tournament Winners

Largemouth Bass: 15 inches – Adam Brzezniak

Crappie: 14 inches – Adam Brzezniak

Trout: 12 inches – Greg Huiras

Stringer of 3 panfish: 28.75 inches – Adam Brzezniak



Deer Management AdHoc Committee

Woodhaven Association's Board of Directors has approved the creation of a Deer Management AdHoc Committee. Deadline for applications is April 15.

The mission of Woodhaven's Ad Hoc DMC is to collect, review, and analyze data related to Woodhaven's deer population and to make recommendations to the Board of Directors centered on maintaining a well-balanced and healthy deer herd at Woodhaven.

1. Review data from staff, outside wildlife agencies, and other information collected on deer populations, their impact at Woodhaven, possible risks, and the health of the herd.
2. Using this information, recommend target objectives on what is an appropriate deer population for Woodhaven, based on carrying capacities, suitable habitat, and potential for disease in determining an acceptable number of deer per square mile .
3. Provide information and education materials, through literature and in-person programs that can be provided to Property Owners and interested parties on the Deer Management Program.
4. Develop and recommend programs and concepts intended to bring Woodhaven's deer population within the acceptable limits recommended through this process.

WOODHAVEN ASSOCIATION COMMITTEE MEMBERSHIP APPLICATION

Name _____ Sec/Lot _____
Address _____ Phone _____

Please respond to the following questions:

1. Which Standing Committee do you wish to serve on?

2. Why do you want to serve on this committee?

3. What credentials or area of expertise can you bring to this committee?

4. Would you have a problem attending one meeting a month for committee meetings?

5. How long have you owned your lot at Woodhaven?

6. Do you have any comments to add?

7. Signature _____ Date _____

WOODHAVEN ASSOCIATION STANDING COMMITTEE APPOINTMENTS APPLICANT QUALIFICATIONS REVIEW

REQUEST FOR FILE REVIEW

I, _____, owner of section/lot(s) _____ in Woodhaven Lakes, hereby request an "Applicant Qualifications Review," which includes a file review and a walk-through inspection of my lot.

Signature _____ Date _____

ERBES Realty LLC



Over 30 Years Experience

www.Erbes-Realty.com

1922 Tower Road, Sublette, IL 61367



Lori Erbes,
GRI
Designated Managing
Broker/Owner
815-535-6295
lorierbes@gmail.com



**Marcia
Kosowski,**
Broker
815-582-2381
mkosowski@
erbesrealty.com



Tonja Greenfield,
Broker
815-761-3220
tmg1973@gmail.com



Lisa Maher,
Broker
773-459-5472
lisamaher@
erbesrealty.com



Sec 2, Lot 10 - \$43,000



Sec 3, Lot 90 - \$99,000



Sec 3, Lot 161 - \$67,000



Sec 3, Lot 246 - \$99,500



Sec 4, Lot 120 - \$43,000



Sec 5, Lot 16 - \$38,000



Sec 5, Lot 34 - \$39,000



Sec 5, Lots 54&55 - \$59,000



Sec 5, Lot 110 - \$18,900



Sec 5, Lot 156 - \$42,000



Sec 5, Lot 157 - \$27,000



Sec 5, Lot 178 - \$18,500



Sec 5, Lot 375 - \$14,900



Sec 5, Lot 387 - \$32,500



Sec 5, Lot 405 - \$55,000



Sec 5, Lot 428 - \$35,000



Sec 5, Lot 457 - \$89,900



Sec 9, Lot 221 - \$19,000



Sec 10, Lot 80 - \$15,000



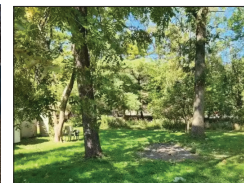
Sec 10, Lot 133 - \$14,000



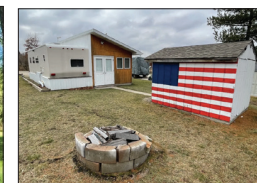
Sec 10, Lot 196 - \$63,000



Sec 10, Lot 312 - \$47,900



Sec 11, Lot 14 - \$15,000



Sec 13, Lot 100 - \$49,900



Sec 14, Lot 29 - \$43,000



Sec 15, Lot 131 - \$55,000



Sec 17, Lot 202 & 203 -
\$35,000



Sec 16, Lot 211 - \$97,000



Sec 17, Lot 96 - \$22,500



Sec 17, Lot 286 - \$39,900



Sec 21, Lot 103 - \$89,500



Sec 21, Lot 149 - \$23,000



Sec 23, Lot 166 - \$74,500



Sec 27, Lot 145 - \$47,500

More Woodhaven Lakes listings on
second Erbes ad

****Property status is as
of March 1, 2023****

Sec 3, Lot 244.....SOLD
Sec 4, Lot 90.....SOLD
Sec 15, Lot 107.....SOLD

**READY TO SELL OR
LOOKING TO BUY?
GIVE ONE OF OUR
AGENTS
A CALL TODAY!!!**

ERBES Realty LLC

1922 Tower Road,
Sublette, IL 61367
Over 30 Years Experience



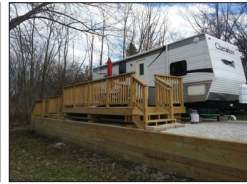
www.Erbes-Realty.com



Sec 28, Lot 135 - \$34,900



Sec 29, Lot 134 - \$48,000



Sec 29, Lot 134 - \$37,500

Residential Listings



REDUCED

17160 Timber Dr, Sterling- \$457,000

This beautiful brick home is located in a subdivision on 1.9 acre in the country. Features an open stairway in the formal entry way. This meticulously maintained 5 bedroom home has a gorgeous kitchen, dining room and living room. Call today for a showing! Realtor Related--(Seller to find a home of their choice)



556 Dry Gulch Rd., Amboy - \$339,500

Cozy well maintained home located on 5.5 acres. A great place for horses. This home features a spacious living room area with fireplace, all appliances stay in this beautiful kitchen, fenced in backyard, and a 3 car attached garage with furnace. LP tank, home generator, and two storage sheds. There are 2 bedrooms and 1 full bath.



146 W. Park, Amboy - \$139,900

4 Beautiful lots on a corner in Amboy. This 1/5 story home has been completely remodeled. Features 4 bedrooms, 1 bath, living room with electric wall fireplace and rope lighting around crown molding, first floor laundry, dream kitchen with garbage disposal, pantry and crown molding on ceiling, open room upstairs for enjoyment.



REDUCED

323 W. Main St., Amboy - \$125,000

This ranch style home is ready for you to move into! Large back yard with concrete patio to entertain and relax by a fire. Features include 3 bedrooms, 1 bath, all appliances stay, central air and heat, family room in the basement and workshop area. Call today for a showing!

704 W. MAIN ST., AMBOY.....CONTINGENT.....\$165,900
903 S. 3RD ST., ASHTON.....PENDING.....\$179,000

Commercial Listings



REDUCED

10 N US Hwy 34, Mendota - \$549,900

Great Business Opportunity! Sip n Snack has been in Business for 50 years! Awesome location with lots of traffic and close to Mendota golf course. So many opportunities with this restaurant/bar. Features include: large parking area, 70 KW generator, over \$100,000 in inventory and equipment. Downstairs seats around 230 and upstairs seats around 70 people.



4 W. Division St., Amboy- \$109,500

Great 1900 sq ft building on approximately 1/2 acre, that can be used for storage, office, or store front. This property is being sold AS IS.

Land to Build On

707 Mississippi Dr., Dixon \$4,900
415 Saint Francis Dr., Dixon \$4,900
00 Liberty/Prospect St., Arlington \$18,000
315 Platte Dr., Dixon \$9,500

Lori Erbes, GRI, Designated Managing Broker/ Realtor®/Owner
815-535-6295 - lorierbes@gmail.com
Marcia Kosowski, Broker
Tonja Greenfield, Broker
Lisa Maher, Broker



WWW.MENDOTAVET.COM

1701 13TH AVE
RT. 251 NORTH
MENDOTA IL, 61342

(815) 539-6601

Your Companion-Centered Family Veterinarian in the Country



Deb Schultz
VP / LOAN OFFICER
units # 719170



Cell 815-440-6708 | Office 815-894-2386 | dschultz@northcentralbank.com
Apply Online 24/7 | Available for all your Lending Needs



www.northcentralbank.com



815-849-5451

Fishing & Hunting | Bait & Tackle | Snacks
Bottled Water & Soda | Night Crawlers | Shrimp
Wax Worms | Trout Worms | Chicken Liver

APRIL HOURS

Saturday 8AM - 4PM
Sunday 9AM - 3PM
Monday-Friday CLOSED
Sunday 4/9 (Easter) CLOSED



Bass Lake Stream Restoration Project

The stream restoration project taking place between sections 8 & 9 is progressing along nicely despite less than desirable conditions. The contractor has finished up on the first section of restored stream and prepping for the next section as of February 24. I have been impressed with their progress given the day-to-day conditions. Weather will continue to have a big impact on the completion of this project.



Figure 1 shows finished stream restoration section below culvert under Woodhaven Drive East looking at the area between sections 8 & 9. This created pool will act to slow water down thus reducing its erosive force.

I realize there are concerns with the number of trees that need to be removed for this restoration work to take place. A lot of the trees were not of the best quality whether due to age and condition or being invasive species. With the size and type of equipment needed to perform this work, there needed to be ample space to store rock as well as for the equipment to navigate the area. We also looked at long term health of the tree as well as it's relation to the stream. Leaving older trees would have an impact on the stream if they would fall into the stream following completion.

Once the stream restoration work is completed and conditions allow, the area will seed with a "native" seed mix suited for the conditions found at this site. The mix will contain grasses, sedges and flowering plants that have deep roots to aid in stabilizing soils and benefiting wildlife species. Over time as the planting matures, flowers and grasses will benefit a variety of wildlife. In addition, the planting will provide an aesthetically pleasing view for those surrounding the area.

Deer Population

Two population surveys were conducted in January and February 2023 by staff traversing the original route (Figure 3) that was set up by the United States Department of Agriculture-Wildlife Services (USDA-WS) in April 2022. The following are the summarized results of all the counts that have been conducted to date.



Figure 2 Groups of 5-10 deer are a common site during the fall, winter, and spring seasons on Woodhaven property.

- April 5, 2022: (conducted by USDA-WS) *ed.*
 - » 187 (with the standard 15% correction factor to account for deer not seen)
 - » 77 deer/square mile on Woodhaven property

- January 18, 2023: (conducted by Woodhaven staff)
 - » 219 deer counted.
 - » 252 (with the 15% correction)
 - » 103 deer/square mile on Woodhaven property
- February 9, 2023: (conducted by Woodhaven staff)
 - » 294 deer counted.
 - » 338 (with the 15% correction)
 - » 139 deer/square mile on Woodhaven property.

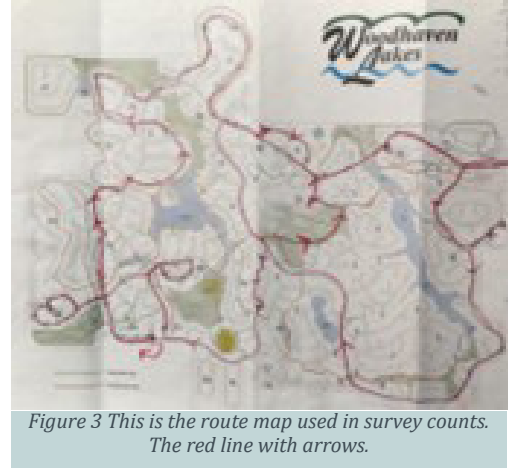


Figure 3 This is the route map used in survey counts. The red line with arrows.

As you see by the numbers above, there has been an increase on each successive count conducted, thus far. Survey counts will inevitably be influenced by factors such as weather, time of day, and location of deer relative to the route. Considering the deer present but not seen during the surveys is the 15% correction factor used (which was used by the USDA-WS in the first survey). For consistency, we are continuing to use this factor. This is a standard correction in wildlife surveys. Counts will continue to be taken periodically to assess the population which will provide a better estimate of the population and trends over time.

A healthy number of deer per square mile recommended by wildlife biologists in most areas is 20-30/square mile. Thus far the counts are exceeding this by a substantial margin. Because of the impacts large numbers of deer have on the health of the population, natural areas, and properties, wildlife resource managers believe that in these situations control should be implemented to reduce the numbers. Harvest of female deer is most important to successful deer management. If females are not removed, a deer population has the potential to double every other year. Imagine where our deer numbers might be in 4 years.

Keeping deer numbers in check is important because too many deer in an area can cause problems. In agricultural areas deer can damage crops and orchards. In urban areas they can quickly wipe out gardens or damage ornamental plants and other landscaping. And more deer on the landscape means a greater chance of deer-vehicle accidents.

In natural areas, deer can change the structure of the local plant community. When deer become overabundant, they over browse, this reduces the natural regeneration of trees and allows more sunlight to reach the forest floor, thus changing the plant species composition. This can allow invasive species to get a foothold leading to further degradation of natural areas.

Research has shown that deer can cause a reduced diversity of plants, virtually eliminate forest understory, and reduce the reproductive potential of rare plants. This alteration of plant communities also encourages the growth of exotic species such as garlic mustard that outcompete other native plants such as trilliums, orchids, and ginseng.

These negative impacts on the vegetation eventually impact the deer because there is no longer sufficient vegetation to provide them with enough food. The negative impacts on plants also negatively impact other species of wildlife that depend on them for food, cover, and nesting sites.

Another consequence of overabundant deer is possible disease transmission. Some diseases are spread from deer to deer by direct contact or at contaminated feeding sites. With increased numbers of deer on the landscape, there becomes a greater risk of disease transmission as deer are feeding close proximity. Chronic Wasting Disease (CWD) is a disease which continues to spread across the state. Please do not put out any type of feed to attract deer.

Goose Management

With the return of spring, we see a return of geese to the campground. The goose population has increased over the past few years with numbers estimated at 100-150. As you read this article, nest and egg control activities will be in progress. Geese begin nesting in the latter part of March in this area. A few nests have already been identified with additional pairs of geese having staked out their nesting territory in other areas of property.

Each year since 2006, we are granted a permit from the Illinois Department of Natural Resources to conduct the nest and egg control activities on up to 60 nests. The permit is valid for 90 days beginning in March. Last season 17 nests were identified and treated between March and May.

The procedure for the nest and egg control is as follows:

Once a nest is located, the eggs are oiled and placed back in the nest so that the female continues to incubate. The permit specifies that only corn oil is to be used for oiling the eggs, so no harm is done to the adult geese. The number of days that the eggs have been incubated to the point when they are oiled determines the length of time that the eggs must remain in the nest until the nest and eggs are picked up for disposal. The incubation period for geese is 29 days. This procedure prevents the geese from setting up a new nest at another location as the female is past the egg laying stage. If a nest is destroyed early in the incubation period such as when a predator raids the nest or the eggs are picked up too early, the pair of geese will re-nest at another location. This makes it more difficult to find the nesting pair. The waiting period to pick up eggs and nest can be from 1-3 weeks from initial treatment. Please report nests even if they might be already treated.

You can report any nest you find on or near your property to the Resource Department at 815-849-5209 Extension 305. It is difficult to find all the nesting pairs as they are adept at finding the most secluded spots on property to nest. Geese have adapted the prac-

tice of nesting on top of structures which makes them more difficult to find. If a nesting pair of geese are particularly troublesome or there is concern for one's safety, please contact us so that we can remove the nest immediately.

Anglers are required to always have their fishing license in possession while fishing. Fishing licenses expire on March 31 each season.

Annual Fishing License Renewal

Remember to renew your Illinois fishing license prior to embarking on that first trip out to the lake, pond, or river beginning April 1, 2023. Your fishing license purchased in 2022 expires on March 31, 2023. An Illinois fishing license is required by all owners and guests who fish Woodhaven Lakes. Owners, please inform your guests of this State law and Woodhaven rule, Article 5, section 1C. Those anglers that plan to catch and keep trout will also be required to renew their Inland Trout Stamp beginning April 1, 2023. Trout were stocked last fall in Pine, Hidden, and Bluegill Lakes. There will be trout remaining to be caught plus your Inland Trout Stamp will be valid for the fall 2023 stocking of trout.

Why is a license required at Woodhaven when this is a private campground? Though Woodhaven is a private campground, it is a lake association. In Illinois, lake associations are not exempt from the need to have a current fishing license in possession while fishing the lakes on property. The exception to this is the period set aside by the State as FREE FISHING DAYS to be held June 16 - 19, 2023. During "Free Fishing Days" only, anglers will not be required to have any type of sport fishing license but all rules and catch limits must be followed.

Licenses can be purchased online at the Illinois Department of Natural Resources website or at any license dealer in the State. Woodhaven's Bait Shop will open on April 1 this season where licenses, bait and tackle are sold for your convenience. The bait machine, outside the shop, will continue to be stocked with bait and tackle items for your convenience prior to the opening of the shop.



Figure 4 Can you see the goose nesting on top of this roof? This shows how difficult it is to locate nests out on property.

NOTICE:

There was a number of watercrafts picked up in December 2022 from the storage areas around the lakes. Anyone that may have left a watercraft at a storage area, please contact the Resource Department at 815-849-5209 ext. 305 to claim and arrange pickup.



T & R SALES

Park Model Homes & Destination Trailers

GRAND OPENING CELEBRATION SATURDAY MAY 6TH, 10 A.M.-4P.M.

Join us for a Ribbon Cutting Ceremony! Food provided: Burgers, Hot Dogs, Chips, and Drinks.

Enter a drawing to win a free Bintelli E-Bike!

Check out all our Park Models, Destination Trailers, LSV, Scooters, and E-Bikes!

Free Delivery of all LSV Sold! (Within the Sublette region)

ABOUT US AT T & R SALES: LIFE IS TOO SHORT NOT TO ENJOY!

T&R Sales was established in 2022 from the passion that Tina and Rusty (T&R) share for having fun and living life to the fullest. Growing up, both Tina and Rusty came from families that didn't have a lot, but very much valued the time shared with family and friends. As a child, Rusty spent his summers and weekends at Woodhaven Lakes with his Grandparents, who were longtime residents. In fact, their trailer is still in the same lot and just a block away from our site. His memories of the time spent at Woodhaven was something he cherished.

Rusty has been an entrepreneur his whole life, opening his first business when he was just 14 years old! At the age of 25 Rusty opened his second business, a janitorial supply, distribution company. This year they celebrated 27 years in business. Last year when Rusty saw property for sale close to the campground, he came up with a plan. Rusty wanted he and Tina to be able to bring their love of camping to others who shared this same interest; T&R Sales came to life!

AT T&R SALES WE SPECIALIZE IN PARK MODEL HOMES, DESTINATION TRAILERS, LSV'S (LOW SPEED VEHICLES), SCOOTERS AND EBIKES. WE ARE DOWN TO EARTH PEOPLE WHO WANT TO LIVE OUR BEST LIFE AND WANT YOU TO DO THE SAME!

FEATURING PARK MODELS FROM ELEVATION, CANTERBURY, AND FAIRMONT HOMES

ELEVATION:

Elevation Park Model rivals Woodland Park and Kropf with fresh floor plans and residential custom cabinetry and Argon windows standard on every model. With over 25 combined years in the industry the owners Brent Kattau and Joel Lederman are committed to providing you the best quality product on the market. Constructed in a modern production facility in Elkhart, Indiana just a mere 3 hours from Sublette IL! We are glad to be working with them for many years to come! Their park models are one of a kind!



CANTERBURY RV:

Also constructed near the "Well Crafted, RV Capital" in Elkhart Indiana comes to us Canterbury RV. They will be sending up many of their popular models with both series the Parkvue and the Bayview! Both models offer many floor plans and we just can't wait to see what they are sending our way just for you! Canterbury has been around for more than 30 years building high-quality park models just wait for you!



FAIRMONT HOMES:

Coming from deep in the Amish Country of Nappanee, Indiana will be models from Fairmont Homes! We will be receiving in several Cavco and Country Manor both models offering wonderful floorplans. Fairmont is the only park model manufacturer that uses drywall on all of their units making them very solid and quiet! Fairmont Homes fashioned a contemporary look and a high quality standard for their homes without compromising on affordability, and a successful company was launched.



WE WILL ALSO HAVE DESTINATION TRAILERS FROM FOREST RIVER!

Their Destination trailers are perfect for anyone looking to make the most of a permanent site. With solid surface counter tops, residential oven and refrigerator, full walk-in shower, and so much more.



Bintelli LSV are in stock and ready to roll with 12 colors to choose from. If you're in the market for an LSV come see why Bintelli is the #1 rated LSV on the market! This is a large investment in fun so why wouldn't you invest in quality?! Bintelli is a Street legal cart that is built on an all aluminum frame (not a cheaper hollow steel frame that will rust). Just look under the competitors carts (star, evolution and icon) and you will see the difference in quality construction and components. Bintelli has been in business for 26 years and operates the largest family owned LSV assembly plant in the U.S. Come and take a test drive and see for yourself!



Located At 601 N Inlet Road, Sublette IL 61367 (Kelly Hicks Former Location). | WWW.TR-SALES.COM | Sales@Tr-Sales.com | 815-849-9089

WOODY'S

PIZZA PLUS



Pizza - Chicken - Fries & More

**WELCOME
BACK
CAMPERS!**

**SEE YOU
SOON!**

WOODY'S GENERAL STORE & RESTAURANT

BAKERY & DELI - FROZEN FOODS - LOTTERY
CAMPING & PICNIC SUPPLIES - CLOTHING & HATS

BEER • WINE • LIQUOR

815-849-5189

CATERING:
PICK UP OR DELIVERY!
815-849-5189

CAMPSTOVE RESTAURANT APRIL HOURS:

SATURDAY (STARTING 4/22) 8 AM-11 AM
SUNDAY 8 AM-11 AM

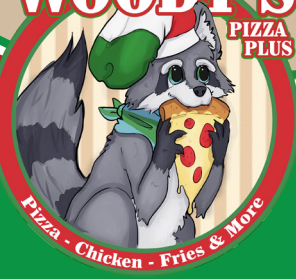
COME CHECK OUT OUR NEWLY
RENOVATED, RESTAURANT AREA!

GENERAL STORE APRIL HOURS:

FRIDAY (STARTING 4/7) 3 PM-8 PM
SATURDAY 8 AM-4 PM
SUNDAY 8 AM-1 PM
MONDAY-THURSDAY CLOSED

WOODY'S

PIZZA PLUS



Pizza - Chicken - Fries & More

PIZZA PLUS:
815-849-5197

PIZZA PLUS APRIL HOURS:

FRIDAY (STARTING 4/21) 4:30 AM-7 PM
SATURDAY 12 PM-7 PM
SUNDAY-THURSDAY CLOSED



**IF YOU NEED THE SPACE,
WE'VE GOT THE PLACE!**

Located at the intersection of Hwy 52 and
Dry Gulch Rd. Just outside of Amboy
Visit TripleZStorage.com or call 815-973-7337

Newly built state-of-the-art storage facility featuring the following:

- Full ventilation for the roof structure
- Full Condensation Control
- Moisture barrier under the concrete
- Door curbs to stop rain from blowing in
- Natural lighting inside the building
- Solar security lighting
- Multiple sizes available

Perfect place to store your golf cart, motorcycle, or any other personal items you might have.

Robeson RV Repair

General Contractor

Trailer Relocation/Releveling, Sewer Extensions,
Electrical, Plumbing, General Maintenance, Winter Watch,
Power Washing, Rubber Roof Repairs & Replacements, Skirting

WINTERIZING AVAILABLE!!!

815-830-1082



JORI MCRAE
DESIGNATED
MANAGING BROKER
815-973-1197



Living in & Serving your community for 20+ years

www.rivercountryproperties.net | jori@rivercountryproperties.net



24.85 Acres Ag, and 0.80 Zoned res, one cabin on total 25.65 Acres. Pin's 18-08-09-100-019 & 18-08-09-200-014, with small cabin/shed, one bedroom, etc. Well & Septic, Camper and riding lawnmower negotiable with offer. Walk to strip mall and Walmart.



Beautiful 9.12 Acre property, build a dream home. \$89,000
Sec 30 Plum Hollow Ln, Dixon, IL 61021
Directions: Located just off Route 26 Galena, turn onto Plum Hollow Court right before Plum Hollow Bowling Alley, (part of property), also go left on Gearhart Ln, (also part of property).



2023 Catch Limits

Largemouth Bass	14" Minimum Length Limit *recommended voluntary catch & release 1 Fish Daily Limit per Lake
Walleye	2 Fish Daily Limit 16" Minimum Length Limit
Channel Catfish	4 per Day
Crappie	15 per Day
Trout	3 per Day
Bluegill & Redear Sunfish	No Limits
Bullhead	No Limits
Common Carp	No Limits (Do not release to water)
Grass Carp	RETURN TO LAKE!

***Notes:**

- A minimum length limit indicates that fish taken and not returned to the lake are required to be equal to or larger than the stated length. All fish less than the stated length shall be returned to the water being fished.
- A daily limit will pertain to the lake being fished. Anglers will not be allowed to have in possession more than the state limit on any given lake.

NO MINNOWS ALLOWED AS BAIT

With spring just around the corner, you are likely planning your return to Woodhaven and the many projects you want to accomplish in the coming seasons. The following are some questions and answers we hope will be helpful with your future construction plans.

When do I need a permit? Any additions, changes to, or relocation of existing improvements requires a permit. When in doubt, contact ESAC. Our office can assist you with the correct permit for your project. One of ESAC's responsibilities is to be certain improvements to your lot comply with the Rules and Regulations. If you are relocating a structure or "refreshing" or adding gravel to an existing patio, driveway or walkway, ESAC needs to be certain the setback requirements are still met and the gravel area didn't increase. This latter problem can occur for many reasons, including the fact that gravel "travels" if not contained by timbers. What you intend as a top coat of gravel may result in an area which exceeds the permitted square footage or setback requirements. We definitely don't want you to have to remove excess gravel if it can be avoided.

What if I have a question about the Rules and Regulations? The ESAC staff is always willing to answer your questions and assist you with your construction plans. Friends, neighbors and others at Woodhaven might be happy to answer your questions, but even with the best of intentions, they might not be aware of the current Rules and Regulations. Talking to ESAC first is always a good idea.

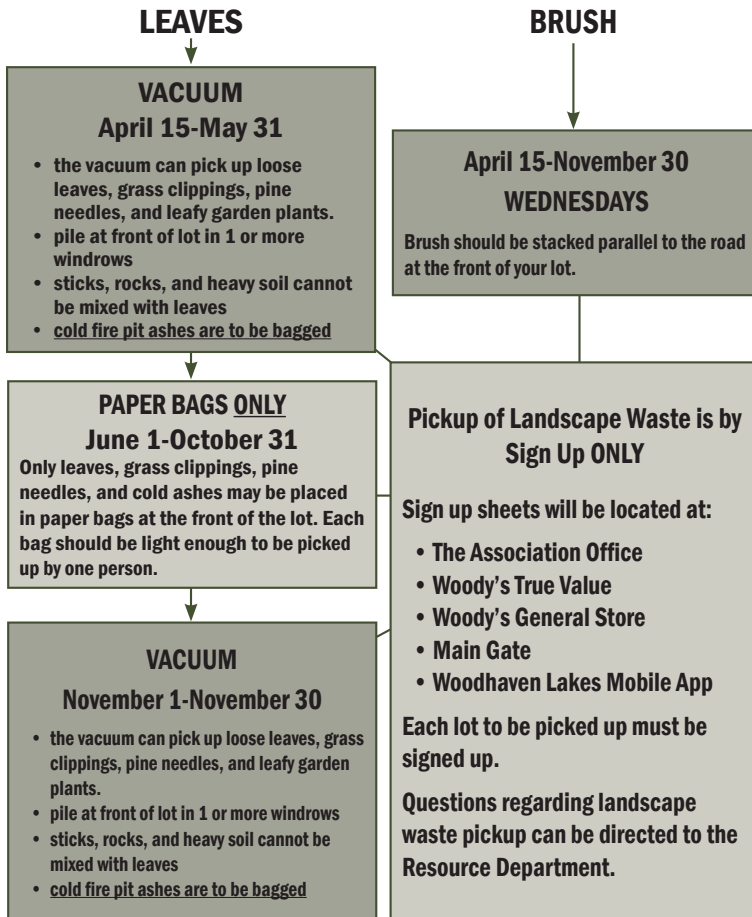
What if I want to hire someone to do the work? ESAC maintains a list of contractors who have registered to perform work at Woodhaven. Registered contractors have paid an annual fee and provided proof of liability insurance and Worker's Compensation insurance, if applicable. If you call or visit ESAC, we would be happy to provide you with a copy of the list. The list can also be obtained in the lobby of the Association office, on the Woodhaven website and on Woodhaven's app. Please be advised that the Association cannot guarantee nor be held responsible for the work done or agreements made between you and a contractor. It is recommended you request a detailed written contract with the contractor before any work is done or payment is made. It is always a good idea to request from the prospective contractor, other Property Owners they have conducted business with for a recommendation. The Association in no way recommends one contractor over another.

When is a lot pinning performed? A pinning inspection to locate your property boundary markers is required when a First Class Permit is requested and there has been no pinning or survey within the prior 12 months. You may also request an inspection in conjunction with planned construction or changes to a lot, or simply because you wish to identify your property lines. Requesting a pinning during the construction planning stage is an excellent idea to prevent possible issues delaying your construction.

While one of ESAC's responsibilities is to ensure compliance with the Rules and Regulations as they relate to lot development, we strongly encourage you to look to ESAC for assistance with your plans, the construction process and any questions you might have.

We look forward to a new year of assisting you with your plans for enhancing your property.

LANDSCAPE WASTE LOT-to-LOT PICKUP PROCEDURE



Refrain from placing any landscape waste in or alongside dumpsters that are located throughout property. A \$100 fine will be imposed for those engaging in this practice.

As the days start getting longer, flowers start to pop through the ground, and songbirds arrive, we at **Woodhaven Lakes Realty** are preparing to spring into another great season of helping buyers, sellers and all who love Woodhaven. The cold winter months gave us time to relax and rejuvenate from our fabulous 2022 season, and now we are ready for an even better 2023. We are making plans for the listings to come rolling in and the phones to ring more steadily.

If you haven't been able to use your property in recent seasons the way you had previously, it may be time to think about selling. The brokers at **Woodhaven Lakes Realty** are always ready to help you with that undertaking. They can assist you through the process to make it as smooth and stress free as possible. All our **Woodhaven Lakes Realty** brokers are very knowledgeable of Woodhaven properties and our current market. They can offer you a very well-informed opinion of value, along with other great suggestions and plans to secure a buyer as quickly as possible.

If you are looking to purchase at Woodhaven, your first step should be calling **Woodhaven Lakes Realty** to connect with one of our spectacular Brokers. You will be able to discuss with them all you want and need in your perfect getaway and in turn they will be able to answer any of your questions and help you in your search. Even if your perfect set-up hasn't made it to the available properties just yet, they can notify you as soon as something that checks all your boxes hits the market. **Woodhaven Lakes Realty** brokers also have the resources to inquire about a specific property you may see prior to it being listed.

So as Spring blooms be sure to start the season out on the right foot by calling **Woodhaven Lakes Realty**, we can provide you with a smooth, timely and enjoyable transaction to accentuate your great Woodhaven experience.

Woodhaven Lakes Realty is open Monday through Saturday 8:30 - 4:30 for your convenience. Call today (815)849-5476.



815-849-5476
woodhavenlakes.com/wlri
 Monday-Saturday | 8:30am -4:30pm

please call for an appointment

Find us on realtor.com | trulia.com | zillow.com

MAKE YOUR TRAILER A RESORT

WELCOME BACK

SLEEPERS - EZ LOUNGERS - FUTONS - MATTRESSES
 INCLUDING SHORT QUEENS AND OTHER SIZES.

DELIVERY AND PLACEMENT IN YOUR TRAILER

CASH OR CHECK - PAID IN FULL, NO TAX ADDED



FINANCING AVAILABLE

1901 S. State, Hwy 251 | Mendota, IL
 815-539-6263

meyersfurnitureandbedding.com
meyersfurniture63@gmail.com



PRIME SOLUTIONS

KEN RICKETS
 815-690-4025
KEN@PRIMESOLINC.COM
PRIMESOLINC.COM



- ROOFING
- CARPENTRY
- RETAINING WALLS, SEAWALLS, PATIOS, & WALKWAYS
- GRAVEL DRIVES & PADS
- PAINTING & STAINING
- POWER WASHING
- TRAILER SKIRTING
- GLASS REPLACEMENT
- GENERAL MAINTENANCE

CUSTOM BUILT DECKS & SCREEN ROOMS

ROOM ADDITIONS
 Durabilt
 - 3-Season & 4-Season Rooms
 - Covered Porches

GOT PROJECTS BACK HOME? WE CAN HELP! CALL US FOR A FREE ESTIMATE TODAY!

FREE ESTIMATES | FULLY INSURED



THE NATURALIST CORNER

alyssa rod, nature center coordinator

What signs of spring did you find in March? First robin of the year? First cardinal singing their spring song? Mammals like skunks, groundhogs, or opossum wandering about after their winter slumber? Maybe a few warmer days with signs of ladybugs, box elder bugs, or gnats flying around? Or perhaps flocks of geese and ducks flying north for the summer season?

During April, we'll see more signs of spring coming our way as spring ephemerals pop up out of the ground. Spring ephemerals are the earliest of our spring wildflowers that start blooming in woodlands during April (and sometimes late March). These flowers appear before the leaves emerge on trees so they can receive plenty of sunlight. They tend to be smaller plants with smaller flowers that are pollinated by the wind or early pollinators. Spring ephemerals are important for those pollinators offering the first source of nectar and pollen for bumblebees, mining bees, various flies, and gnats. They are a beautiful gift of nature after the long, grey, cold winter.

A few of the early spring ephemerals include hepatica, a 4-6" tall plant with three-lobed leaves and small 5-9 petaled flowers in lavender, white, pale blue, or pink. Bloodroot is a 5-10" plant that emerges as soon as the soil thaws. The name comes from the red-orange liquid found in its stems and roots. It has one, large white flower with 8-10 petals and a single, large, extremely lobed leaf that wraps around the flower and flower stem. Large-flowered bellwort is a taller plant reaching 10-20" and has a drooping, yellow, long-petaled, bell-shaped flower. There



are so many more plants that can be found in the woods and along wetland edges during spring that get you excited for the rest of the year in nature! Take some time and walk a local nature area trail to find a few of these flowers on your own. Just remember to leave the flowers where they are for others to find. Stop by the Nature Center during Spring Fling to find out more about nature's beautiful artwork in flowers!

Spring Fling at the Nature Center:

Join us at the Nature Center to take a closer look at springtime nature! Need help identifying spring woodland wildflowers? Check out our Spring Wildflower display as many of these flowers will be blooming around this time in our region. Interested in adding a tree to your lot? Pick one up at the Tree Give-away.

Tree Give-Away

Saturday, April 29 | 1:00 p.m. till gone

Nature Center Screen Porch

Help the Earth and plant a tree! Trees help place oxygen into the air and remove carbon dioxide. Stop by the Nature Center Screen Porch for our Annual Tree Give-Away where we will be handing out bare root trees to reforest your Woodhaven lot. (If trees are delayed due to weather conditions in growing zone, we will announce when trees will be available for pickup at a later date.)

Free Craft: Springtime Flowers

Saturday and Sunday, April 29 and 30

Open Hours at the Nature Center

Early spring is a great season to spend some time in the woods looking for spring woodland flowers! Pop your way over to the Nature Center to design your special spring flowers to decorate your home for the season. While supplies last.

Nature Nuggets: Let's take a closer look at local nature!

This month we'll focus on one of our unique looking spring ephemerals: Jack-in-the-Pulpit (*Arisaema triphyllum*). This plant can be found in mid-late April and into May in woodland areas throughout all of Illinois. Jack-in-the-Pulpit (JIIP) can be found in the eastern half of the United States as far west as North Dakota south to Texas. It requires rich, moist, deciduous woods and floodplains.

JIIP start with the flowers popping up first in spring. The uniquely shaped flower is 3-4 inches tall and about 2 inches across. There are two parts to the flower: a 2-3" club-shaped spadix called the "Jack" that sits in a hooded tubular base spathe called the "pulpit". The "flower" is green and the inside of the hooded spathe has reddish/purplish stripes. After the flower is open, the leaves emerge from the ground in 1 or 2 sets of compound leaves. Each leaf has 3 leaflets and tower over the flower to hide it from view. In late summer, the fruit cluster turns from green to bright red. During this time the red berries are easily found as the flowers have started to die back.

Pollination is interesting, as male flowers tend to be smaller with a small hole at the bottom of the spathe which allows pollinators to escape with their pollen more easily. The female plants lack the hole, so pollinators are more likely to become trapped, ensuring successful pollination. JIIP are pollinated by fungus gnats which are attracted into the "pulpit" by a slight fungal odor.

JIIP are important for wildlife as birds will eat the berries, including Wood Thrush and Wild Turkey. These berries, and the plant itself, are not safe for mammals (including humans) to eat and some parts of the plant can be unsafe to touch, causing irritation to the skin.

Fun fact: Jack-in-the-Pulpit receives its name from the structure of its unique flower that looks like Jack "standing" in the pulpit-like structure! Other names include Indian turnip.

NATURE CENTER HOURS APRIL:

Saturday, April 29: 10:00 a.m. – 4:00 p.m.

Sunday, April 30: 10:00 a.m. – 3:00 p.m.

WOODY *True Value* HARDWARE

Advertised Bargains and Hours of Operation are for April Only

April
Mon.-Sat: 8 a.m.-4 p.m.
Sunday: 9 a.m.-3 p.m.

Glass Cutting | Propane
 Fax | Copier | Shipping
 Keys Cut
 Gasoline | Gift Certificates

Rentals:
 Floor Care | Weed Eaters
 Appliance Dollies | Spreaders
 Leaf Blowers
 Pressure Washer

BARGAINS OF THE MONTH®



17.99
Green Thumb®
 5,000 sq. ft. Weed & Feed L 225 487 1
 Not available in all areas.



8.99
YOUR CHOICE
Green Thumb®
 6 in. Shrub Rake or 24 in. Lawn & Leaf Rake T 531 517; 560 216



19.99
Woodland Tools
 16 in. Portable Mini Lopper T 109 700 B12



69.99
YOUR CHOICE
GCI Outdoor™
 BLU Freestyle Rocker™ or GRY Comfort Pro Rocker™ T 108 120, 122



14.99
YOUR CHOICE
Green Thumb®
 Adjustable Nozzle or 7-Pattern Nozzle L 110 380, 381 B10



18.99
YOUR CHOICE
GE®
 2 pk. Par38 Outdoor LED Floodlights 15W or 16W. E 234 696, 707 B4



15.99 SALE PRICE
-6.00 MAIL-IN REBATE*
9.99 FINAL PRICE
Roundup®
 1 gal. Weed & Grass Killer L 162 323 B4 *Limit 2 per offer.



49.99
Teknor Apex®
 100 ft. Zero-G Garden Hose L 211 575 4

Consumer responsible for taxes. While supplies last.

TV-AD-3841293469 TZ

WOODY TrueValue Hardware
 815-849-5107

Just off Woodhaven Drive in Section 9
 Or off property at 1802 Sublette Rd, Sublette



Sale ends 4/30/23

©2023 True Value Company LLC

Find the right products for your project at your local True Value®.

We have a full line of treated and non-treated lumber for interior or exterior projects!

Woodhaven Association
509 LaMoille Road, Box 110
Sublette, Illinois 61367-0110

PRST. STD
 US POSTAGE
 PAID
 AMG, INC



815-849-5476

Please call for an appointment

Monday-Friday 8:30 a.m.-4:30 p.m. | Saturday : 10 a.m.-2 p.m.

View available properties: woodhavenassociation.com | realtor.com | zillow.com | trulia.com

NEW

2/76	\$110,00
3/104	\$11,500
5/28	\$66,000
6/40	\$15,000
11/7	\$42,500
11/92	\$51,900
11/176	\$19,000
15/141	\$25,900
21/110	\$62,900
25/132	\$15,000
29/169	\$16,500
29/210	\$50,000

CLOSED

11/308 20/4
 14/5 & 6

1/29	\$29,000	11/113	\$47,500
1/139	\$52,000	11/196-7	\$29,000
2/123-4	\$69,900	11/264	\$35,000
2/156	\$23,499	12/16	\$42,000
4/175	\$20,000	13/57	\$16,500
5/125	\$55,000	13/97	\$13,500
5/170-1	\$162,000	14/27	\$16,500
5/451	\$35,000	15/60	\$49,900
5/458	\$80,000	15/79	\$18,900
5/490	\$29,900	15/181	\$51,900
6/20	\$44,900	16/204	\$79,000
6/185	\$49,000	17/103	\$30,500
7/57-8	\$78,000	20/10	\$26,500
9/43	\$75,000	20/37	\$26,500
9/129	\$19,900	21/268	\$36,500
9/178	\$18,500	22/87	\$18,500
10/82	\$12,000	24/114	\$19,900
10/90	\$46,000	27/107	\$37,900
10/97-8	\$55,900	29/5	\$28,000
10/114-5	\$45,000		

Reduced | *Contingent/Pending*

Information Last Updated 2/9/23



Mary Lovgren
 Realtor® Broker
 815-994-1449
marylovgren@gmail.com



Sal Bayron
 Realtor® Broker
 312-952-3409
SBayron@sbcglobal.net
 Se Habla Español



Justin Wiley
 Realtor® Broker
 815-849-5390
JWiley@woodhavenassociation.com

Bonita Willis | ePRO, C2EX, Designated Managing Broker

