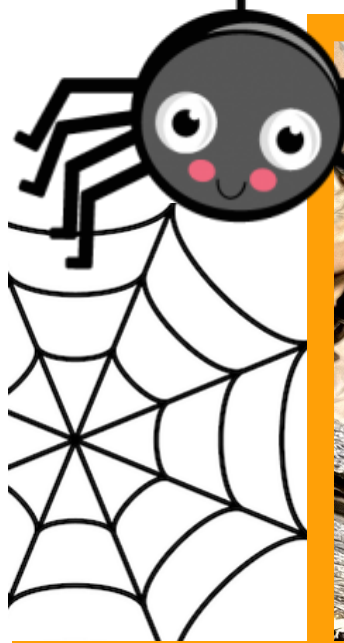
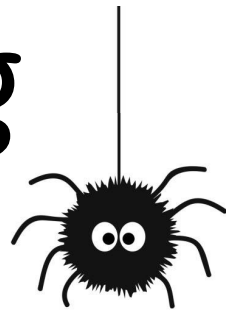


# Make a Walking Spider Puppet



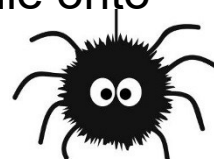
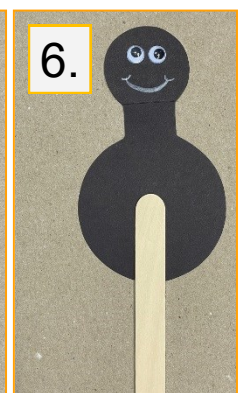
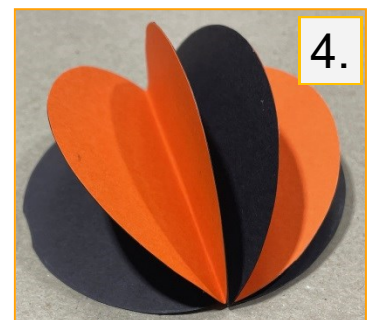
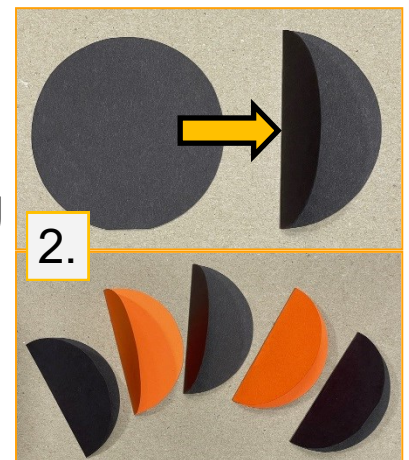
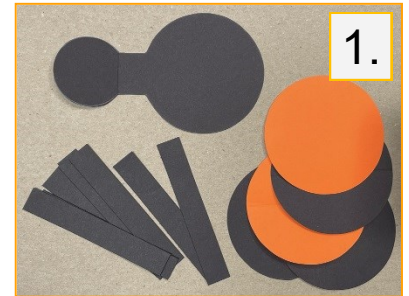


# Walking Spider Puppet Directions

**Materials:** black/orange construction paper templates, wiggle eyes, jumbo craft stick, white color pencil, scissors, glue stick, & glue

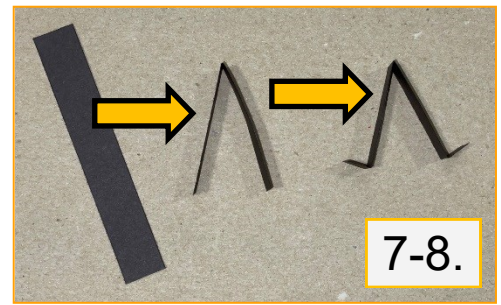
## Directions:

1. There are 1 black body, 3 black circles and 2 orange circles to cut out. The non-marked black paper is for legs in a later step. Cut out body & circles.
2. Fold each of the five circle shapes in half. Mix colors up like the picture and leave folded.
3. Time to glue. Start with 1 black circle, applying stick glue on outer side. Attach an orange folded circle on top, keeping both circle shapes aligned on folded edges. Press down.
4. Continue gluing circle shapes one on top of the other (total of 5), making sure they are aligned along the folded edges. (Do **NOT** completely close the circle up!) The final shape should look like an open book or fan.
5. Using body shape, glue eyes onto the face (smaller circle side) & draw a smile.
6. Glue the jumbo craft stick handle onto the tummy (larger circle side).



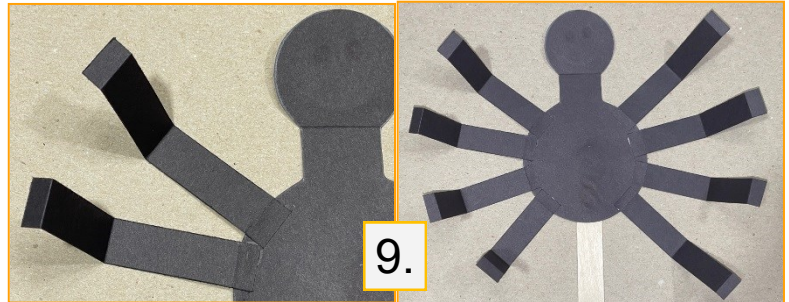


7. Take the square black paper pieces we sat aside earlier to make the legs. Cut into 8 similar sized strips. (Some packs have two smaller squares and some have one larger square.)

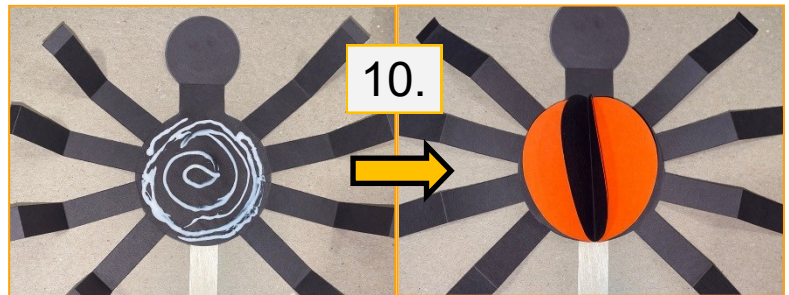


8. After cutting, fold the legs in half to make an up-side-down V-shape. Fold each end outwards to make a little foot.

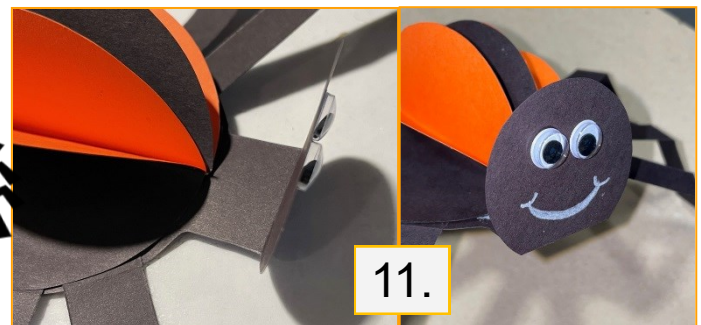
9. Turn the face/body over and glue 4 legs onto each side of the back of the tummy using the little feet you folded in step 8.



10. Time to glue the spiders back on. Use glue on the body/tummy (the side without the craft stick). Place the black/orange body on top and press down.

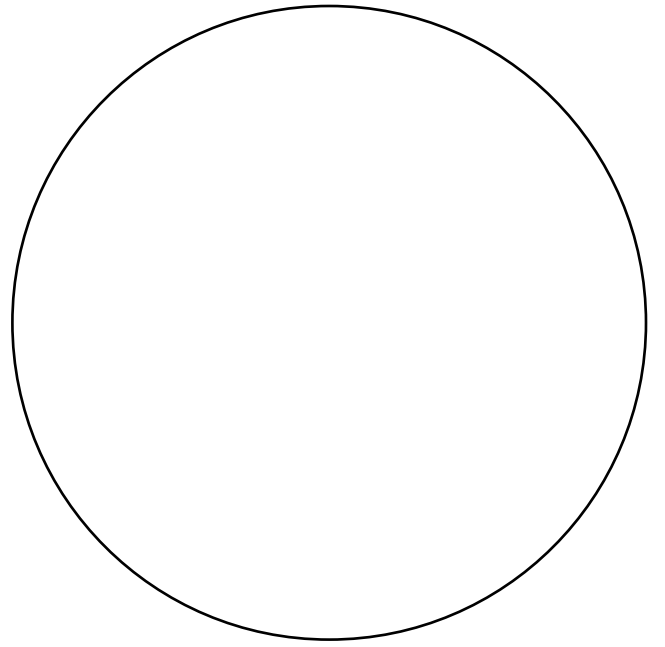
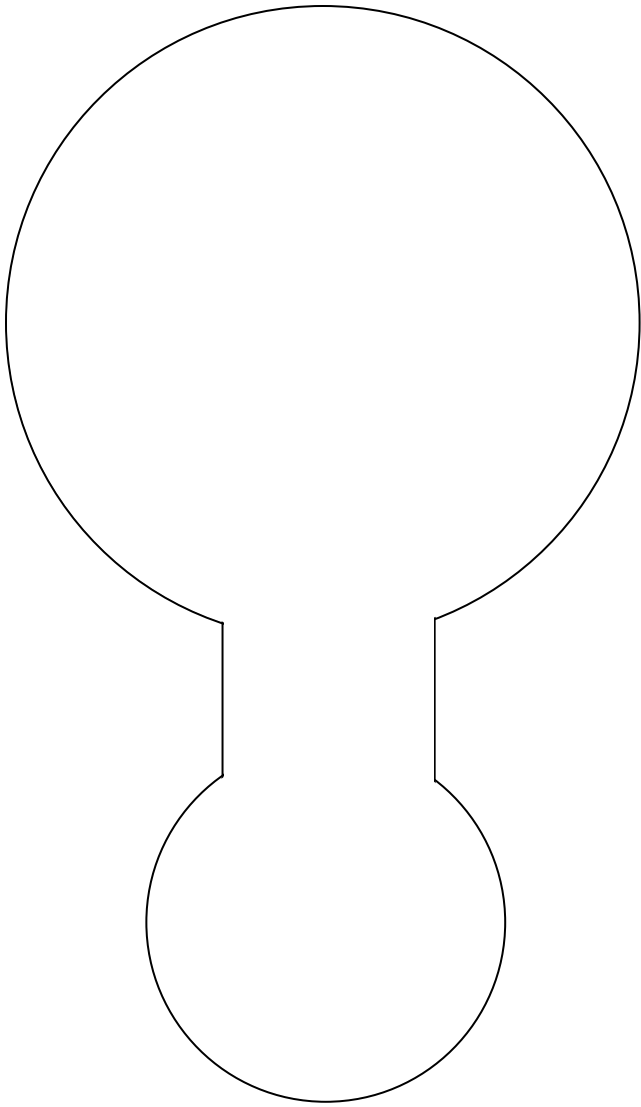


11. Fold the spider's head upwards.



12. Hold the craft stick handle and twist your wrist from side to side to make your spider puppet walk, crawl, and more!





--	--	--	--	--	--	--	--