

# Make A Torn Paper Fall Tree





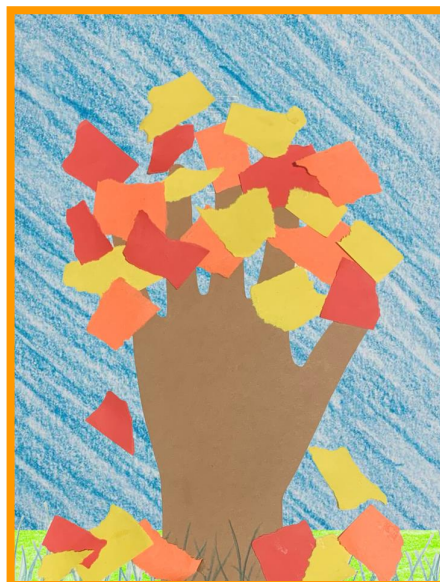
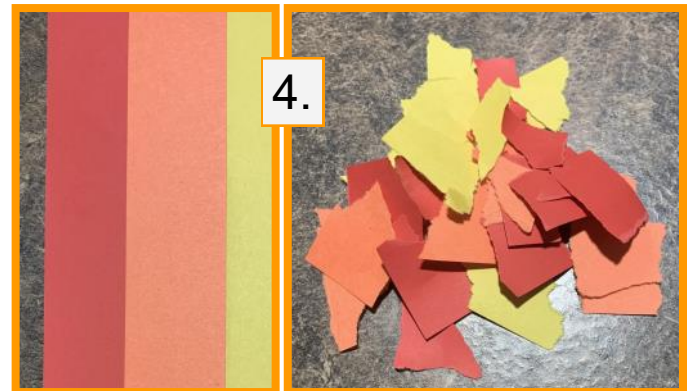
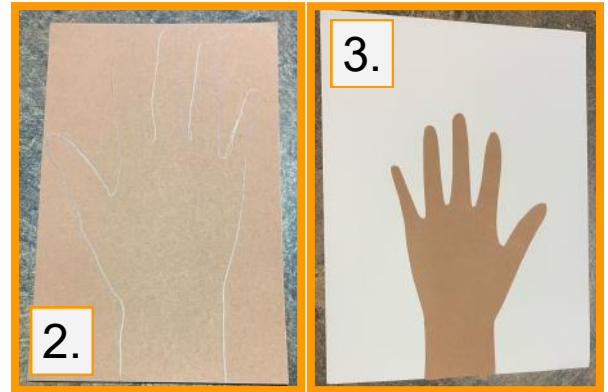


# Torn Paper Fall Tree Directions

**Materials:** construction paper, color pencils, glue, & scissors

## Directions:

1. Color your white paper with a background color if you would like to.
2. Trace your hand and part of arm onto the brown construction paper to create the trunk of your tree.
3. Cut out the tree trunk and branches and then glue onto your background page.
4. Take the red, orange, and yellow construction paper and rip into smaller pieces of paper to create the fall leaves for your tree.
5. Glue the “leaves” onto tree or falling to the ground.
6. Finish adding more coloring to your picture like grass or butterflies.



7. Take this bright fall tree home to hang up for the autumn season!





