

Make a Paper Tube Campfire

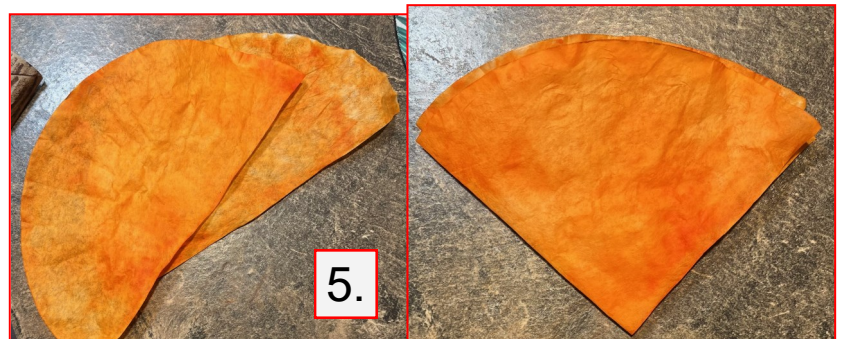
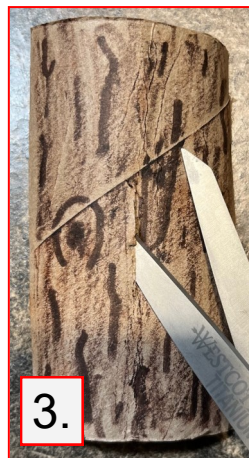
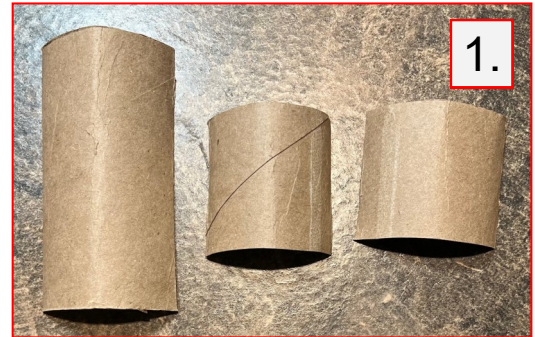


Paper Tube Campfire Directions

Materials: 1 TP tube, 1 coffee filter, 1 popsicle stick, 1 cotton ball, 1/2 sheet black construction paper, scissors, tacky glue, brown & orange marker

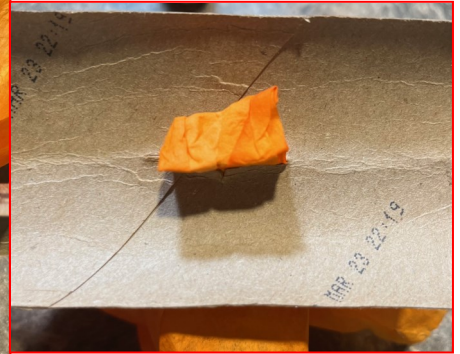
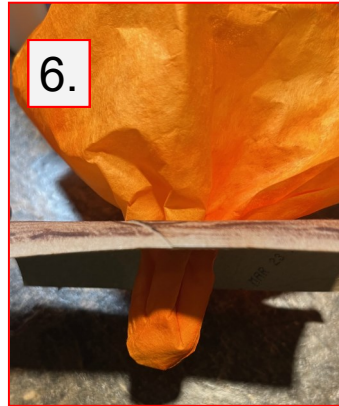
Directions:

1. Begin by cutting the TP tube in half. Cut one half in half again, hamburger style.
2. Color a wood grain design onto the TP tubes.
3. Cut a slit, about an inch long, in the middle of the longest TP tube. Cut a point onto the smaller TP tube pieces.
4. Set the TP tube pieces aside and color the coffee filter, front and back.
5. Cut the coffee filter in half. Stack the halves on top of each other and fold over top of each other, making a triangle shape.



PLEASE LEAVE DIRECTIONS ON TABLE ~ THANKS, WH NATURE CENTER

6. Feed the point of the coffee filter triangle into the slit on the larger TP tube half. Fold it over underneath.



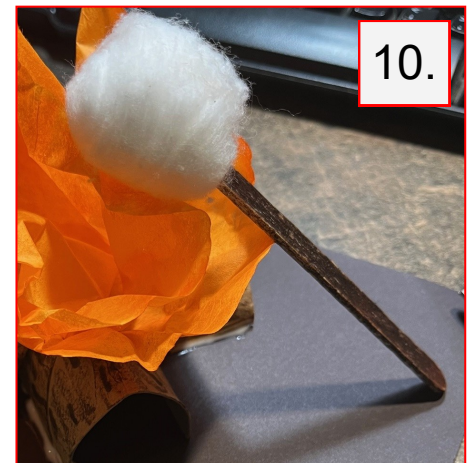
7. Glue the larger TP tube half with the coffee filter to the center of the black construction paper.

8. On either side glue the smaller TP tube halves with points onto the larger TP tube.

9. Color the popsicle stick brown and glue the cotton ball to the end.

10. Put a small dot of glue on the side of the popsicle stick to stick it to the coffee filter. This will help it stand up better.

11. Your paper tube campfire is complete! Enjoy your s'more!



PLEASE LEAVE DIRECTIONS ON TABLE ~ THANKS, WH NATURE CENTER