

Make A Flowering Tree Circle

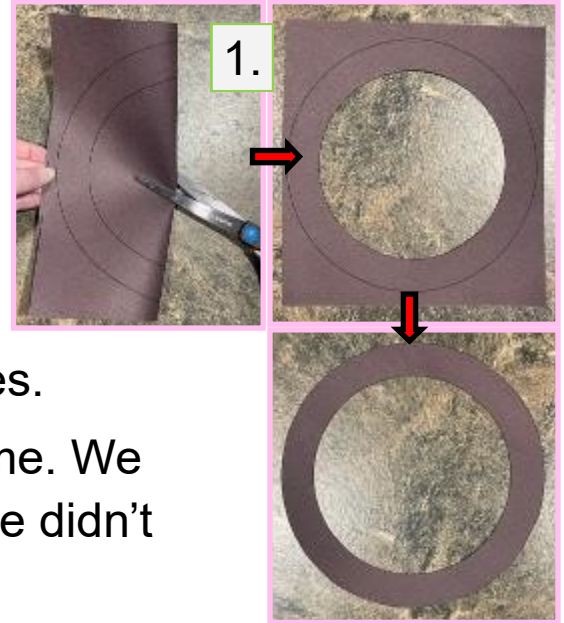


Flowering Tree Circle Directions

Materials: construction paper templates (3), tissue paper, string, scissors, glue stick, hole punch.

Directions:

1. Cut out circle frame. Start with inside. It's easier to slightly fold paper to make a cut in center and then cut the inside. Next, cut outside of circle.
2. Cut out the brown tree and green leaves.
3. Glue the edges of tree to the circle frame. We flipped our tree over so the black outline didn't show.
4. Glue leaves onto tree as you like.

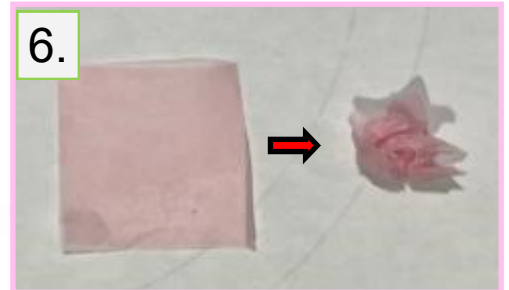
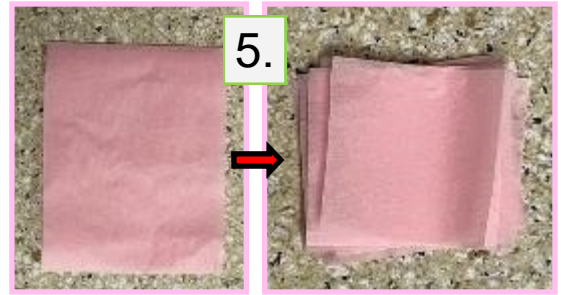


OVER →



PLEASE LEAVE DIRECTIONS ON TABLE ~ THANKS, WH NATURE CENTER

5. Take tissue paper piece and cut into approximately 9 equal squares.
6. Take each small square and slightly crumpled to make a flower.
7. Glue flowers onto tree as you like.
8. Punch a hole in the top of the circle frame. String the string through hole and tie off.
9. Take your Flowering Tree Circle Decoration and hang up at home to celebrate Spring!



OVER 

PLEASE LEAVE DIRECTIONS ON TABLE ~ THANKS, WH NATURE CENTER

