

Make A Beaded Nature Friendship Pin



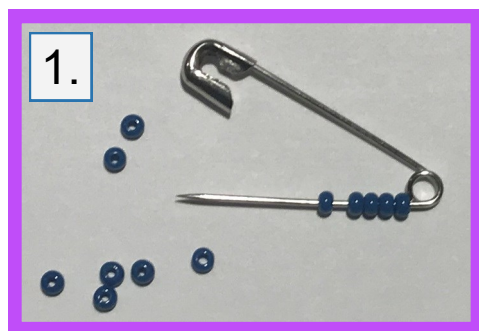
Beaded Nature Friendship Pins Directions

Directions:

1. Using the pattern as a guide, put the beads on the smaller safety pins. The coiled end is the bottom of pattern.

*****Tip:** As you finish putting beads on the pins make sure you keep the pins in order. This will make it easier when you hang the beaded pins on the large safety pin.

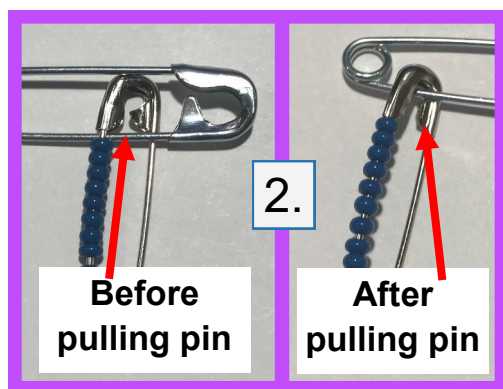
*****Optional:** Use pliers to pinch the top of pin closed so it doesn't accidentally open later.



2. Once you have all the beads on all the pins, open the large pin and slip the beaded pins over the opening. Close the large pin and pull down on the beaded pins until they snap into place.



*****Tip:** Ask the nature center staff for assistance. We are here to help so don't be afraid to ask!



3. You are all done with your beaded friendship pin! Where will you show off your totally tubular craft?



